


Anti-ATL3 antibody ab117819

★★★★★ [1 Abreviews](#) [1 References](#) [画像数 2](#)

製品の概要

| | |
|--------------|---|
| 製品名 | Anti-ATL3 antibody |
| 製品の詳細 | Rabbit polyclonal to ATL3 |
| 由来種 | Rabbit |
| アプリケーション | 適用あり: WB, IP |
| 種交差性 | 交差種: Mouse, Human 交差が予測される動物種: Rat, Rabbit, Guinea pig, Dog, Chimpanzee, Rhesus monkey, Gorilla, Chinese hamster, Orangutan  |
| 免疫原 | Synthetic peptide, corresponding to a region within amino acids 350-400 of Human ATL3 according to NP_056274.3. |
| ポジティブ・コントロール | Whole cell lysate from HeLa, Jurkat, 293T and mouse NIH3T3 cells. |
| 特記事項 | <p>The Life Science industry has been in the grips of a reproducibility crisis for a number of years. Abcam is leading the way in addressing this with our range of recombinant monoclonal antibodies and knockout edited cell lines for gold-standard validation. Please check that this product meets your needs before purchasing.</p> <p>If you have any questions, special requirements or concerns, please send us an inquiry and/or contact our Support team ahead of purchase. Recommended alternatives for this product can be found below, along with publications, customer reviews and Q&As</p> |

製品の特性

| | |
|--------|---|
| 製品の状態 | Liquid |
| 保存方法 | Shipped at 4°C. Upon delivery aliquot and store at -20°C. Avoid freeze / thaw cycles. |
| バッファー | pH: 6.8 Preservative: 0.09% Sodium azide Constituents: 0.1% BSA, 99% Tris buffered saline |
| 精製度 | Immunogen affinity purified |
| ポリ/モノ | ポリクローナル |
| アイソタイプ | IgG |

アプリケーション

The Abpromise guarantee

Abpromise保証は、次のテスト済みアプリケーションにおけるab117819の使用に適用されます

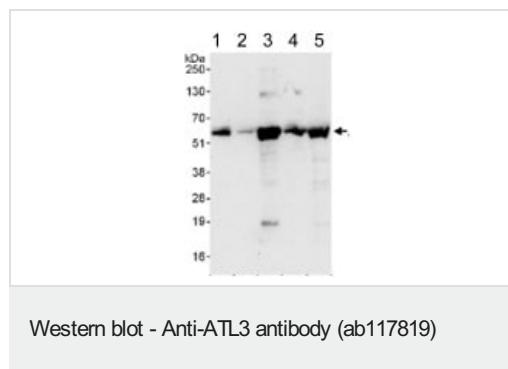
アプリケーションノートには、推奨の開始希釈率がありますが、適切な希釈率につきましてはご検討ください。

| アプリケーション | Abreviews | 特記事項 |
|----------|-----------|---|
| WB | ★★★★★ (1) | 1/2000 - 1/10000. Predicted molecular weight: 61 kDa. |
| IP | | Use at 2-10 µg/mg of lysate. |

ターゲット情報

| | |
|-------|--|
| 機能 | GTPase tethering membranes through formation of trans-homooligomer and mediating homotypic fusion of endoplasmic reticulum membranes. Functions in endoplasmic reticulum tubular network biogenesis. |
| 組織特異性 | Expressed in peripheral tissues (at protein level). |
| 配列類似性 | Belongs to the GBP family. Atlastin subfamily. |
| 細胞内局在 | Endoplasmic reticulum membrane. |

画像



All lanes : Anti-ATL3 antibody (ab117819) at 0.04 µg/ml

Lane 1 : HeLa whole cell lysate at 50 µg

Lane 2 : HeLa whole cell lysate at 15 µg

Lane 3 : Jurkat whole cell lysate at 50 µg

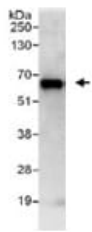
Lane 4 : 293T whole cell lysate at 50 µg

Lane 5 : NIH3T3 whole cell lysate at 50 µg

Developed using the ECL technique.

Predicted band size: 61 kDa

Exposure time: 30 seconds



Immunoprecipitation - Anti-ATL3 antibody
(ab117819)

Detection of Human ATL3 by Western Blot of Immunoprecipitation. ab117819 at 1 µg/ml staining ATL3 in HeLa whole cell lysate immunoprecipitated using ab117819 at 6 µg/mg lysate (1 mg/IP; 20% of IP loaded/lane). Detection: Chemiluminescence with exposure time of 10 seconds.

Please note: All products are "FOR RESEARCH USE ONLY. NOT FOR USE IN DIAGNOSTIC PROCEDURES"

Our Abpromise to you: Quality guaranteed and expert technical support

- Replacement or refund for products not performing as stated on the datasheet
- Valid for 12 months from date of delivery
- Response to your inquiry within 24 hours
- We provide support in Chinese, English, French, German, Japanese and Spanish
- Extensive multi-media technical resources to help you
- We investigate all quality concerns to ensure our products perform to the highest standards

If the product does not perform as described on this datasheet, we will offer a refund or replacement. For full details of the Abpromise, please visit <https://www.abcam.co.jp/abpromise> or contact our technical team.

Terms and conditions

- Guarantee only valid for products bought direct from Abcam or one of our authorized distributors