


Anti-ATG4B antibody ab223364

画像数 2

製品の概要

製品名	Anti-ATG4B antibody
製品の詳細	Rabbit polyclonal to ATG4B
由来種	Rabbit
アプリケーション	適用あり: ICC/IF, WB
種交差性	交差種: Mouse, Human 交差が予測される動物種: Cow 
免疫原	Synthetic peptide corresponding to Human ATG4B aa 50-150. Database link: Q9Y4P1 <div>  Run BLAST with  Run BLAST with </div>
ポジティブ・コントロール	WB: Mouse brain cell lysate. ICC/IF: SK-N-BE cells.
特記事項	<p>The Life Science industry has been in the grips of a reproducibility crisis for a number of years. Abcam is leading the way in addressing this with our range of recombinant monoclonal antibodies and knockout edited cell lines for gold-standard validation. Please check that this product meets your needs before purchasing.</p> <p>If you have any questions, special requirements or concerns, please send us an inquiry and/or contact our Support team ahead of purchase. Recommended alternatives for this product can be found below, along with publications, customer reviews and Q&As</p>

製品の特性

製品の状態	Liquid
保存方法	Shipped at 4°C. Store at +4°C short term (1-2 weeks). Upon delivery aliquot. Store at -20°C long term. Avoid freeze / thaw cycle.
バッファー	Preservative: 0.09% Sodium azide Constituents: 50% Glycerol (glycerin, glycerine), PBS
精製度	Immunogen affinity purified
ポリ/モノ	ポリクローナル
アイソタイプ	IgG

アプリケーション

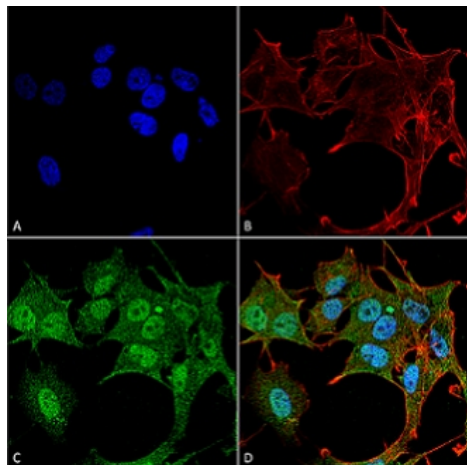
The Abpromise guarantee Abpromise保証は、 次のテスト済みアプリケーションにおけるab223364の使用に適用されます
 アプリケーションノートには、推奨の開始希釈率がありますが、適切な希釈率につきましてはご検討ください。

アプリケーション	Abreviews	特記事項
ICC/IF		1/100.
WB		1/1000.

ターゲット情報

機能	Cysteine protease required for autophagy, which cleaves the C-terminal part of either MAP1LC3, GABARAPL2 or GABARAP, allowing the liberation of form I. A subpopulation of form I is subsequently converted to a smaller form (form II). Form II, with a revealed C-terminal glycine, is considered to be the phosphatidylethanolamine (PE)-conjugated form, and has the capacity for the binding to autophagosomes.
組織特異性	Mainly expressed in the skeletal muscle, followed by brain, heart, liver and pancreas.
配列類似性	Belongs to the peptidase C54 family.
細胞内局在	Cytoplasm.

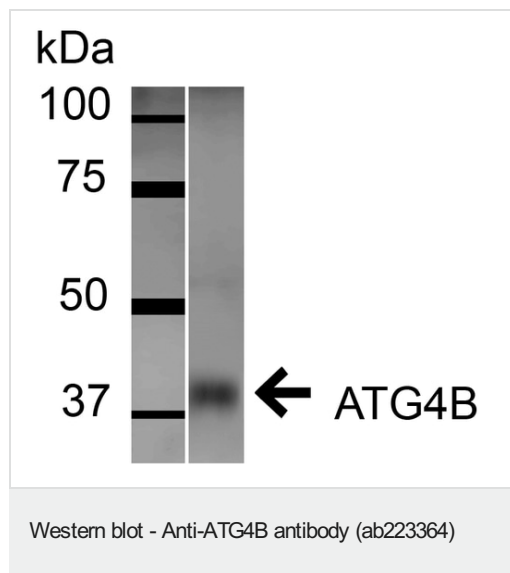
画像



4% formaldehyde-fixed SK-N-BE (human) cells stained for ATG4B (green) using ab223364 at 1/100 dilution in ICC/IF. Counterstain: Phalloidin Texas Red F-Actin stain; DAPI (blue) nuclear stain at 1/1000, 1/5000 for 60 minutes RT, 5 minutes RT.

(A) DAPI nuclear stain (B) Phalloidin Texas Red F-Actin stain (C) ab223364 (D) Merge.

Immunocytochemistry/ Immunofluorescence - Anti-ATG4B antibody (ab223364)



Anti-ATG4B antibody (ab223364) at 1/1000 dilution + Mouse brain cell lysate at 15 µg

Secondary

Goat Anti-Rabbit HRP at 1/2000 dilution

Developed using the ECL technique.

Observed band size: 40 kDa

Exposure time: 6 minutes

Blocking buffer: 5% skimmed milk in TBST.

Primary and secondary antibodies were incubated for 1 hour at RT.

Please note: All products are "FOR RESEARCH USE ONLY. NOT FOR USE IN DIAGNOSTIC PROCEDURES"

Our Abpromise to you: Quality guaranteed and expert technical support

- Replacement or refund for products not performing as stated on the datasheet
- Valid for 12 months from date of delivery
- Response to your inquiry within 24 hours
- We provide support in Chinese, English, French, German, Japanese and Spanish
- Extensive multi-media technical resources to help you
- We investigate all quality concerns to ensure our products perform to the highest standards

If the product does not perform as described on this datasheet, we will offer a refund or replacement. For full details of the Abpromise, please visit <https://www.abcam.co.jp/abpromise> or contact our technical team.

Terms and conditions

- Guarantee only valid for products bought direct from Abcam or one of our authorized distributors