


Anti-ATG16L1 antibody ab227714

画像数 5

製品の概要

製品名	Anti-ATG16L1 antibody
製品の詳細	Rabbit polyclonal to ATG16L1
由来種	Rabbit
アプリケーション	適用あり: WB, IHC-P, ICC/IF
種交差性	交差種: Mouse, Human 交差が予測される動物種: Rat, Cow, Pig 
免疫原	Recombinant fragment within Human ATG16L1 (internal sequence). The exact sequence is proprietary. Database link: Q676U5
ポジティブ・コントロール	WB: HEK-293T, A431 and HeLa whole cell lysates. IHC-P: Human ovarian carcinoma and colon carcinoma tissue; mouse liver tissue. ICC/IF: HeLa cells.
特記事項	<p>The Life Science industry has been in the grips of a reproducibility crisis for a number of years. Abcam is leading the way in addressing this with our range of recombinant monoclonal antibodies and knockout edited cell lines for gold-standard validation. Please check that this product meets your needs before purchasing.</p> <p>If you have any questions, special requirements or concerns, please send us an inquiry and/or contact our Support team ahead of purchase. Recommended alternatives for this product can be found below, along with publications, customer reviews and Q&As</p>

製品の特性

製品の状態	Liquid
保存方法	Shipped at 4°C. Store at +4°C short term (1-2 weeks). Upon delivery aliquot. Store at -20°C long term. Avoid freeze / thaw cycle.
バッファー	pH: 7.00 Preservative: 0.025% Proclin 300 Constituents: 79% PBS, 20% Glycerol (glycerin, glycerine)
精製度	Immunogen affinity purified
ポリ/モノ	ポリクローナル
アイソタイプ	IgG

アプリケーション

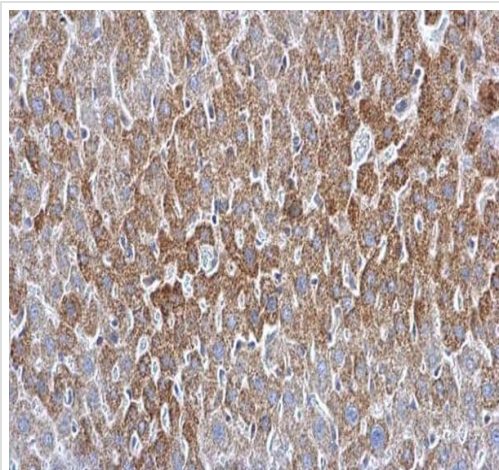
The Abpromise guarantee **Abpromise保証は、次のテスト済みアプリケーションにおけるab227714の使用に適用されず**
アプリケーションノートには、推奨の開始希釈率がありますが、適切な希釈率につきましてはご検討ください。

アプリケーション	Abreviews	特記事項
WB		1/500 - 1/3000. Predicted molecular weight: 68 kDa.
IHC-P		1/100 - 1/1000.
ICC/IF		1/100 - 1/1000.

ターゲット情報

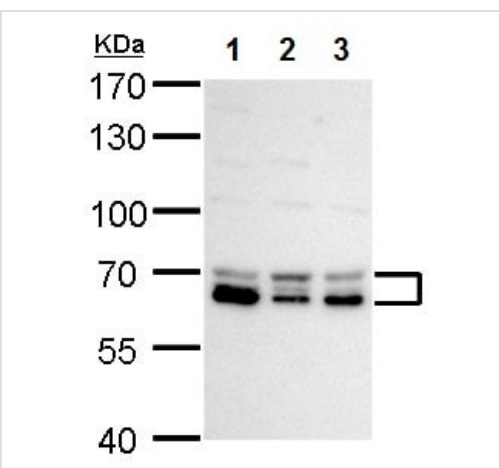
機能	Plays an essential role in autophagy: interacts with ATG12-ATG5 to mediate the conjugation of phosphatidylethanolamine (PE) to LC3 (MAP1LC3A, MAP1LC3B or MAP1LC3C), to produce a membrane-bound activated form of LC3 named LC3-II. Thereby, controls the elongation of the nascent autophagosomal membrane.
関連疾患	Inflammatory bowel disease 10
配列類似性	Belongs to the WD repeat ATG16 family. Contains 7 WD repeats.
翻訳後修飾	Proteolytic cleavage by activated CASP3 leads to degradation and may regulate autophagy upon cellular stress and apoptotic stimuli.
細胞内局在	Cytoplasm. Preautophagosomal structure membrane. Recruited to omegasomes membranes by WIPI2. Omegasomes are endoplasmic reticulum connected structures at the origin of preautophagosomal structures. Localized to preautophagosomal structure (PAS) where it is involved in the membrane targeting of ATG5. Localizes also to discrete punctae along the ciliary axoneme.
製品の状態	There are 4 isoforms produced by alternative splicing.

画像



Immunohistochemistry (Formalin/PFA-fixed paraffin-embedded sections) - Anti-ATG16L1 antibody (ab227714)

Paraffin-embedded mouse liver tissue stained for ATG16L1 using ab227714 at 1/500 dilution in immunohistochemical analysis.



Western blot - Anti-ATG16L1 antibody (ab227714)

All lanes : Anti-ATG16L1 antibody (ab227714) at 1/2000 dilution

Lane 1 : HEK-293T (human epithelial cell line from embryonic kidney transformed with large T antigen) whole cell lysate

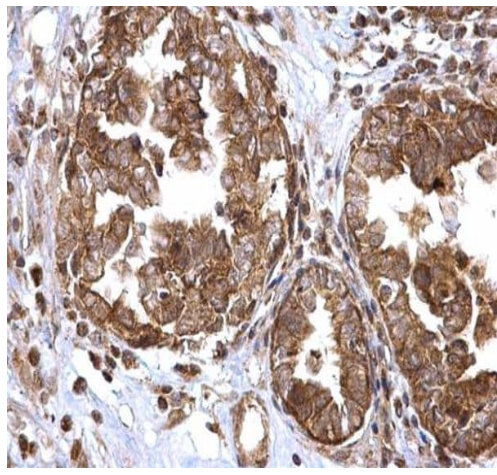
Lane 2 : A431 (human epidermoid carcinoma cell line) whole cell lysate

Lane 3 : HeLa (human epithelial cell line from cervix adenocarcinoma) whole cell lysate

Lysates/proteins at 30 µg per lane.

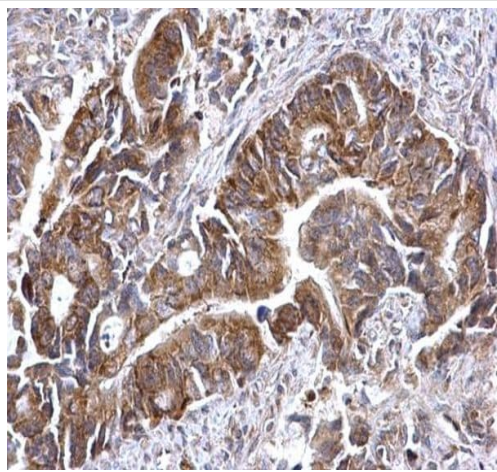
Predicted band size: 68 kDa

7.5% SDS-PAGE gel.



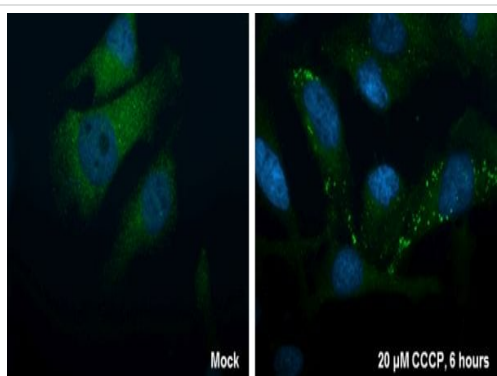
Immunohistochemistry (Formalin/PFA-fixed paraffin-embedded sections) - Anti-ATG16L1 antibody (ab227714)

Paraffin-embedded human ovarian carcinoma tissue stained for ATG16L1 using ab227714 at 1/500 dilution in immunohistochemical analysis.



Immunohistochemistry (Formalin/PFA-fixed paraffin-embedded sections) - Anti-ATG16L1 antibody (ab227714)

Paraffin-embedded human colon carcinoma tissue stained for ATG16L1 using ab227714 at 1/500 dilution in immunohistochemical analysis.



Immunocytochemistry/ Immunofluorescence - Anti-ATG16L1 antibody (ab227714)

Ice-cold methanol-fixed HeLa (human epithelial cell line from cervix adenocarcinoma) cells untreated (left panel) and treated with 20 μ M CCCP (right panel) stained for ATG16L1 (green) using ab227714 at 1/200 dilution in ICC/IF.

Nuclear counterstain: Hoechst 33342 (blue).

Please note: All products are "FOR RESEARCH USE ONLY. NOT FOR USE IN DIAGNOSTIC PROCEDURES"

Our Abpromise to you: Quality guaranteed and expert technical support

- Replacement or refund for products not performing as stated on the datasheet
- Valid for 12 months from date of delivery
- Response to your inquiry within 24 hours

- We provide support in Chinese, English, French, German, Japanese and Spanish
- Extensive multi-media technical resources to help you
- We investigate all quality concerns to ensure our products perform to the highest standards

If the product does not perform as described on this datasheet, we will offer a refund or replacement. For full details of the Abpromise, please visit <https://www.abcam.co.jp/abpromise> or contact our technical team.

Terms and conditions

- Guarantee only valid for products bought direct from Abcam or one of our authorized distributors