

# Anti-ATG12 antibody ab155589

**27 References**   **画像数 6**

### 製品の概要

製品名	Anti-ATG12 antibody
製品の詳細	Rabbit polyclonal to ATG12
由来種	Rabbit
特異性	ab155589 detects free ATG12 and ATG12 conjugated to Atg5.
アプリケーション	<b>適用あり:</b> WB, IHC-P, ICC/IF
種交差性	<b>交差種:</b> Mouse, Rat, Human
免疫原	Recombinant fragment within Human ATG12 aa 1-187. The exact sequence is proprietary.
ポジティブ・コントロール	293T, A431, NIH3T3 and Rat brain whole cell lysates; Human U87 xenograft tissue; HeLa cells untreated or treated with Tunicamycin.
特記事項	<p>The Life Science industry has been in the grips of a reproducibility crisis for a number of years. Abcam is leading the way in addressing this with our range of recombinant monoclonal antibodies and knockout edited cell lines for gold-standard validation. Please check that this product meets your needs before purchasing.</p> <p>If you have any questions, special requirements or concerns, please send us an inquiry and/or contact our Support team ahead of purchase. Recommended alternatives for this product can be found below, along with publications, customer reviews and Q&amp;As</p>

### 製品の特性

製品の状態	Liquid
保存方法	Shipped at 4°C. Upon delivery aliquot. Store at -20°C or -80°C. Avoid freeze / thaw cycle.
バッファー	<p>pH: 7.00</p> <p>Preservative: 0.025% Proclin 300</p> <p>Constituents: 79% PBS, 20% Glycerol (glycerin, glycerine)</p>
精製度	Immunogen affinity purified
ポリ/モノ	ポリクローナル
アイソタイプ	IgG

### アプリケーション

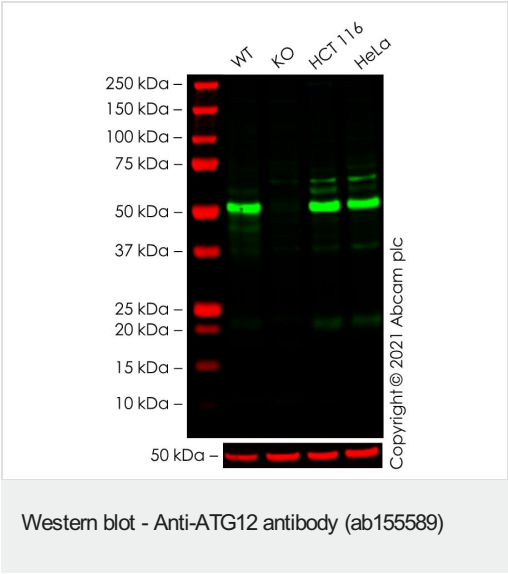
**The Abpromise guarantee**      Abpromise保証は、 次のテスト済みアプリケーションにおけるab155589の使用に適用されます  
アプリケーションノートには、推奨の開始希釈率がありますが、適切な希釈率につきましてはご確認ください。

アプリケーション	Abreviews	特記事項
WB		1/500 - 1/3000. Predicted molecular weight: 15 kDa.
IHC-P		1/100 - 1/1000.
ICC/IF		1/100 - 1/1000.

ターゲット情報

機能	Ubiquitin-like protein required for autophagy. Conjugated to ATG3 and ATG5.
組織特異性	Ubiquitous.
配列類似性	Belongs to the ATG12 family.
ドメイン	Shares weak sequence similarity with ubiquitin family, but contains an 'ubiquitin superfold' and the C-terminal Gly is required for isopeptide linkage.
細胞内局在	Cytoplasm.

画像



**All lanes :** Anti-ATG12 antibody (ab155589) at 1/500 dilution

- Lane 1 :** Wild-type THP-1 cell lysate
- Lane 2 :** ATG12 knockout THP-1 cell lysate
- Lane 3 :** HCT 116 cell lysate
- Lane 4 :** HeLa cell lysate

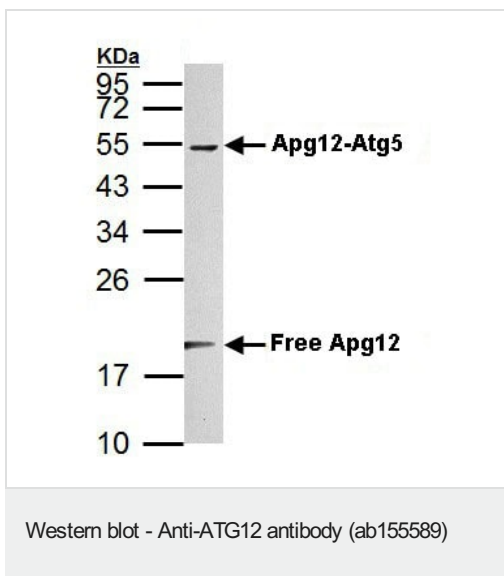
Lysates/proteins at 20 µg per lane.

Performed under reducing conditions.

**Predicted band size:** 15 kDa  
**Observed band size:** 52 kDa

False colour image of Western blot: Anti-ATG12 antibody staining at 1/500 dilution, shown in green; Mouse anti-Alpha Tubulin [DM1A] (**ab7291**) loading control staining at 1/20000 dilution, shown in red. In Western blot, ab155589 was shown to bind specifically to ATG12. A band likely to be the unfunctional complex with ATG5 was observed at 52 kDa in wild-type THP-1 cell lysates with no signal

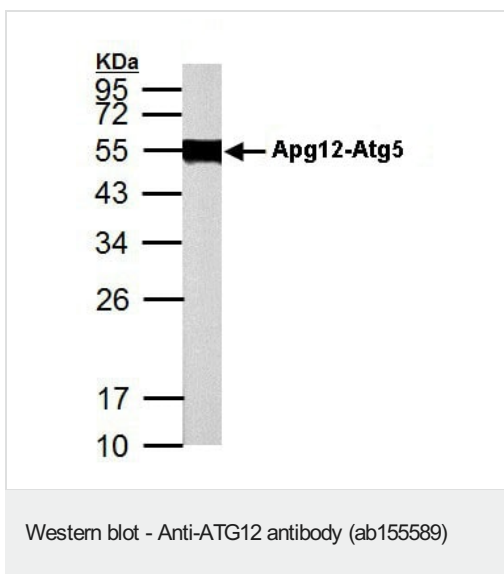
observed at this size in Atg12 knockout cell line **ab277831** (knockout cell lysate **ab278183**) - unconjugated functional form not observed at 15 kDa. To generate this image, wild-type and Atg12 knockout THP-1 cell lysates were analysed. First, samples were run on an SDS-PAGE gel then transferred onto a nitrocellulose membrane. Membranes were blocked in 3% milk in TBS-0.1 % Tween® 20 (TBS-T) before incubation with primary antibodies overnight at 4°C. Blots were washed four times in TBS-T, incubated with secondary antibodies for 1 h at room temperature, washed again four times then imaged. Secondary antibodies used were Goat anti-Rabbit IgG H&L (IRDye® 800CW) preabsorbed (**ab216773**) and Goat anti-Mouse IgG H&L (IRDye® 680RD) preabsorbed (**ab216776**) at 1/20000 dilution.



Anti-ATG12 antibody (ab155589) at 1/1000 dilution + NIH3T3 whole cell lysate at 30 µg

**Predicted band size:** 15 kDa

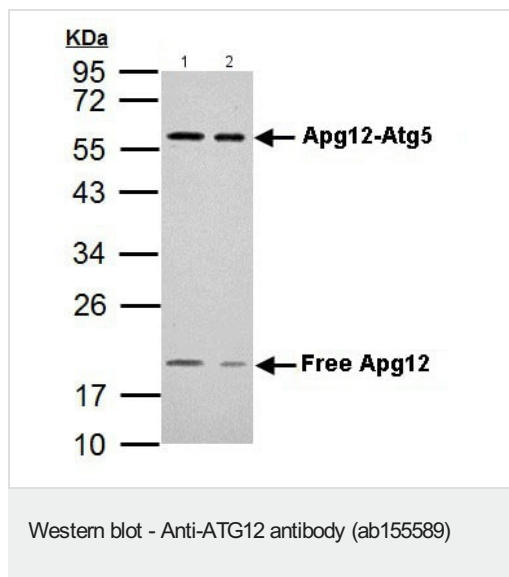
12% SDS PAGE



Anti-ATG12 antibody (ab155589) at 1/1000 dilution + Rat brain whole cell lysate at 50 µg

**Predicted band size:** 15 kDa

12% SDS PAGE



**All lanes :** Anti-ATG12 antibody (ab155589) at 1/1000 dilution

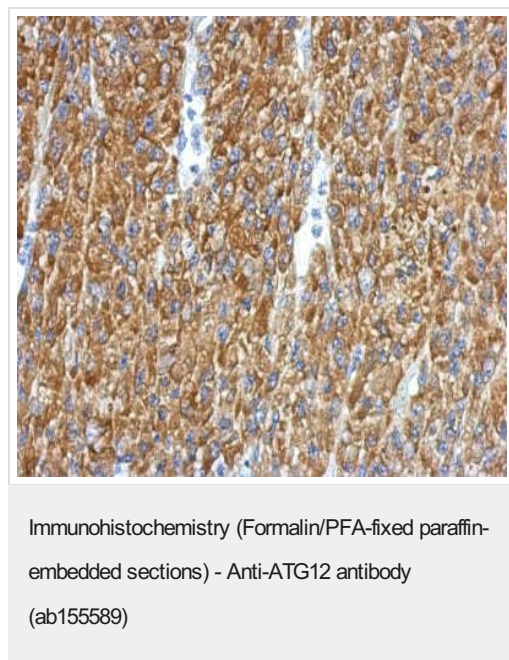
**Lane 1 :** 293T whole cell lysate

**Lane 2 :** A431 whole cell lysate

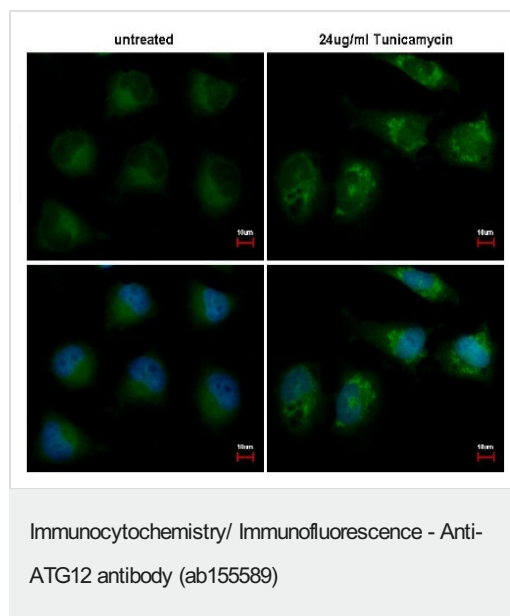
Lysates/proteins at 30 µg per lane.

**Predicted band size:** 15 kDa

12% SDS PAGE



Immunohistochemical analysis of paraffin-embedded U87 (human) xenograft tissue labeling ATG12 with ab155589 at 1/500 dilution.



Immunofluorescent analysis of paraformaldehyde-fixed HeLa cells labeling ATG12 with ab155589 at 1/500 dilution. Lower panels co-stained with Hoechst 33342.

Cells were fixed in 4% paraformaldehyde for 15 minutes.

**Please note:** All products are "FOR RESEARCH USE ONLY. NOT FOR USE IN DIAGNOSTIC PROCEDURES"

### Our Abpromise to you: Quality guaranteed and expert technical support

- Replacement or refund for products not performing as stated on the datasheet
- Valid for 12 months from date of delivery
- Response to your inquiry within 24 hours
- We provide support in Chinese, English, French, German, Japanese and Spanish
- Extensive multi-media technical resources to help you
- We investigate all quality concerns to ensure our products perform to the highest standards

If the product does not perform as described on this datasheet, we will offer a refund or replacement. For full details of the Abpromise, please visit <https://www.abcam.co.jp/abpromise> or contact our technical team.

### Terms and conditions

- Guarantee only valid for products bought direct from Abcam or one of our authorized distributors