

### Anti-ATG10 antibody [EPR4804] ab124711

KO 評価済 リコンビナント RabMAb

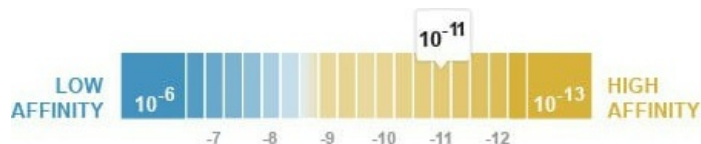
14 References 画像数 4

#### 製品の概要

製品名	Anti-ATG10 antibody [EPR4804]
製品の詳細	Rabbit monoclonal [EPR4804] to ATG10
由来種	Rabbit
アプリケーション	<b>適用あり:</b> WB <b>適用なし:</b> Flow Cyt, ICC/IF or IHC-P
種交差性	<b>交差種:</b> Human
免疫原	Synthetic peptide corresponding to Human ATG10 aa 200-300 (C terminal). Database link: <a href="#">Q9H0Y0</a>
ポジティブ・コントロール	WB: HeLa, K562, and 293T cell lysates.
特記事項	This product is a recombinant monoclonal antibody, which offers several advantages including: <ul style="list-style-type: none"> <li>- High batch-to-batch consistency and reproducibility</li> <li>- Improved sensitivity and specificity</li> <li>- Long-term security of supply</li> <li>- Animal-free production</li> </ul> For more information <a href="#">see here</a> . Our RabMAb <sup>®</sup> technology is a patented hybridoma-based technology for making rabbit monoclonal antibodies. For details on our patents, please refer to <a href="#">RabMAb<sup>®</sup> patents</a> . Mouse, Rat: We have preliminary internal testing data to indicate this antibody may not react with these species. Please contact us for more information.

#### 製品の特性

製品の状態	Liquid
保存方法	Shipped at 4°C. Store at -20°C. Stable for 12 months at -20°C.
解離定数 (K <sub>D</sub> 値)	K <sub>D</sub> = 9.20 x 10 <sup>-11</sup> M



[Learn more about K<sub>D</sub>](#)

バッファー	pH: 7.20 Preservative: 0.05% Sodium azide Constituents: 40% Glycerol (glycerin, glycerine), 9.85% Tris glycine, 50% Tissue culture supernatant
精製度	Protein A purified
ポリ/モノ	モノクローナル
クローン名	EPR4804
アイソタイプ	IgG

アプリケーション

**The Abpromise guarantee** [Abpromise保証](#)は、次のテスト済みアプリケーションにおけるab124711の使用に適用されます  
アプリケーションノートには、推奨の開始希釈率がありますが、適切な希釈率につきましてはご検討ください。

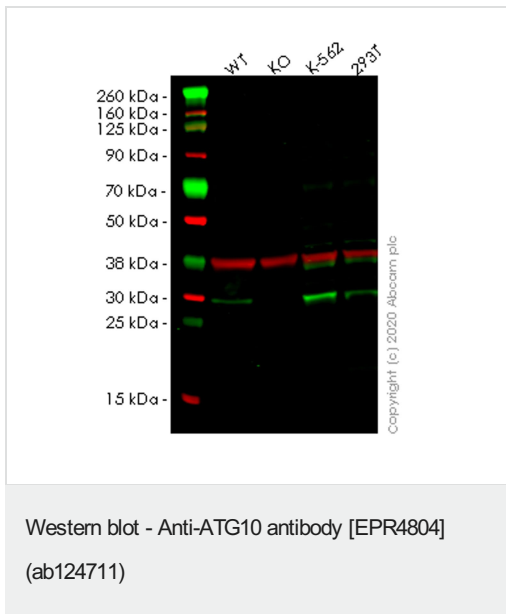
アプリケーション	Abreviews	特記事項
WB		1/1000 - 1/10000. Predicted molecular weight: 25 kDa.

**追加情報** Is unsuitable for Flow Cyt, ICC/IF or IHC-P.

ターゲット情報

機能	E2-like enzyme involved in autophagy. Acts as an E2-like enzyme that catalyzes the conjugation of ATG12 to ATG5. ATG12 conjugation to ATG5 is required for autophagy. Likely serves as an ATG5-recognition molecule. Not involved in ATG12 conjugation to ATG3 (By similarity). Plays a role in adenovirus-mediated cell lysis.
配列類似性	Belongs to the ATG10 family.
細胞内局在	Cytoplasm.

画像



**All lanes** : Anti-ATG10 antibody [EPR4804] (ab124711) at 1/1000 dilution

**Lane 1** : Wild-type HeLa (Human epithelial cell line from cervix adenocarcinoma) whole cell lysate

**Lane 2** : ATG10 knockout HeLa (Human epithelial cell line from cervix adenocarcinoma) whole cell lysate

**Lane 3** : K562 (Human chronic myelogenous leukemia lymphoblast cell line) whole cell lysate

**Lane 4** : HEK-293T (Human epithelial cell line from embryonic kidney transformed with large T antigen) whole cell lysate

Lysates/proteins at 20 µg per lane.

### Secondary

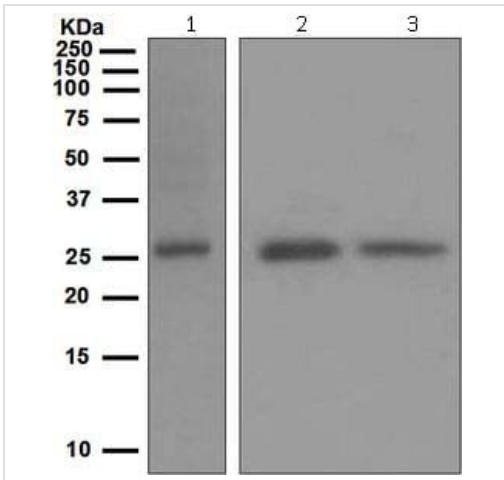
**All lanes** : Goat anti-Rabbit IgG H&L (IRDye® 800CW) preadsorbed (**ab216773**) at 1/10000 dilution

**Predicted band size:** 25 kDa

**Observed band size:** 28 kDa

**Lanes 1-4:** Merged signal (red and green). Green - ab124711 observed at 28 kDa. Red - loading control **ab8245** observed at 36 kDa.

ab124711 Anti-ATG10 antibody [EPR4804] was shown to specifically react with ATG10 in wild-type HeLa cells. Loss of signal was observed when knockout cell line **ab265682** (knockout cell lysate **ab258786**) was used. Wild-type and ATG10 knockout samples were subjected to SDS-PAGE. ab124711 and Anti-GAPDH antibody [6C5] - Loading Control (**ab8245**) were incubated overnight at 4°C at 1 in 1000 dilution and 1 in 20000 dilution respectively. Blots were developed with Goat anti-Rabbit IgG H&L (IRDye® 800CW) preadsorbed (**ab216773**) and Goat anti-Mouse IgG H&L (IRDye® 680RD) preadsorbed (**ab216776**) secondary antibodies at 1 in 20000 dilution for 1 hour at room temperature before imaging.



Western blot - Anti-ATG10 antibody [EPR4804]  
(ab124711)

**All lanes** : Anti-ATG10 antibody [EPR4804] (ab124711) at 1/1000 dilution

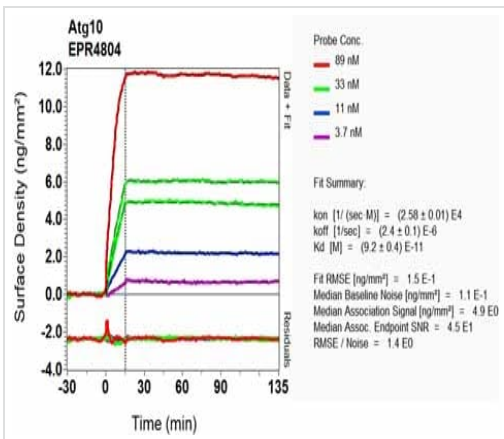
**Lane 1** : HeLa cell lysates

**Lane 2** : K562 cell lysates

**Lane 3** : 293T cell lysates

Lysates/proteins at 10 µg per lane.

**Predicted band size:** 25 kDa







O1-RD Scanning - Anti-ATG10 antibody [EPR4804]  
(ab124711)

Equilibrium dissociation constant ( $K_D$ )

Learn more about  $K_D$

[Click here to learn more about  \$K\_D\$](#)

Why choose a recombinant antibody?

 <p><b>Research with confidence</b> Consistent and reproducible results</p>	 <p><b>Long-term and scalable supply</b> Recombinant technology</p>
 <p><b>Success from the first experiment</b> Confirmed specificity</p>	 <p><b>Ethical standards compliant</b> Animal-free production</p>

Anti-ATG10 antibody [EPR4804] (ab124711)

**Please note:** All products are "FOR RESEARCH USE ONLY. NOT FOR USE IN DIAGNOSTIC PROCEDURES"

### Our Abpromise to you: Quality guaranteed and expert technical support

---

- Replacement or refund for products not performing as stated on the datasheet
- Valid for 12 months from date of delivery
- Response to your inquiry within 24 hours
- We provide support in Chinese, English, French, German, Japanese and Spanish
- Extensive multi-media technical resources to help you
- We investigate all quality concerns to ensure our products perform to the highest standards

If the product does not perform as described on this datasheet, we will offer a refund or replacement. For full details of the Abpromise, please visit <https://www.abcam.co.jp/abpromise> or contact our technical team.

### Terms and conditions

---

- Guarantee only valid for products bought direct from Abcam or one of our authorized distributors