

### Anti-ATF6 antibody ab37149

★★★★★ [6 Abreviews](#) [87 References](#) [画像数 4](#)

#### 製品の概要

製品名	Anti-ATF6 antibody
製品の詳細	Rabbit polyclonal to ATF6
由来種	Rabbit
特異性	Based on 100% sequence alignment, this antibody detects ATF6 isoform A (alpha). The antibody is predicted to recognize the 50kDa fragment as it recognizes a peptide sequence from near the amino terminus. We have not tested stressed cells to see if the 50kDa cleavage product can be detected.
アプリケーション	<b>適用あり:</b> WB, IHC-P <b>適用なし:</b> ICC
種交差性	<b>交差種:</b> Mouse, Rat, Human
免疫原	Synthetic peptide corresponding to Human ATF6 (N terminal). 17 a.a. immunogen somewhere between a.a. 25-75
ポジティブ・コントロール	WB: Human breast cell lysate. Mouse heart and skeletal lysates. Rat kidney lysate. IHC-P: Mouse and rat brain tissue.
特記事項	<p>The Life Science industry has been in the grips of a reproducibility crisis for a number of years. Abcam is leading the way in addressing this with our range of recombinant monoclonal antibodies and knockout edited cell lines for gold-standard validation. Please check that this product meets your needs before purchasing.</p> <p>If you have any questions, special requirements or concerns, please send us an inquiry and/or contact our Support team ahead of purchase. Recommended alternatives for this product can be found below, along with publications, customer reviews and Q&amp;As</p>

#### 製品の特性

製品の状態	Liquid
保存方法	Shipped at 4°C. Store at +4°C short term (1-2 weeks). Upon delivery aliquot. Store at -20°C long term. Avoid freeze / thaw cycle.
バッファー	pH: 7.2 Preservative: 0.02% Sodium azide Constituent: 99% PBS
精製度	Immunogen affinity purified

特記事項(精製)	Immunoaffinity purified
ポリ/モノ	ポリクローナル
アイソタイプ	IgG

## アプリケーション

**The Abpromise guarantee** **Abpromise保証は、次のテスト済みアプリケーションにおけるab37149の使用に適用されます**  
 アプリケーションノートには、推奨の開始希釈率がありますが、適切な希釈率につきましてはご確認ください。

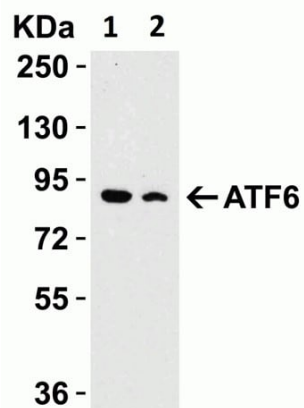
アプリケーション	Abreviews	特記事項
WB	★★★★★ (2)	Use a concentration of 0.5 - 1 µg/ml. Detects a band of approximately 85 kDa (predicted molecular weight: 75 kDa).
IHC-P		Use a concentration of 5 µg/ml.

**追加情報** Is unsuitable for ICC.

## ターゲット情報

<b>機能</b>	Transcription factor that acts during endoplasmic reticulum stress by activating unfolded protein response target genes. Binds DNA on the 5'-CCAC[GA]-3' half of the ER stress response element (ERSE) (5'-CCAAT-N(9)-CCAC[GA]-3') and of ERSE II (5'-ATTGG-N-CCACG-3'). Binding to ERSE requires binding of NF-Y to ERSE. Could also be involved in activation of transcription by the serum response factor.
<b>組織特異性</b>	Ubiquitous.
<b>配列類似性</b>	Belongs to the bZIP family. ATF subfamily. Contains 1 bZIP domain.
<b>ドメイン</b>	The basic domain functions as a nuclear localization signal. The basic leucine-zipper domain is sufficient for association with the NF-Y trimer and binding to ERSE.
<b>翻訳後修飾</b>	During unfolded protein response an approximative 50 kDa fragment containing the cytoplasmic transcription factor domain is released by proteolysis. The cleavage seems to be performed sequentially by site-1 and site-2 proteases. N-glycosylated. The glycosylation status may serve as a sensor for ER homeostasis, resulting in ATF6 activation to trigger the unfolded protein response (UPR). Phosphorylated in vitro by MAPK14/P38MAPK.
<b>細胞内局在</b>	Endoplasmic reticulum membrane and Nucleus. Under ER stress the cleaved N-terminal cytoplasmic domain translocates into the nucleus.

## 画像



Western blot - Anti-ATF6 antibody (ab37149)

**All lanes :** Anti-ATF6 antibody (ab37149) at 1 µg/ml

**Lane 1 :** Mouse Heart Lysate

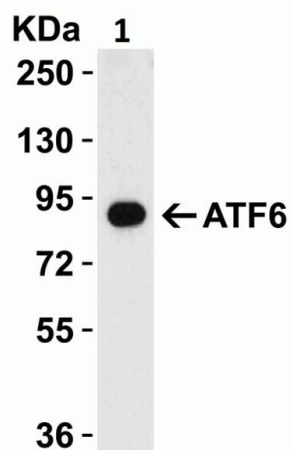
**Lane 2 :** Mouse Skeletal Muscle Lysate

Lysates/proteins at 15 µg per lane.

**Secondary**

**All lanes :** Goat Anti-Rabbit IgG HRP Conjugate at 1/10000 dilution

**Predicted band size:** 75 kDa



Western blot - Anti-ATF6 antibody (ab37149)

**Blocking buffer:** 5% NFDM/TBST.

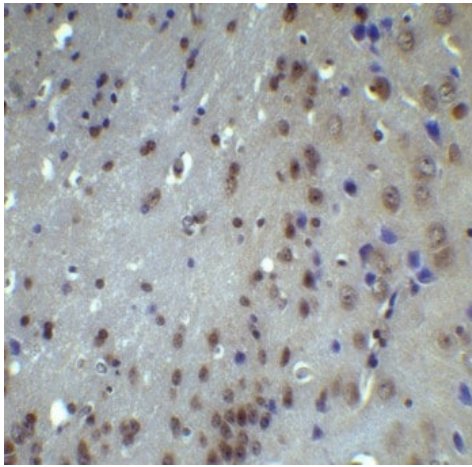
Anti-ATF6 antibody (ab37149) at 1 µg/ml + Rat Kidney Lysate at 15 µg

**Secondary**

Goat Anti-Rabbit IgG HRP Conjugate at 1/10000 dilution

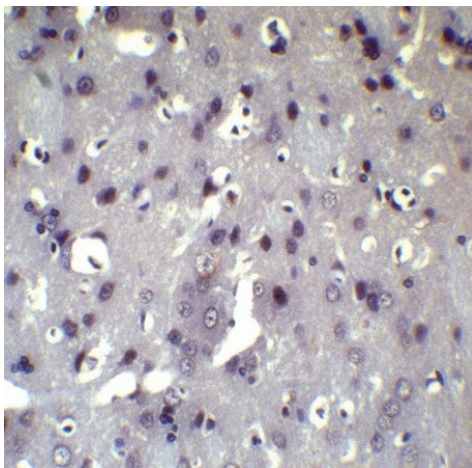
**Predicted band size:** 75 kDa

**Blocking buffer:** 5% NFDM/TBST.



Immunohistochemistry (Formalin/PFA-fixed paraffin-embedded sections) - Anti-ATF6 antibody (ab37149)

Immunohistochemical analysis of paraffin-embedded mouse brain tissue using ab37149 at 5µg/ml. Tissue was fixed with formaldehyde and blocked with 10% serum for 1h at RT. Antigen retrieval was by heat mediation with a citrate buffer (pH 6.0). Samples were incubated with primary antibody overnight at 4°C. Goat anti-rabbit IgG H&L (HRP) at 1/250 dilution was used as a secondary. Counter stained with Hematoxylin.



Immunohistochemistry (Formalin/PFA-fixed paraffin-embedded sections) - Anti-ATF6 antibody (ab37149)

Immunohistochemical analysis of paraffin-embedded rat brain tissue using ab37149 at 5µg/ml. Tissue was fixed with formaldehyde and blocked with 10% serum for 1h at RT. Antigen retrieval was by heat mediation with a citrate buffer (pH 6.0). Samples were incubated with primary antibody overnight at 4°C. Goat anti-rabbit IgG H&L (HRP) at 1/250 dilution was used as a secondary. Counter stained with Hematoxylin.

**Please note:** All products are "FOR RESEARCH USE ONLY. NOT FOR USE IN DIAGNOSTIC PROCEDURES"

### Our Abpromise to you: Quality guaranteed and expert technical support

- Replacement or refund for products not performing as stated on the datasheet
- Valid for 12 months from date of delivery
- Response to your inquiry within 24 hours
- We provide support in Chinese, English, French, German, Japanese and Spanish
- Extensive multi-media technical resources to help you
- We investigate all quality concerns to ensure our products perform to the highest standards

If the product does not perform as described on this datasheet, we will offer a refund or replacement. For full details of the Abpromise, please visit <https://www.abcam.co.jp/abpromise> or contact our technical team.

## Terms and conditions

---

- Guarantee only valid for products bought direct from Abcam or one of our authorized distributors