

### Anti-ATF2 antibody ab47476

★★★★☆ [1 Abreviews](#) [12 References](#) [画像数 2](#)

#### 製品の概要

製品名	Anti-ATF2 antibody
製品の詳細	Rabbit polyclonal to ATF2
由来種	Rabbit
特異性	ATF2 antibody detects endogenous levels of ATF2 protein around Threonine 71 or 53.
アプリケーション	<b>適用あり:</b> WB, IHC-P
種交差性	<b>交差種:</b> Human
免疫原	Synthetic peptide corresponding to Human ATF2 aa 38-87. Database link: <a href="#">P15336</a>
ポジティブ・コントロール	WB: Extracts from HeLa cells. IHC-P: Human breast carcinoma.
特記事項	<p>The Life Science industry has been in the grips of a reproducibility crisis for a number of years. Abcam is leading the way in addressing this with our range of recombinant monoclonal antibodies and knockout edited cell lines for gold-standard validation. Please check that this product meets your needs before purchasing.</p> <p>If you have any questions, special requirements or concerns, please send us an inquiry and/or contact our Support team ahead of purchase. Recommended alternatives for this product can be found below, along with publications, customer reviews and Q&amp;As</p>

#### 製品の特性

製品の状態	Liquid
保存方法	Shipped at 4°C. Store at -20°C. Stable for 12 months at -20°C.
バッファー	pH: 7.40 Preservative: 0.02% Sodium azide Constituents: PBS, 50% Glycerol (glycerin, glycerine), 0.87% Sodium chloride
ポリ/モノ	ポリクローナル
アイソタイプ	IgG

#### アプリケーション

The Abpromise guarantee

**Abpromise保証は、次のテスト済みアプリケーションにおけるab47476の使用に適用されます**

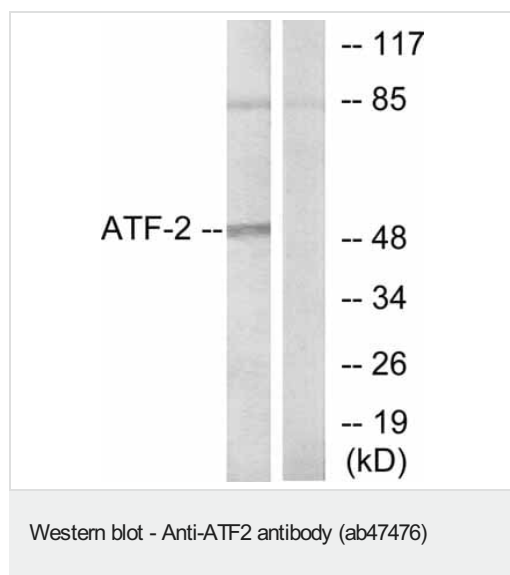
アプリケーションノートには、推奨の開始希釈率がありますが、適切な希釈率につきましてはご確認ください。

アプリケーション	Abreviews	特記事項
WB	★★★★★ (1)	1/500 - 1/1000. Predicted molecular weight: 52 kDa.
IHC-P		Use at an assay dependent concentration.

## ターゲット情報

機能	Transcriptional activator, probably constitutive, which binds to the cAMP-responsive element (CRE) (consensus: 5'-GTGACGT[AC][AG]-3'), a sequence present in many viral and cellular promoters. Interaction with JUN redirects JUN to bind to CREs preferentially over the 12-O-tetradecanoylphorbol-13-acetate response elements (TRES) as part of an ATF2/JUN complex.
組織特異性	Abundant expression seen in the brain.
配列類似性	Belongs to the bZIP family. ATF subfamily. Contains 1 bZIP domain. Contains 1 C2H2-type zinc finger.
翻訳後修飾	Phosphorylation of Thr-69 and Thr-71 by MAPK14 causes increased transcriptional activity. Also phosphorylated and activated by JNK.
細胞内局在	Nucleus.

## 画像



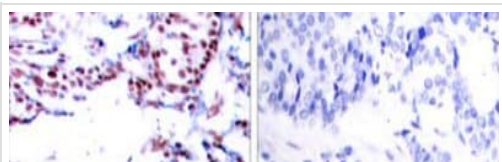
**All lanes** : Anti-ATF2 antibody (ab47476) at 1/500 dilution

**Lane 1** : extracts from HeLa cells.

**Lane 2** : extracts from HeLa cells preincubated with immunizing peptide

**Predicted band size:** 52 kDa

**Observed band size:** 52 kDa



Immunohistochemistry (Formalin/PFA-fixed paraffin-embedded sections) - Anti-ATF2 antibody (ab47476)

Immunohistochemical analysis of paraffin-embedded human breast carcinoma. Left: Using ATF2 antibody; Right: The same antibody preincubated with synthesized peptide.

**Please note:** All products are "FOR RESEARCH USE ONLY. NOT FOR USE IN DIAGNOSTIC PROCEDURES"

### **Our Abpromise to you: Quality guaranteed and expert technical support**

---

- Replacement or refund for products not performing as stated on the datasheet
- Valid for 12 months from date of delivery
- Response to your inquiry within 24 hours
- We provide support in Chinese, English, French, German, Japanese and Spanish
- Extensive multi-media technical resources to help you
- We investigate all quality concerns to ensure our products perform to the highest standards

If the product does not perform as described on this datasheet, we will offer a refund or replacement. For full details of the Abpromise, please visit <https://www.abcam.co.jp/abpromise> or contact our technical team.

### **Terms and conditions**

---

- Guarantee only valid for products bought direct from Abcam or one of our authorized distributors