


Anti-ATF1 (phospho S63) antibody [EP1591(2)Y] ab76085

RabMAb

★★★★★ **1 Abreviews** **8 References** 画像数 2

製品の概要

製品名	Anti-ATF1 (phospho S63) antibody [EP1591(2)Y]
製品の詳細	Rabbit monoclonal [EP1591(2)Y] to ATF1 (phospho S63)
由来種	Rabbit
アプリケーション	適用あり: WB, IHC-P 適用なし: Flow Cyt or IP
種交差性	交差種: Human 交差が予測される動物種: Mouse, Rat 
免疫原	Synthetic peptide. This information is proprietary to Abcam and/or its suppliers.
ポジティブ・コントロール	WB: HeLa whole cell lysate (ab150035) IHC-P: human breast carcinoma tissue
特記事項	Our RabMAb [®] technology is a patented hybridoma-based technology for making rabbit monoclonal antibodies. For details on our patents, please refer to RabMAb[®] patents . The Life Science industry has been in the grips of a reproducibility crisis for a number of years. Abcam is leading the way in addressing this with our range of recombinant monoclonal antibodies and knockout edited cell lines for gold-standard validation. Please check that this product meets your needs before purchasing. If you have any questions, special requirements or concerns, please send us an inquiry and/or contact our Support team ahead of purchase. Recommended alternatives for this product can be found below, along with publications, customer reviews and Q&As

製品の特性

製品の状態	Liquid
保存方法	Shipped at 4°C. Upon delivery aliquot and store at -20°C. Avoid repeated freeze / thaw cycles.
バッファー	pH: 7.20 Preservative: 0.05% Sodium azide Constituents: 0.1% BSA, 40% Glycerol (glycerin, glycerine), 9.85% Tris glycine, 50% Tissue culture supernatant
精製度	Tissue culture supernatant
ポリ/モノ	モノクローナル

クローン名 EP1591(2)Y
アイソタイプ IgG

アプリケーション

The Abpromise guarantee Abpromise保証は、 次のテスト済みアプリケーションにおけるab76085の使用に適用されます
アプリケーションノートには、推奨の開始希釈率がありますが、適切な希釈率につきましてはご検討ください。

アプリケーション	Abreviews	特記事項
WB	★★★★★ (1)	1/50000 - 1/100000. Predicted molecular weight: 29 kDa.
IHC-P		1/100 - 1/250.

追加情報 Is unsuitable for Flow Cyt or IP.

ターゲット情報

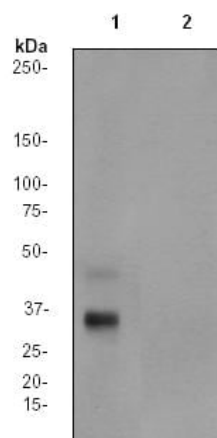
機能 This protein binds the cAMP response element (CRE) (consensus: 5'-GTGACGT[AC][AG]-3'), a sequence present in many viral and cellular promoters. Binds to the Tax-responsive element (TRE) of HTLV-I. Mediates PKA-induced stimulation of CRE-reporter genes.

関連疾患 Defects in ATF1 may be a cause of angiomatoid fibrous histiocytoma (AFH) [MIM:612160]. A distinct variant of malignant fibrous histiocytoma that typically occurs in children and adolescents and is manifest by nodular subcutaneous growth. Characteristic microscopic features include lobulated sheets of histiocyte-like cells intimately associated with areas of hemorrhage and cystic pseudovascular spaces, as well as a striking cuffing of inflammatory cells, mimicking a lymph node metastasis. Note=Chromosomal aberrations involving ATF1 are found in patients with angiomatoid fibrous histiocytoma. Translocation t(12;16)(q13;p11.2) with FUS generates a chimeric ATF1/FUS protein. Translocation t(12;22)(q13;q12) with EWSR1 generates a chimeric ATF1/EWSR1 protein.

配列類似性 Belongs to the bZIP family. ATF subfamily.
Contains 1 bZIP domain.
Contains 1 KID (kinase-inducible) domain.

細胞内局在 Nucleus.

画像



Western blot - Anti-ATF1 (phospho S63) antibody [EP1591(2)Y] (ab76085)

All lanes : Anti-ATF1 (phospho S63) antibody [EP1591(2)Y] (ab76085) at 1/100000 dilution

Lane 1 : HeLa cell lysate untreated

Lane 2 : HeLa cell lysate, treated with Lambda Phosphatase

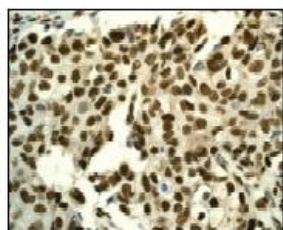
Lysates/proteins at 10 µg per lane.

Secondary

All lanes : Goat anti rabbit HRP labelled IgG at 1/2000 dilution

Predicted band size: 29 kDa

Observed band size: 29 kDa



Immunohistochemistry (Formalin/PFA-fixed paraffin-embedded sections) - Anti-ATF1 (phospho S63) antibody [EP1591(2)Y] (ab76085)

Immunohistochemical analysis of ATF1 in paraffin embedded human breast carcinoma tissue, using ab76085 at a 1/100 dilution.

Please note: All products are "FOR RESEARCH USE ONLY. NOT FOR USE IN DIAGNOSTIC PROCEDURES"

Our Abpromise to you: Quality guaranteed and expert technical support

- Replacement or refund for products not performing as stated on the datasheet
- Valid for 12 months from date of delivery
- Response to your inquiry within 24 hours
- We provide support in Chinese, English, French, German, Japanese and Spanish

- Extensive multi-media technical resources to help you
- We investigate all quality concerns to ensure our products perform to the highest standards

If the product does not perform as described on this datasheet, we will offer a refund or replacement. For full details of the Abpromise, please visit <https://www.abcam.co.jp/abpromise> or contact our technical team.

Terms and conditions

- Guarantee only valid for products bought direct from Abcam or one of our authorized distributors