




Anti-ATF-4 antibody - C-terminal ab1371

★★★★★ [3 Abreviews](#) [20 References](#) [画像数 1](#)

製品の概要

製品名	Anti-ATF-4 antibody - C-terminal
製品の詳細	Goat polyclonal to ATF-4 - C-terminal
由来種	Goat
特異性	This antibody is expected to recognize both reported isoforms (NP_001666.2; NP_877962.1).
アプリケーション	適用あり: WB
種交差性	交差種: Mouse, Human, Pig 交差が予測される動物種: Rat, Cow 
免疫原	Synthetic peptide corresponding to Human ATF-4 aa 339-351 (C terminal) (Cysteine residue). Sequence: C-EEVRKARGKKRVP Database link: P18848 (Peptide available as ab22854) <div>  Run BLAST with  Run BLAST with </div>
ポジティブ・コントロール	WB: Mouse heart lysate
特記事項	<p>The Life Science industry has been in the grips of a reproducibility crisis for a number of years. Abcam is leading the way in addressing this with our range of recombinant monoclonal antibodies and knockout edited cell lines for gold-standard validation. Please check that this product meets your needs before purchasing.</p> <p>If you have any questions, special requirements or concerns, please send us an inquiry and/or contact our Support team ahead of purchase. Recommended alternatives for this product can be found below, along with publications, customer reviews and Q&As</p>

製品の特性

製品の状態	Liquid
保存方法	Shipped at 4°C. Upon delivery aliquot and store at -20°C or -80°C. Avoid repeated freeze / thaw cycles.
バッファー	pH: 7.30 Preservative: 0.02% Sodium azide Constituents: 0.05% Tris, 0.5% BSA

精製度	Immunogen affinity purified
特記事項(精製)	Purified from goat serum by ammonium sulphate precipitation followed by antigen affinity chromatography using the immunizing peptide.
ポリ/モノ	ポリクローナル
アイソタイプ	IgG

アプリケーション

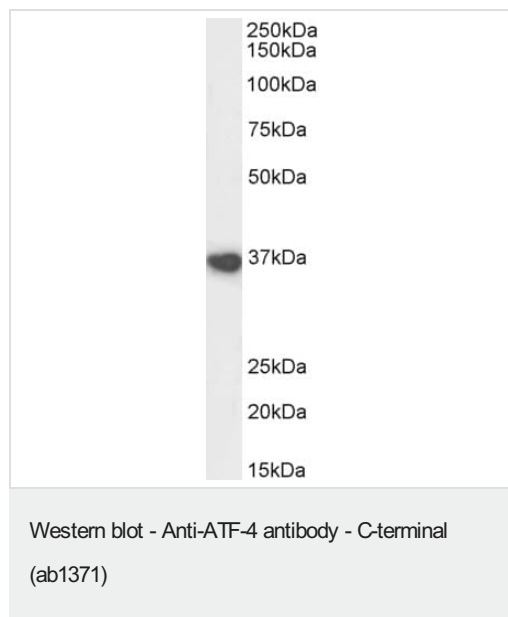
The Abpromise guarantee **Abpromise保証は、次のテスト済みアプリケーションにおけるab1371の使用に適用されます**
 アプリケーションノートには、推奨の開始希釈率がありますが、適切な希釈率につきましてはご確認ください。

アプリケーション	Abreviews	特記事項
WB	★★★★★ (2)	Use a concentration of 0.3 - 1 µg/ml. Detects a band of approximately 35-37 kDa (predicted molecular weight: 37 kDa). 1 hour primary incubation is recommended for this product.

ターゲット情報

機能	Transcriptional activator. Binds the cAMP response element (CRE) (consensus: 5'-GTGACGT[AC][AG]-3'), a sequence present in many viral and cellular promoters. It binds to a Tax-responsive enhancer element in the long terminal repeat of HTLV-I.
配列類似性	Belongs to the bZIP family. Contains 1 bZIP domain.
細胞内局在	Cytoplasm. Cell membrane. Nucleus. Colocalizes with GABBR1 in hippocampal neuron dendritic membranes.

画像



Anti-ATF-4 antibody - C-terminal (ab1371) at 1 µg/ml + Mouse
 Heart lysate at 35 µg

Predicted band size: 37 kDa
Observed band size: 35-37 kDa

Primary incubation for 1 hour. Detected by chemiluminescence.
 RIPA buffer used.

Please note: All products are "FOR RESEARCH USE ONLY. NOT FOR USE IN DIAGNOSTIC PROCEDURES"

Our Abpromise to you: Quality guaranteed and expert technical support

- Replacement or refund for products not performing as stated on the datasheet
- Valid for 12 months from date of delivery
- Response to your inquiry within 24 hours

- We provide support in Chinese, English, French, German, Japanese and Spanish
- Extensive multi-media technical resources to help you
- We investigate all quality concerns to ensure our products perform to the highest standards

If the product does not perform as described on this datasheet, we will offer a refund or replacement. For full details of the Abpromise, please visit <https://www.abcam.co.jp/abpromise> or contact our technical team.

Terms and conditions

- Guarantee only valid for products bought direct from Abcam or one of our authorized distributors