


Anti-Atad5 antibody ab72111

★★★★★ [1 Abreviews](#) [3 References](#) [画像数 2](#)

製品の概要

製品名	Anti-Atad5 antibody
製品の詳細	Rabbit polyclonal to Atad5
由来種	Rabbit
アプリケーション	適用あり: WB, IP
種交差性	交差種: Human 交差が予測される動物種: Chimpanzee, Gorilla 
免疫原	Synthetic peptide corresponding to a region between residues 775 and 825 of human Atad5 (NP_079133.3)
特記事項	<p>The Life Science industry has been in the grips of a reproducibility crisis for a number of years. Abcam is leading the way in addressing this with our range of recombinant monoclonal antibodies and knockout edited cell lines for gold-standard validation. Please check that this product meets your needs before purchasing.</p> <p>If you have any questions, special requirements or concerns, please send us an inquiry and/or contact our Support team ahead of purchase. Recommended alternatives for this product can be found below, along with publications, customer reviews and Q&As</p>

製品の特性

製品の状態	Liquid
保存方法	Shipped at 4°C. Upon delivery aliquot and store at -20°C. Avoid freeze / thaw cycles.
バッファー	pH: 6.8 Preservative: 0.09% Sodium azide Constituents: 1.815% Tris, 1.764% Sodium citrate, 0.021% PBS
精製度	Immunogen affinity purified
特記事項(精製)	ab72111 was affinity purified using an epitope specific to Atad5 immobilized on solid support.
ポリ/モノ	ポリクローナル
アイソタイプ	IgG

アプリケーション

The Abpromise guarantee

Abpromise保証は、次のテスト済みアプリケーションにおけるab72111の使用に適用されます

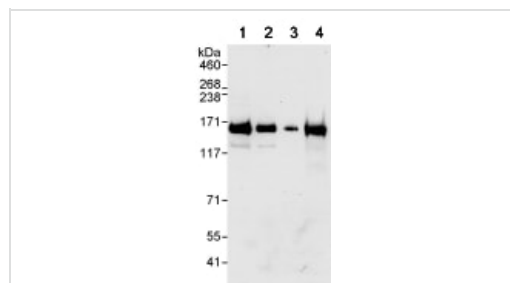
アプリケーションノートには、推奨の開始希釈率がありますが、適切な希釈率につきましてはご検討ください。

アプリケーション	Abreviews	特記事項
WB		1/2000 - 1/10000. Detects a band of approximately 160 kDa (predicted molecular weight: 208 kDa). One of our customer have mentioned using WB protocol published in J. Biol. Chem. 2010, 285:10362-10369 with lymphoblastoid cell.
IP		Use at 2-5 µg/mg of lysate.

ターゲット情報

機能	Involved in DNA damage response. Involved in a RAD9A-related damage checkpoint, a pathway that is important in determining whether DNA damage is compatible with cell survival or whether it requires cell elimination by apoptosis. Modulates the RAD9A interaction with BCL2 and thereby induces DNA damages-induced apoptosis.
配列類似性	Belongs to the AAA ATPase family.
翻訳後修飾	ATR may stimulate the RAD9A dissociation.
細胞内局在	Nucleus.

画像



Western blot - Anti-Atad5 antibody (ab72111)

All lanes : Anti-Atad5 antibody (ab72111) at 0.1 µg/ml

Lane 1 : HeLa whole cell lysate at 50 µg/ml

Lane 2 : HeLa whole cell lysate at 15 µg/ml

Lane 3 : HeLa whole cell lysate at 5 µg/ml

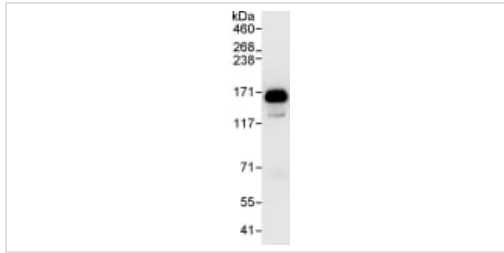
Lane 4 : 293T whole cell lysate at 50 µg/ml

Developed using the ECL technique.

Predicted band size: 208 kDa

Observed band size: 160 kDa

Exposure time: 30 seconds



Immunoprecipitation - Anti-Atad5 antibody (ab72111)

Detection of Atad5 by Western Blot of Immunoprecipitate.
ab72111 at 1µg/ml staining Atad5 in HeLa whole cell lysate
immunoprecipitated using ab72111 at 3µg/mg lysate (1 mg/IP; 20%
of IP loaded/lane).
Detection: Chemiluminescence with exposure time of 30 seconds.

Please note: All products are "FOR RESEARCH USE ONLY. NOT FOR USE IN DIAGNOSTIC PROCEDURES"

Our Abpromise to you: Quality guaranteed and expert technical support

- Replacement or refund for products not performing as stated on the datasheet
- Valid for 12 months from date of delivery
- Response to your inquiry within 24 hours

- We provide support in Chinese, English, French, German, Japanese and Spanish
- Extensive multi-media technical resources to help you
- We investigate all quality concerns to ensure our products perform to the highest standards

If the product does not perform as described on this datasheet, we will offer a refund or replacement. For full details of the Abpromise, please visit <https://www.abcam.co.jp/abpromise> or contact our technical team.

Terms and conditions

- Guarantee only valid for products bought direct from Abcam or one of our authorized distributors