

Anti-ATAD3A antibody ab112572

3 References [画像数 3](#)

製品の概要

製品名	Anti-ATAD3A antibody
製品の詳細	Rabbit polyclonal to ATAD3A
由来種	Rabbit
特異性	ab112572 is predicted to not cross-react with other ATAD protein family members.
アプリケーション	適用あり: WB, ICC/IF, ICC
種交差性	交差種: Human
免疫原	Synthetic peptide corresponding to Human ATAD3A (N terminal). A 19 amino acid peptide corresponding to a region near the N terminal of Human ATAD3A. Database link: Q9NVI7
ポジティブ・コントロール	Daudi cell lysate.
特記事項	<p>The Life Science industry has been in the grips of a reproducibility crisis for a number of years. Abcam is leading the way in addressing this with our range of recombinant monoclonal antibodies and knockout edited cell lines for gold-standard validation. Please check that this product meets your needs before purchasing.</p> <p>If you have any questions, special requirements or concerns, please send us an inquiry and/or contact our Support team ahead of purchase. Recommended alternatives for this product can be found below, along with publications, customer reviews and Q&As</p>

製品の特性

製品の状態	Liquid
保存方法	Shipped at 4°C. Store at +4°C.
バッファー	pH: 7.2 Preservative: 0.02% Sodium azide Constituent: 99% PBS
精製度	Immunogen affinity purified
特記事項(精製)	ab112572 is purified by affinity chromatography purified via peptide column.
ポリモノ	ポリクローナル
アイソタイプ	IgG

アプリケーション

The Abpromise guarantee **Abpromise保証は、次のテスト済みアプリケーションにおけるab112572の使用に適用されます**
アプリケーションノートには、推奨の開始希釈率がありますが、適切な希釈率につきましてはご検討ください。

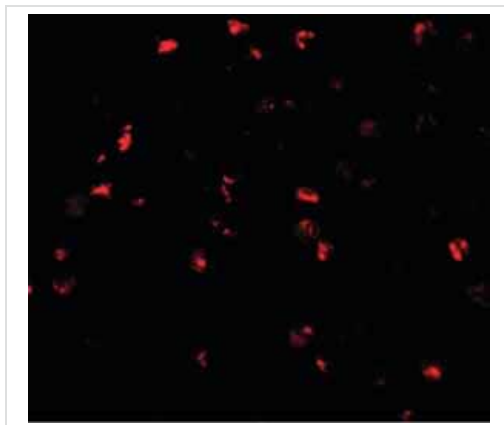
アプリケーション	Abreviews	特記事項
WB		Use a concentration of 1 - 2 µg/ml. Predicted molecular weight: 71 kDa.
ICC/IF		Use a concentration of 20 µg/ml.
ICC		Use a concentration of 20 µg/ml.

ターゲット情報

関連性 ATAD3A belongs to the AAA ATPase family. ATPases are a class of enzymes that catalyze the decomposition of adenosine triphosphate (ATP) into adenosine diphosphate (ADP) and a free phosphate ion. Two different isoforms obtained by alternative splicing, are known.

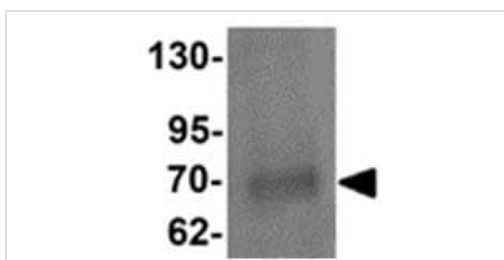
細胞内局在 Mitochondrial

画像



Immunofluorescence of ATAD3A in Daudi cells with ab112572 at 20 µg/mL.

Immunocytochemistry/ Immunofluorescence - Anti-ATAD3A antibody (ab112572)



Anti-ATAD3A antibody (ab112572) at 1 µg/ml + Daudi cell lysate at 15 µg

Predicted band size: 71 kDa

Western blot - Anti-ATAD3A antibody (ab112572)



Immunocytochemistry of ATAD3A in Daudi cells with ab112572 at 20 ug/mL.

Immunocytochemistry - Anti-ATAD3A antibody (ab112572)

Please note: All products are "FOR RESEARCH USE ONLY. NOT FOR USE IN DIAGNOSTIC PROCEDURES"

Our Abpromise to you: Quality guaranteed and expert technical support

- Replacement or refund for products not performing as stated on the datasheet
- Valid for 12 months from date of delivery
- Response to your inquiry within 24 hours
- We provide support in Chinese, English, French, German, Japanese and Spanish
- Extensive multi-media technical resources to help you
- We investigate all quality concerns to ensure our products perform to the highest standards

If the product does not perform as described on this datasheet, we will offer a refund or replacement. For full details of the Abpromise, please visit <https://www.abcam.co.jp/abpromise> or contact our technical team.

Terms and conditions

- Guarantee only valid for products bought direct from Abcam or one of our authorized distributors