

Anti-ASS1 antibody [2B10] ab124465

KO 評価済

11 References 画像数 7

製品の概要

製品名	Anti-ASS1 antibody [2B10]
製品の詳細	Mouse monoclonal [2B10] to ASS1
由来種	Mouse
アプリケーション	適用あり: WB, ELISA, Flow Cyt, ICC/IF
種交差性	交差種: Mouse, Rat, Human, African green monkey
免疫原	Purified recombinant fragment of Human ASS1, expressed in E. Coli.
ポジティブ・コントロール	ICC/IF: HeLa cells. Flow Cyt: Jurkat cells. WB: Human ASS1 recombinant protein; HAP1, A431, Raji, L1210, MOLT4, Jurkat, A549, NIH 3T3, PC12 and COS7 cell lysates.
特記事項	<p>This product was changed from ascites to supernatant. Lot no's high than GR119162-30 are from Tissue Culture Supernatant</p> <p>The Life Science industry has been in the grips of a reproducibility crisis for a number of years. Abcam is leading the way in addressing this with our range of recombinant monoclonal antibodies and knockout edited cell lines for gold-standard validation. Please check that this product meets your needs before purchasing.</p> <p>If you have any questions, special requirements or concerns, please send us an inquiry and/or contact our Support team ahead of purchase. Recommended alternatives for this product can be found below, along with publications, customer reviews and Q&As</p>

製品の特性

製品の状態	Liquid
保存方法	Shipped at 4°C. Store at +4°C short term (1-2 weeks). Store at -20°C long term.
バッファー	Preservative: 0.05% Sodium azide Constituent: 99% PBS
精製度	Protein G purified
特記事項 (精製)	Purified from tissue culture supernatant.
ポリ/モノ	モノクローナル
クローン名	2B10

アプリケーション

The Abpromise guarantee Abpromise保証は、次のテスト済みアプリケーションにおけるab124465の使用に適用されます
 アプリケーションノートには、推奨の開始希釈率がありますが、適切な希釈率につきましてはご検討ください。

アプリケーション	Abreviews	特記事項
WB		1/500 - 1/2000. Detects a band of approximately 47 kDa (predicted molecular weight: 47 kDa).
ELISA		1/10000.
Flow Cyt		1/200 - 1/400. <u>ab170190</u> - Mouse monoclonal IgG1, is suitable for use as an isotype control with this antibody.
ICC/IF		1/200 - 1/1000.

ターゲット情報

パスウェイ

Amino-acid biosynthesis; L-arginine biosynthesis; L-arginine from L-ornithine and carbamoyl phosphate: step 2/3.
 Nitrogen metabolism; urea cycle; (N(omega)-L-arginino)succinate from L-aspartate and L-citrulline: step 1/1.

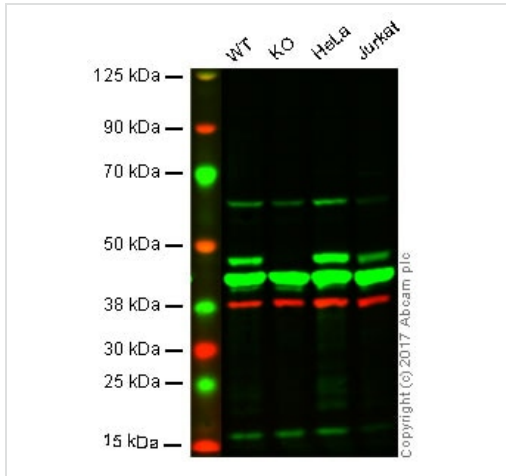
関連疾患

Defects in ASS1 are the cause of citrullinemia type 1 (CTLN1) [MIM:215700]. Citrullinemia belongs to the urea cycle disorders. It is an autosomal recessive disease characterized primarily by elevated serum and urine citrulline levels. Ammonia intoxication is another manifestation. CTLN1 usually manifests in the first few days of life. Affected infants appear normal at birth, but as ammonia builds up in the body they present symptoms such as lethargy, poor feeding, vomiting, seizures and loss of consciousness. Less commonly, a milder CTLN1 form can develop later in childhood or adulthood.

配列類似性

Belongs to the argininosuccinate synthase family. Type 1 subfamily.

画像



Western blot - Anti-ASS1 antibody [2B10]
(ab124465)

Lane 1: Wild type HAP1 whole cell lysate (20 µg)

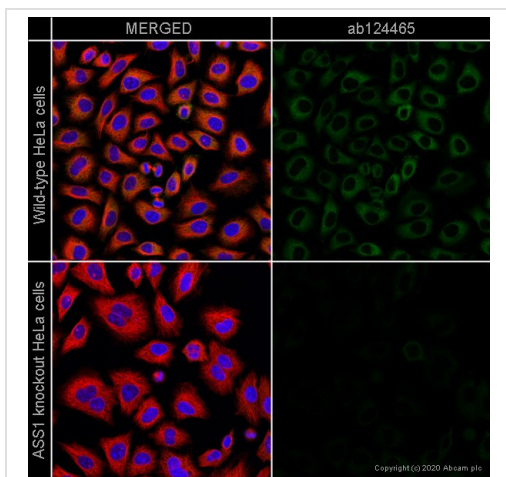
Lane 2: ASS1 knockout HAP1 whole cell lysate (20 µg)

Lane 3: HeLa whole cell lysate (20 µg)

Lane 4: Jurkat whole cell lysate (20 µg)

Lanes 1 - 4: Merged signal (red and green). Green - ab124465 observed at 47 kDa. Red - loading control, **ab181602**, observed at 37 kDa.

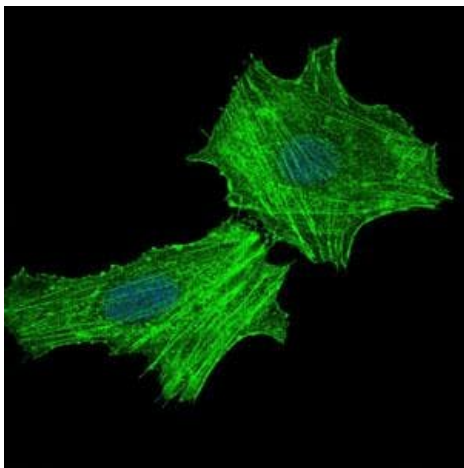
ab124465 was shown to recognize ASS1 when ASS1 knockout samples were used, along with additional cross-reactive bands. Wild-type and ASS1 knockout samples were subjected to SDS-PAGE. ab124465 and **ab181602** (Rabbit anti-GAPDH loading control) were incubated overnight at 4°C at a 1/500 dilution and 1/10000 dilution respectively. Blots were developed with Goat anti-Mouse IgG H&L (IRDye® 800CW) preabsorbed **ab216772** and Goat anti-Rabbit IgG H&L (IRDye® 680RD) preabsorbed **ab216777** secondary antibodies at 1/10000 dilution for 1 hour at room temperature before imaging.



Immunocytochemistry/ Immunofluorescence - Anti-ASS1 antibody [2B10] (ab124465)

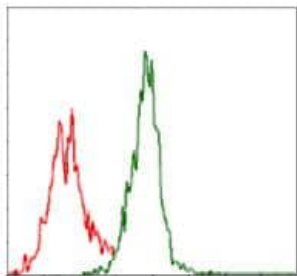
ab124465 staining ASS1 in wild-type HeLa cells (top panel) and ASS1 knockout HeLa cells (**ab264989**) (bottom panel). The cells were fixed with 100% methanol (5 min) then permeabilized with 0.1% Triton X-100 for 5 minutes and then blocked with 1% BSA/10% normal goat serum/0.3M glycine in 0.1% PBS-Tween for 1h. The cells were then incubated with ab124465 at 1/1000 dilution and **ab6046** (Rabbit polyclonal to beta Tubulin) at 1/1000 dilution overnight at 4°C followed by a further incubation at room temperature for 1h with a goat secondary antibody to mouse IgG (Alexa Fluor® 488) (**ab150117**) at 2 µg/ml (shown in green) and a goat secondary antibody to rabbit IgG (Alexa Fluor® 594) (**ab150080**) at 2 µg/ml (shown in red). Nuclear DNA was labelled in blue with DAPI.

Image was taken with a confocal microscope (Leica-Microsystems TCS SP8).



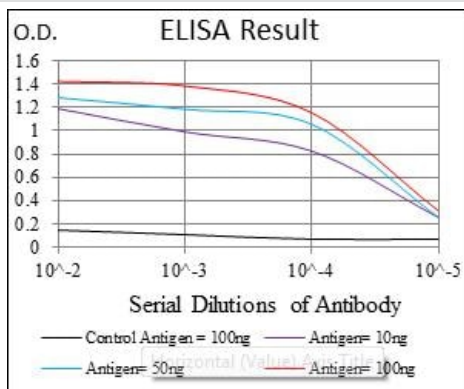
Immunocytochemistry/ Immunofluorescence - Anti-ASS1 antibody [2B10] (ab124465)

ab124465, at 1/200 dilution, staining ASS1 in HeLa cells by Immunofluorescence (green). Blue: DRAQ5 fluorescent DNA dye.



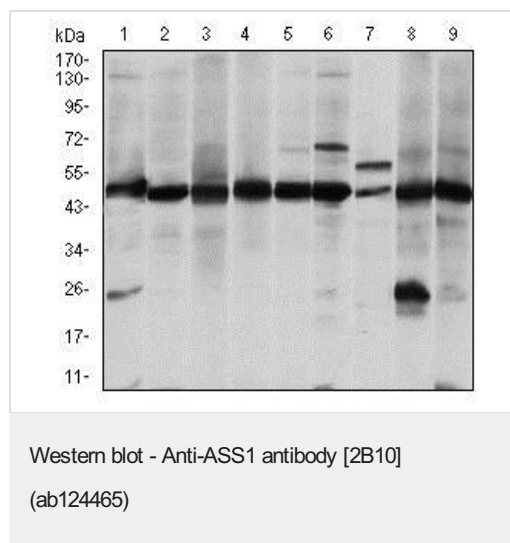
Flow Cytometry - Anti-ASS1 antibody [2B10] (ab124465)

ab124465, at 1/200 dilution, staining ASS1 in Jurkat cells (green) by flow cytometry or negative control (red).



ELISA - Anti-ASS1 antibody [2B10] (ab124465)

ELISA using ab124465.



All lanes : Anti-ASS1 antibody [2B10] (ab124465) at 1/500 dilution

Lane 1 : A431 cell lysate

Lane 2 : Raji cell lysate

Lane 3 : L1210 cell lysate

Lane 4 : MOLT4 cell lysate

Lane 5 : Jurkat cell lysate

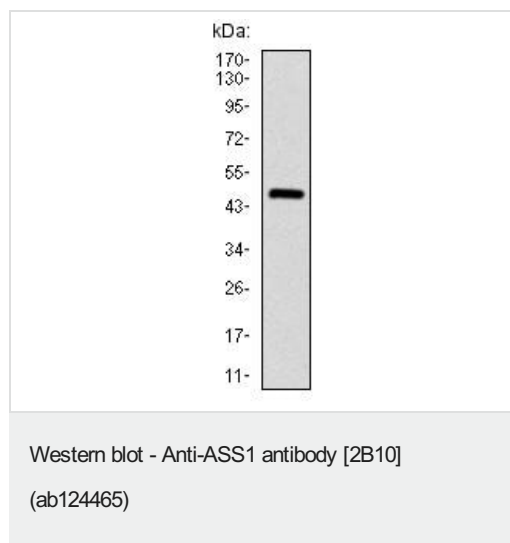
Lane 6 : A549 cell lysate

Lane 7 : NIH 3T3 cell lysate

Lane 8 : PC12 cell lysate

Lane 9 : COS7 cell lysate

Predicted band size: 47 kDa



Anti-ASS1 antibody [2B10] (ab124465) at 1/500 dilution + Human
ASS1 recombinant protein (aa: 40-236)

Predicted band size: 47 kDa

Please note: All products are "FOR RESEARCH USE ONLY. NOT FOR USE IN DIAGNOSTIC PROCEDURES"

Our Abpromise to you: Quality guaranteed and expert technical support

- Replacement or refund for products not performing as stated on the datasheet
- Valid for 12 months from date of delivery
- Response to your inquiry within 24 hours
- We provide support in Chinese, English, French, German, Japanese and Spanish
- Extensive multi-media technical resources to help you

- We investigate all quality concerns to ensure our products perform to the highest standards

If the product does not perform as described on this datasheet, we will offer a refund or replacement. For full details of the Abpromise, please visit <https://www.abcam.co.jp/abpromise> or contact our technical team.

Terms and conditions

- Guarantee only valid for products bought direct from Abcam or one of our authorized distributors