

Anti-ASPP1 antibody ab71163

2 References [画像数 2](#)

製品の概要

| | |
|--------------|---|
| 製品名 | Anti-ASPP1 antibody |
| 製品の詳細 | Rabbit polyclonal to ASPP1 |
| 由来種 | Rabbit |
| アプリケーション | 適用あり: WB, IP |
| 種交差性 | 交差種: Human 交差が予測される動物種: Chimpanzee, Rhesus monkey, Gorilla, Orangutan  |
| 免疫原 | A synthetic peptide corresponding to a region between residue 50 and 100 of human ASPP1 (NP_056131.1) |
| ポジティブ・コントロール | Whole cell lysate from 293T cells and Hela cells. |
| 特記事項 | <p>The Life Science industry has been in the grips of a reproducibility crisis for a number of years. Abcam is leading the way in addressing this with our range of recombinant monoclonal antibodies and knockout edited cell lines for gold-standard validation. Please check that this product meets your needs before purchasing.</p> <p>If you have any questions, special requirements or concerns, please send us an inquiry and/or contact our Support team ahead of purchase. Recommended alternatives for this product can be found below, along with publications, customer reviews and Q&As</p> |

製品の特性

| | |
|--------|---|
| 製品の状態 | Liquid |
| 保存方法 | Shipped at 4°C. Upon delivery aliquot and store at -20°C. Avoid freeze / thaw cycles. |
| バッファー | pH: 7 Preservative: 0.09% Sodium azide Constituents: 1.815% Tris, 1.764% Sodium citrate, 0.021% PBS |
| 精製度 | Immunogen affinity purified |
| ポリ/モノ | ポリクローナル |
| アイソタイプ | IgG |

アプリケーション

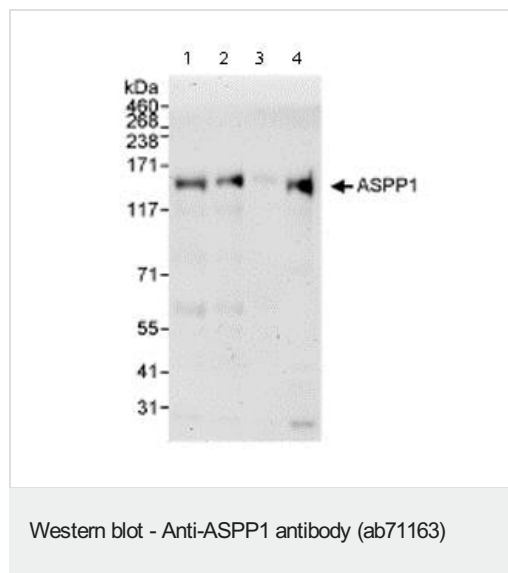
The Abpromise guarantee Abpromise保証は、 次のテスト済みアプリケーションにおけるab71163の使用に適用されます
 アプリケーションノートには、推奨の開始希釈率がありますが、適切な希釈率につきましてはご確認ください。

| アプリケーション | Abreviews | 特記事項 |
|----------|-----------|--|
| WB | | 1/2000 - 1/10000. Detects a band of approximately 145 kDa (predicted molecular weight: 121 kDa). |
| IP | | Use at 2-5 µg/mg of lysate. |

ターゲット情報

| | |
|-------|--|
| 機能 | Regulator that plays a central role in regulation of apoptosis via its interaction with p53/TP53. Regulates TP53 by enhancing the DNA binding and transactivation function of TP53 on the promoters of proapoptotic genes in vivo. |
| 組織特異性 | Reduced expression in breast carcinomas expressing a wild-type TP53 protein. |
| 配列類似性 | Belongs to the ASPP family. Contains 2 ANK repeats. Contains 1 SH3 domain. |
| ドメイン | The ankyrin repeats and the SH3 domain are required for specific interactions with TP53. |
| 細胞内局在 | Cytoplasm. Nucleus. Predominantly cytoplasmic. Some fraction is nuclear. |

画像



All lanes : Anti-ASPP1 antibody (ab71163) at 0.1 µg/ml

Lane 1 : Whole cell lysate from 293T cells at 50 µg

Lane 2 : Whole cell lysate from 293T cells at 15 µg

Lane 3 : Whole cell lysate from 293T cells at 5 µg

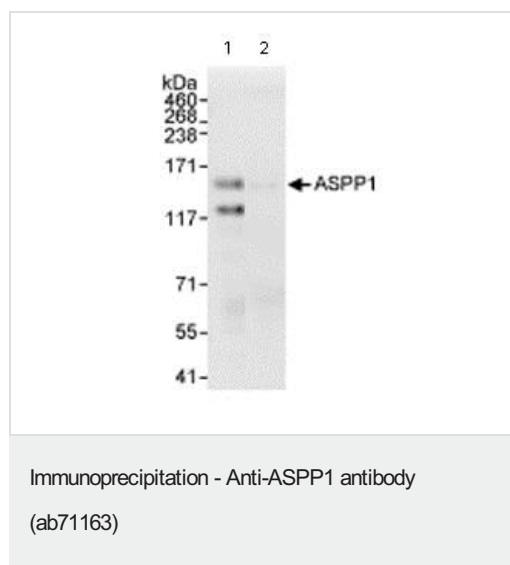
Lane 4 : Whole cell lysate from Hela cells at 50 µg

Developed using the ECL technique.

Predicted band size: 121 kDa

Observed band size: 145 kDa

Exposure time: 3 minutes



Immunoprecipitation/ Western Blot of ASPP1.

Lane 1: ab71163 at 3µg/mg whole cell lysate.

Lane 2: Control IgG.

All lanes: Whole cell lysate from Hela cells at 1 mg for IP, 20% of IP loaded.

Detection: Chemiluminescence with an exposure time of 10 seconds.

Please note: All products are "FOR RESEARCH USE ONLY. NOT FOR USE IN DIAGNOSTIC PROCEDURES"

Our Abpromise to you: Quality guaranteed and expert technical support

- Replacement or refund for products not performing as stated on the datasheet
- Valid for 12 months from date of delivery
- Response to your inquiry within 24 hours
- We provide support in Chinese, English, French, German, Japanese and Spanish
- Extensive multi-media technical resources to help you
- We investigate all quality concerns to ensure our products perform to the highest standards

If the product does not perform as described on this datasheet, we will offer a refund or replacement. For full details of the Abpromise, please visit <https://www.abcam.co.jp/abpromise> or contact our technical team.

Terms and conditions

- Guarantee only valid for products bought direct from Abcam or one of our authorized distributors