

### Anti-Asialoglycoprotein Receptor 1/HL-1 antibody ab88042

★★★★★ [4 Abreviews](#) [5 References](#) [画像数 3](#)

#### 製品の概要

製品名	Anti-Asialoglycoprotein Receptor 1/HL-1 antibody
製品の詳細	Rabbit polyclonal to Asialoglycoprotein Receptor 1/HL-1
由来種	Rabbit
特異性	From Jan 2024, QC testing of replenishment batches of this polyclonal changed. All tested and expected application and reactive species combinations are still covered by our Abcam product promise. However, we no longer test all applications. For more information on a specific batch, please contact our Scientific Support who will be happy to help. You may also be interested in our alternative recombinant antibody, <a href="#">ab254261</a> .
アプリケーション	適用あり: IHC-P, WB
種交差性	交差種: Human 交差が予測される動物種: Orangutan 
免疫原	Synthetic peptide. This information is proprietary to Abcam and/or its suppliers. (Peptide available as <a href="#">ab98248</a> )
ポジティブ・コントロール	This antibody gave a positive signal in HepG2 whole cell lysate and FFPE human liver tissue sections.
特記事項	<p>The Life Science industry has been in the grips of a reproducibility crisis for a number of years. Abcam is leading the way in addressing this with our range of recombinant monoclonal antibodies and knockout edited cell lines for gold-standard validation. Please check that this product meets your needs before purchasing.</p> <p>If you have any questions, special requirements or concerns, please send us an inquiry and/or contact our Support team ahead of purchase. Recommended alternatives for this product can be found below, along with publications, customer reviews and Q&amp;As</p>

#### 製品の特性

製品の状態	Liquid
保存方法	Shipped at 4°C. Store at +4°C short term (1-2 weeks). Upon delivery aliquot. Store at -20°C or -80°C. Avoid freeze / thaw cycle.
バッファー	pH: 7.40 Preservative: 0.02% Sodium azide Constituent: PBS

Batches of this product that have a concentration < 1mg/ml may have BSA added as a stabilising agent. If you would like information about the formulation of a specific lot, please contact our scientific support team who will be happy to help.

精製度	Immunogen affinity purified
ポリ/モノ	ポリクローナル
アイソタイプ	IgG

## アプリケーション

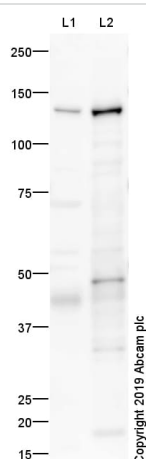
**The Abpromise guarantee**      **Abpromise保証は、次のテスト済みアプリケーションにおけるab88042の使用に適用されます**  
アプリケーションノートには、推奨の開始希釈率がありますが、適切な希釈率につきましてはご検討ください。

アプリケーション	Abreviews	特記事項
IHC-P		Use a concentration of 5 µg/ml. Perform heat mediated antigen retrieval before commencing with IHC staining protocol.
WB	★★★★★ (1)	Use a concentration of 1 µg/ml. Detects a band of approximately 46 kDa (predicted molecular weight: 33 kDa).

## ターゲット情報

機能	Mediates the endocytosis of plasma glycoproteins to which the terminal sialic acid residue on their complex carbohydrate moieties has been removed. The receptor recognizes terminal galactose and N-acetylgalactosamine units. After ligand binding to the receptor, the resulting complex is internalized and transported to a sorting organelle, where receptor and ligand are disassociated. The receptor then returns to the cell membrane surface.
組織特異性	Expressed exclusively in hepatic parenchymal cells.
配列類似性	Contains 1 C-type lectin domain.
翻訳後修飾	Phosphorylated on a cytoplasmic Ser residue.
細胞内局在	Membrane.

## 画像



Western blot - Anti-Asialoglycoprotein Receptor 1/HL-1 antibody (ab88042)

**All lanes :** Anti-Asialoglycoprotein Receptor 1/HL-1 antibody (ab88042) at 1 µg/ml

**Lane 1 :** Human Liver Tissue Lysate

**Lane 2 :** HepG2 Whole Cell Lysate

Lysates/proteins at 10 µg per lane.

#### Secondary

**All lanes :** Goat polyclonal to Rabbit IgG - H&L - Pre-Adsorbed (HRP) at 1/50000 dilution

Developed using the ECL technique.

Performed under reducing conditions.

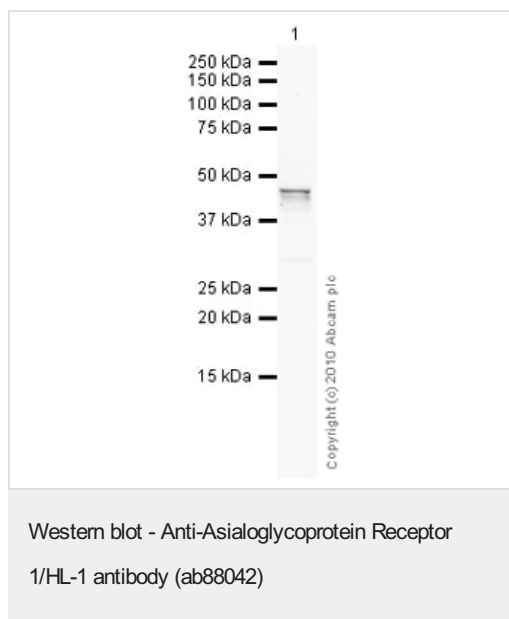
**Predicted band size:** 33 kDa

**Observed band size:** 44,48 kDa

**Additional bands at:** 140 kDa. We are unsure as to the identity of these extra bands.

**Exposure time:** 8 minutes

This blot was produced using a 4-12% Bis-tris gel under the MOPS buffer system. The gel was run at 200V for 50 minutes before being transferred onto a Nitrocellulose membrane at 30V for 70 minutes. The membrane was then blocked for an hour using 1% Milk/TBST before being incubated with ab88042 overnight at 4°C. Antibody binding was detected using an anti-rabbit antibody conjugated to HRP, and visualised using ECL development solution [ab133406](#)



Anti-Asialoglycoprotein Receptor 1/HL-1 antibody (ab88042) at 1 µg/ml + HepG2 (Human hepatocellular liver carcinoma cell line) Whole Cell Lysate at 10 µg

### Secondary

Goat polyclonal to Rabbit IgG - H&L - Pre-Adsorbed (HRP) at 1/3000 dilution

Developed using the ECL technique.

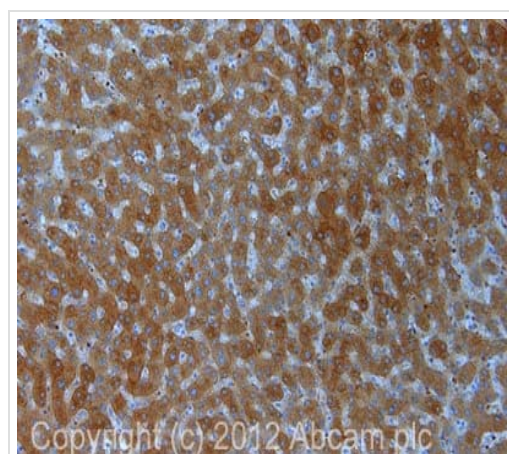
Performed under reducing conditions.

**Predicted band size:** 33 kDa

**Observed band size:** 46 kDa

**Exposure time:** 4 minutes

The predicted molecular weight of Human Asialoglycoprotein Receptor 1 / HL-1 is 33 kDa (SwissProt), however we expect to observe a banding pattern at 46 kDa. Abcam welcomes customer feedback and would appreciate any comments regarding this product and the data presented above.



Immunohistochemistry (Formalin/PFA-fixed paraffin-embedded sections) - Anti-Asialoglycoprotein Receptor 1/HL-1 antibody (ab88042)

IHC image of ab88042 staining in human liver formalin fixed paraffin embedded tissue section, performed on a Leica Bond™ system using the standard protocol F. The section was pre-treated using heat mediated antigen retrieval with sodium citrate buffer (pH6, epitope retrieval solution 1) for 20 mins. The section was then incubated with ab88042, 5µg/ml, for 15 mins at room temperature and detected using an HRP conjugated compact polymer system. DAB was used as the chromogen. The section was then counterstained with haematoxylin and mounted with DPX.

For other IHC staining systems (automated and non-automated) customers should optimize variable parameters such as antigen retrieval conditions, primary antibody concentration and antibody incubation times.

### **Our Abpromise to you: Quality guaranteed and expert technical support**

---

- Replacement or refund for products not performing as stated on the datasheet
- Valid for 12 months from date of delivery
- Response to your inquiry within 24 hours
  
- We provide support in Chinese, English, French, German, Japanese and Spanish
- Extensive multi-media technical resources to help you
- We investigate all quality concerns to ensure our products perform to the highest standards

If the product does not perform as described on this datasheet, we will offer a refund or replacement. For full details of the Abpromise, please visit <https://www.abcam.co.jp/abpromise> or contact our technical team.

### **Terms and conditions**

---

- Guarantee only valid for products bought direct from Abcam or one of our authorized distributors