




# Anti-ASH1L antibody [ASH5H03] ab50981

**3 References** [画像数 1](#)

### 製品の概要

製品名	Anti-ASH1L antibody [ASH5H03]
製品の詳細	Mouse monoclonal [ASH5H03] to ASH1L
由来種	Mouse
アプリケーション	<b>適用あり:</b> WB
種交差性	<b>交差種:</b> Recombinant fragment <b>交差が予測される動物種:</b> Human 
免疫原	Recombinant fragment corresponding to Human ASH1L aa 1611-1728. Sequence: IGSCRVSNPNSSGRKKLTDSPGLFSAQDTSNRLHRKESLPS NERAVQTL AGSQPTSDKPSQRPSESTNCSPTKRSSSESTSSSTVNGVPSR SPRLVASG DDSVDSLLQRMVQNEDE <div>  <a href="#">Run BLAST with</a>  <a href="#">Run BLAST with</a> </div>
特記事項	<p>The Life Science industry has been in the grips of a reproducibility crisis for a number of years. Abcam is leading the way in addressing this with our range of recombinant monoclonal antibodies and knockout edited cell lines for gold-standard validation. Please check that this product meets your needs before purchasing.</p> <p>If you have any questions, special requirements or concerns, please send us an inquiry and/or contact our Support team ahead of purchase. Recommended alternatives for this product can be found below, along with publications, customer reviews and Q&amp;As</p>

### 製品の特性

製品の状態	Liquid
保存方法	Shipped at 4°C. Store at +4°C short term (1-2 weeks). Upon delivery aliquot. Store at -20°C long term.
バッファー	pH: 7.40 Preservative: 0.05% Sodium azide Constituents: 0.812% Sodium chloride, 0.1312% Sodium phosphate, 0.0225% Potassium chloride, 1% BSA, 0.03% Potassium phosphate, PBS
精製度	Protein G purified

特記事項(精製)	ab50981 was purified using protein G column chromatography from culture supernatant of hybridoma cultured in a medium containing bovine IgG-depleted (approximately 95%) fetal bovine serum
ポリ/モノ	モノクローナル
クローン名	ASH5H03
アイソタイプ	IgG1

## アプリケーション

**The Abpromise guarantee** Abpromise保証は、次のテスト済みアプリケーションにおけるab50981の使用に適用されます  
 アプリケーションノートには、推奨の開始希釈率がありますが、適切な希釈率につきましてはご検討ください。

アプリケーション	Abreviews	特記事項
WB		

## 追加情報

Dot: Use at an assay dependent dilution.

WB: Use at an assay dependent dilution. Predicted molecular weight: 330 kDa.

This antibody has only been tested in WB against the recombinant fragment used as immunogen.  
 We have no data on the detection of endogenous protein.

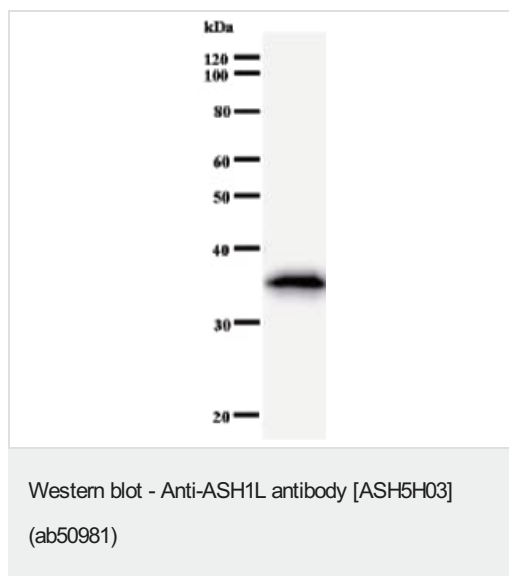
Not yet tested in other applications.

Optimal dilutions/concentrations should be determined by the end user.

## ターゲット情報

機能	Histone methyltransferase. Probably methylates 'Lys-4' of histone H3, a specific tag for epigenetic transcriptional activation.
組織特異性	Widely expressed, with highest level in brain, heart and kidney.
配列類似性	Belongs to the histone-lysine methyltransferase family. SET2 subfamily. Contains 3 A.T hook DNA-binding domains. Contains 1 AWS domain. Contains 1 BAH domain. Contains 1 bromo domain. Contains 1 PHD-type zinc finger. Contains 1 post-SET domain. Contains 1 SET domain.
細胞内局在	Nucleus. Cell junction > tight junction. Chromosome. The relevance of tight junction localization is however unclear.

## 画像



Anti-ASH1L antibody [ASH5H03] (ab50981) + Recombinant ASH1L (immunogen)

**Predicted band size:** 330 kDa

**Observed band size:** 35 kDa

This antibody has only been tested in WB against the recombinant fragment used as immunogen. We have no data on the detection of endogenous protein.

**Please note:** All products are "FOR RESEARCH USE ONLY. NOT FOR USE IN DIAGNOSTIC PROCEDURES"

### Our Abpromise to you: Quality guaranteed and expert technical support

- Replacement or refund for products not performing as stated on the datasheet
- Valid for 12 months from date of delivery
- Response to your inquiry within 24 hours
- We provide support in Chinese, English, French, German, Japanese and Spanish
- Extensive multi-media technical resources to help you
- We investigate all quality concerns to ensure our products perform to the highest standards

If the product does not perform as described on this datasheet, we will offer a refund or replacement. For full details of the Abpromise, please visit <https://www.abcam.co.jp/abpromise> or contact our technical team.

### Terms and conditions

- Guarantee only valid for products bought direct from Abcam or one of our authorized distributors