

# Anti-ASF1 A+B antibody ab53608

[1 Abreviews](#) [1 References](#) [画像数 1](#)

### 製品の概要

製品名	Anti-ASF1 A+B antibody
製品の詳細	Rabbit polyclonal to ASF1 A+B
由来種	Rabbit
アプリケーション	<b>適用あり:</b> WB
種交差性	<b>交差種:</b> Drosophila melanogaster
免疫原	Recombinant full length protein (Fruit fly (Drosophila melanogaster))
特記事項	<p>The Life Science industry has been in the grips of a reproducibility crisis for a number of years. Abcam is leading the way in addressing this with our range of recombinant monoclonal antibodies and knockout edited cell lines for gold-standard validation. Please check that this product meets your needs before purchasing.</p> <p>If you have any questions, special requirements or concerns, please send us an inquiry and/or contact our Support team ahead of purchase. Recommended alternatives for this product can be found below, along with publications, customer reviews and Q&amp;As</p>

### 製品の特性

製品の状態	Liquid
保存方法	Shipped at 4°C. Upon delivery aliquot and store at -20°C. Avoid freeze / thaw cycles.
バッファー	Constituents: 50% Glycerol, Whole serum
精製度	Whole antiserum
ポリ/モノ	ポリクローナル
アイソタイプ	IgG

### アプリケーション

**The Abpromise guarantee**      Abpromise保証は、次のテスト済みアプリケーションにおけるab53608の使用に適用されます  
 アプリケーションノートには、推奨の開始希釈率がありますが、適切な希釈率につきましてはご検討ください。

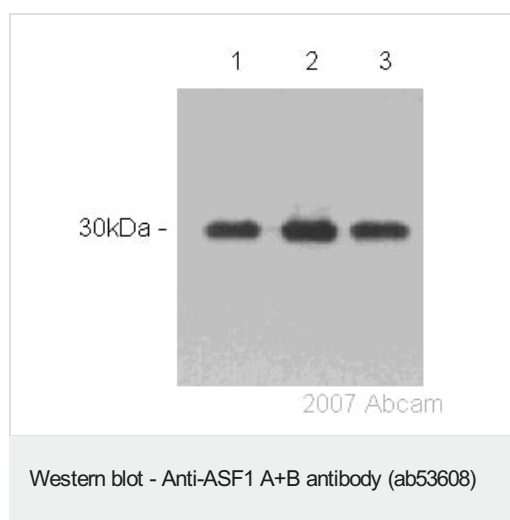
アプリケーション	Abreviews	特記事項
WB		1/2000. Predicted molecular weight: 24 kDa.

## ターゲット情報

**関連性** Asf1 (anti silencing function 1) belongs to the H3/H4 family of histone chaperones. Its function has not been fully elucidated but it is believed to be involved in ensuring a constant supply of histones at sites of nucleosome assembly. Asf1 interacts with the DNA damage checkpoint protein Rad53 and so may have a role in cell cycle regulation and DNA responses. ASF1 A and B (the two human subtypes) are the only known substrate for Tousled like kinase (TLK).

**細胞内局在** Nuclear

## 画像



**All lanes :** Anti-ASF1 A+B antibody (ab53608) at 1/2000 dilution

**All lanes :** Drosophila embryo lysate

**Predicted band size:** 24 kDa

**Observed band size:** 30 kDa

**Please note:** All products are "FOR RESEARCH USE ONLY. NOT FOR USE IN DIAGNOSTIC PROCEDURES"

## Our Abpromise to you: Quality guaranteed and expert technical support

- Replacement or refund for products not performing as stated on the datasheet
- Valid for 12 months from date of delivery
- Response to your inquiry within 24 hours
- We provide support in Chinese, English, French, German, Japanese and Spanish
- Extensive multi-media technical resources to help you
- We investigate all quality concerns to ensure our products perform to the highest standards

If the product does not perform as described on this datasheet, we will offer a refund or replacement. For full details of the Abpromise, please visit <https://www.abcam.co.jp/abpromise> or contact our technical team.

## Terms and conditions

---

- Guarantee only valid for products bought direct from Abcam or one of our authorized distributors