

# Anti-ARTD10 antibody ab70800

**1 References**    [画像数 3](#)

### 製品の概要

製品名	Anti-ARTD10 antibody
製品の詳細	Rabbit polyclonal to ARTD10
由来種	Rabbit
アプリケーション	<b>適用あり:</b> IHC-P, WB, IP
種交差性	<b>交差種:</b> Human
免疫原	Synthetic peptide corresponding to Human ARTD10 aa 300-400. NP_116178.1 Database link: <a href="#">Q53GL7</a>
ポジティブ・コントロール	WB: Whole cell lysate from HeLa cells.
特記事項	<p>The Life Science industry has been in the grips of a reproducibility crisis for a number of years. Abcam is leading the way in addressing this with our range of recombinant monoclonal antibodies and knockout edited cell lines for gold-standard validation. Please check that this product meets your needs before purchasing.</p> <p>If you have any questions, special requirements or concerns, please send us an inquiry and/or contact our Support team ahead of purchase. Recommended alternatives for this product can be found below, along with publications, customer reviews and Q&amp;As</p>

### 製品の特性

製品の状態	Liquid
保存方法	Shipped at 4°C. Upon delivery aliquot and store at -20°C. Avoid freeze / thaw cycles.
バッファー	pH: 7 Preservative: 0.09% Sodium azide Constituents: 1.815% Tris, 1.764% Sodium citrate, PBS
精製度	Immunogen affinity purified
ポリ/モノ	ポリクローナル
アイソタイプ	IgG

### アプリケーション

The Abpromise guarantee

**Abpromise保証は、** 次のテスト済みアプリケーションにおけるab70800の使用に適用されます

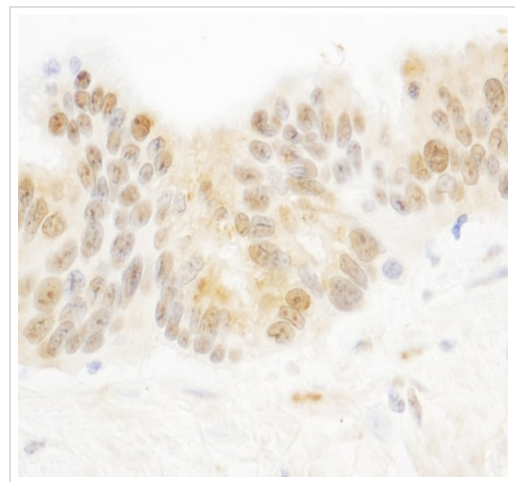
アプリケーションノートには、推奨の開始希釈率がありますが、適切な希釈率につきましてはご確認ください。

アプリケーション	Abreviews	特記事項
IHC-P		1/500 - 1/2000. Perform heat mediated antigen retrieval with citrate buffer pH 6 before commencing with IHC staining protocol.
WB		1/500 - 1/2500. Detects a band of approximately 123 kDa (predicted molecular weight: 123 kDa).
IP		Use at 1-4 µg/mg of lysate.

## ターゲット情報

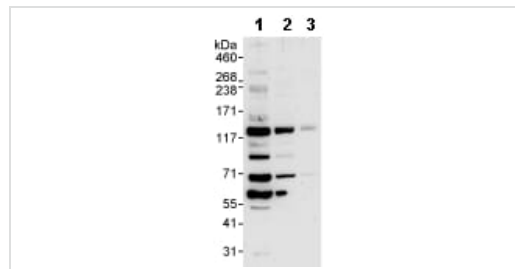
関連性	Poly (ADP ribose) polymerases (PARPs), such as PARP10, regulate gene transcription by altering chromatin organization by adding ADP ribose to histones. PARPs can also function as transcriptional cofactors
細胞内局在	Nuclear

## 画像



Immunohistochemistry (Formalin/PFA-fixed paraffin-embedded sections) analysis of human ovarian carcinoma tissue labeling ARTD10 with ab70800 at 1/1000 (1µg/ml). Detection: DAB.

Immunohistochemistry (Formalin/PFA-fixed paraffin-embedded sections) - Anti-ARTD10 antibody (ab70800)



**All lanes :** Anti-ARTD10 antibody (ab70800) at 1 µg/ml

**Lane 1 :** HeLa whole cell lysate at 50 µg

**Lane 2 :** HeLa whole cell lysate at 15 µg

**Lane 3 :** HeLa whole cell lysate at 5 µg

Western blot - Anti-ARTD10 antibody (ab70800)

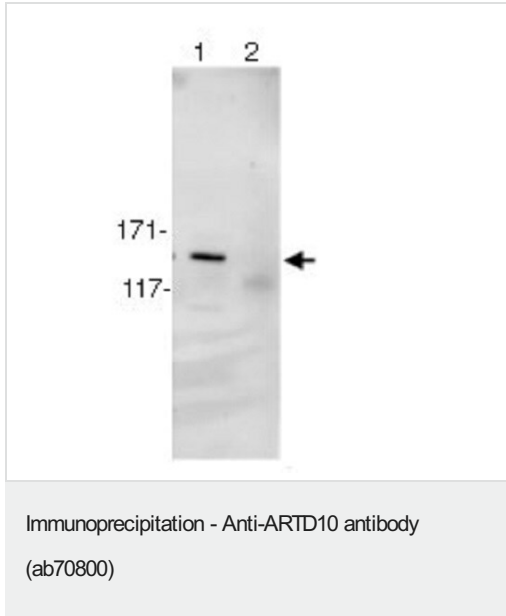
Developed using the ECL technique.

**Predicted band size:** 123 kDa

**Observed band size:** 123 kDa

**Additional bands at:** 60 kDa, 70 kDa, 90 kDa. We are unsure as to the identity of these extra bands.

**Exposure time:** 3 minutes



1mg of whole cell lysate from HeLa cells was immunoprecipitated using ab70800 at 3ug/mg of lysate (lane 1) or a control rabbit Ig (lane 2). For the subsequent western blot, 20% of immunoprecipitate was loaded per lane, and probed with ab70800 at 1ug/ml.

**Detection:** Chemiluminescence with exposure time of 30 seconds.

**Please note:** All products are "FOR RESEARCH USE ONLY. NOT FOR USE IN DIAGNOSTIC PROCEDURES"

#### Our Abpromise to you: Quality guaranteed and expert technical support

---

- Replacement or refund for products not performing as stated on the datasheet
- Valid for 12 months from date of delivery
- Response to your inquiry within 24 hours
- We provide support in Chinese, English, French, German, Japanese and Spanish
- Extensive multi-media technical resources to help you
- We investigate all quality concerns to ensure our products perform to the highest standards

If the product does not perform as described on this datasheet, we will offer a refund or replacement. For full details of the Abpromise, please visit <https://www.abcam.co.jp/abpromise> or contact our technical team.

#### Terms and conditions

---

- Guarantee only valid for products bought direct from Abcam or one of our authorized distributors