


# Anti-ARSA/ASA antibody ab74804

画像数 2

### 製品の概要

製品名	Anti-ARSA/ASA antibody
製品の詳細	Rabbit polyclonal to ARSA/ASA
由来種	Rabbit
アプリケーション	<b>適用あり:</b> IHC-P, WB
種交差性	<b>交差種:</b> Human <b>交差が予測される動物種:</b> Mouse, Rat 
免疫原	Synthetic peptide corresponding to Human ARSA/ASA (internal sequence).
ポジティブ・コントロール	Human cervix carcinoma tissue. Jurkat and COLO 205 cell extracts.
特記事項	<p>The Life Science industry has been in the grips of a reproducibility crisis for a number of years. Abcam is leading the way in addressing this with our range of recombinant monoclonal antibodies and knockout edited cell lines for gold-standard validation. Please check that this product meets your needs before purchasing.</p> <p>If you have any questions, special requirements or concerns, please send us an inquiry and/or contact our Support team ahead of purchase. Recommended alternatives for this product can be found below, along with publications, customer reviews and Q&amp;As</p>

### 製品の特性

製品の状態	Liquid
保存方法	Shipped at 4°C. Upon delivery aliquot and store at -20°C. Avoid freeze / thaw cycles.
バッファー	<p>pH: 7.40</p> <p>Preservative: 0.02% Sodium azide</p> <p>Constituents: 0.87% Sodium chloride, 50% Glycerol (glycerin, glycerine), PBS</p>
精製度	Without Mg <sup>2+</sup> and Ca <sup>2+</sup>
ポリ/モノ	Immunogen affinity purified
アイソタイプ	ポリクローナル
	IgG

### アプリケーション

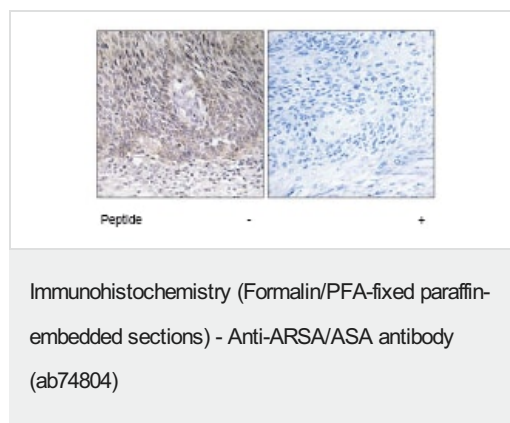
**The Abpromise guarantee**      **Abpromise保証は、** 次のテスト済みアプリケーションにおけるab74804の使用に適用されます  
 アプリケーションノートには、推奨の開始希釈率がありますが、適切な希釈率につきましてはご検討ください。

アプリケーション	Abreviews	特記事項
IHC-P		1/50 - 1/100.
WB		1/500 - 1/1000. Predicted molecular weight: 54 kDa.

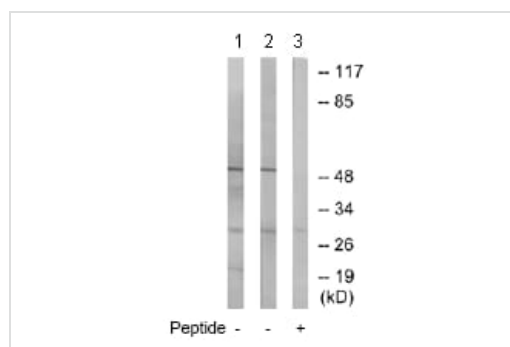
## ターゲット情報

機能	Hydrolyzes cerebroside sulfate.
関連疾患	<p>Defects in ARSA are a cause of leukodystrophy metachromatic (MLD) [MIM:250100]. MLD is a disease due to a lysosomal storage defect. It is characterized by intralysosomal storage of cerebroside-3-sulfate in neural and non-neural tissues, with a diffuse loss of myelin in the central nervous system. Progressive demyelination causes a variety of neurological symptoms, including gait disturbances, ataxias, optical atrophy, dementia, seizures, and spastic tetraparesis. Three forms of the disease can be distinguished according to the age at onset: late-infantile, juvenile and adult.</p> <p>Arylsulfatase A activity is defective in multiple sulfatase deficiency (MSD) [MIM:272200]. MSD is a disorder characterized by decreased activity of all known sulfatases. MSD is due to defects in SUMF1 resulting in the lack of post-translational modification of a highly conserved cysteine into 3-oxoalanine. It combines features of individual sulfatase deficiencies such as metachromatic leukodystrophy, mucopolysaccharidosis, chondrodysplasia punctata, hydrocephalus, ichthyosis, neurologic deterioration and developmental delay.</p>
配列類似性	Belongs to the sulfatase family.
翻訳後修飾	The conversion to 3-oxoalanine (also known as C-formylglycine, FGly), of a serine or cysteine residue in prokaryotes and of a cysteine residue in eukaryotes, is critical for catalytic activity. This post-translational modification is severely defective in multiple sulfatase deficiency (MSD).
細胞内局在	Lysosome.

## 画像



ab74804 at 1/50 dilution staining ARSA/ASA in human cervix carcinoma by Immunohistochemistry, Paraffin-embedded tissue, in the absence or presence of the immunising peptide.



Western blot - Anti-ARSA/ASA antibody (ab74804)

**All lanes :** Anti-ARSA/ASA antibody (ab74804) at 1/500 dilution

**Lane 1 :** Jurkat cell extracts

**Lane 2 :** COLO 205 cell extracts

**Lane 3 :** Jurkat cell extracts with immunising peptide at 10 µg

Lysates/proteins at 30 µg per lane.

**Predicted band size:** 54 kDa

**Observed band size:** 54 kDa

**Additional bands at:** 30 kDa. We are unsure as to the identity of these extra bands.

**Please note:** All products are "FOR RESEARCH USE ONLY. NOT FOR USE IN DIAGNOSTIC PROCEDURES"

### Our Abpromise to you: Quality guaranteed and expert technical support

- Replacement or refund for products not performing as stated on the datasheet
- Valid for 12 months from date of delivery
- Response to your inquiry within 24 hours
- We provide support in Chinese, English, French, German, Japanese and Spanish
- Extensive multi-media technical resources to help you
- We investigate all quality concerns to ensure our products perform to the highest standards

If the product does not perform as described on this datasheet, we will offer a refund or replacement. For full details of the Abpromise, please visit <https://www.abcam.co.jp/abpromise> or contact our technical team.

### Terms and conditions

- Guarantee only valid for products bought direct from Abcam or one of our authorized distributors