


### Anti-Arp2 antibody ab47654

★★★★★ **3 Abreviews** **19 References** 画像数 3

#### 製品の概要

製品名	Anti-Arp2 antibody
製品の詳細	Rabbit polyclonal to Arp2
由来種	Rabbit
特異性	Replenishment batches of our polyclonal antibody, ab47654 are tested in WB. Previous batches were additionally validated in ICC/IF and IP. These applications are still expected to work and are covered by our Abpromise guarantee. You may also be interested in our alternative recombinant antibody, <a href="#">ab129018</a> .
アプリケーション	<b>適用あり:</b> IP, WB, ICC/IF
種交差性	<b>交差種:</b> Mouse, Human, Xenopus laevis <b>交差が予測される動物種:</b> Rat, Chicken, Cow, Orangutan 
免疫原	Synthetic peptide corresponding to Human Arp2 aa 350 to the C-terminus (C terminal) conjugated to keyhole limpet haemocyanin. (Peptide available as <a href="#">ab47653</a> )
ポジティブ・コントロール	This antibody gave a positive signal in the following whole cell lysates; HeLa (Human epithelial carcinoma cell line), Jurkat (Human T cell lymphoblast-like cell line), A431 (Human epithelial carcinoma cell line), HEK293 (Human embryonic kidney cell line), HepG2 (Human hepatocellular liver carcinoma cell line), MCF7 (Human breast adenocarcinoma cell line), and SHSY-5Y (Human neuroblastoma cell line).
特記事項	<p>The Life Science industry has been in the grips of a reproducibility crisis for a number of years. Abcam is leading the way in addressing this with our range of recombinant monoclonal antibodies and knockout edited cell lines for gold-standard validation. Please check that this product meets your needs before purchasing.</p> <p>If you have any questions, special requirements or concerns, please send us an inquiry and/or contact our Support team ahead of purchase. Recommended alternatives for this product can be found below, along with publications, customer reviews and Q&amp;As</p>

#### 製品の特性

製品の状態	Liquid
保存方法	Shipped at 4°C. Store at +4°C short term (1-2 weeks). Upon delivery aliquot. Store at -20°C or -80°C. Avoid freeze / thaw cycle.

## バッファー

pH: 7.40  
Preservative: 0.02% Sodium azide  
Constituent: PBS

Batches of this product that have a concentration < 1mg/ml may have BSA added as a stabilising agent. If you would like information about the formulation of a specific lot, please contact our scientific support team who will be happy to help.

## 精製度

Immunogen affinity purified

## ポリ/モノ

ポリクローナル

## アイソタイプ

IgG

## アプリケーション

**The Abpromise guarantee**      **Abpromise保証は、次のテスト済みアプリケーションにおけるab47654の使用に適用されます**  
アプリケーションノートには、推奨の開始希釈率がありますが、適切な希釈率につきましてはご検討ください。

アプリケーション	Abreviews	特記事項
IP	★★★★★ (1)	Use at an assay dependent concentration.
WB	★★★★★ (2)	Use a concentration of 1 µg/ml. Detects a band of approximately 45 kDa (predicted molecular weight: 45 kDa).
ICC/IF		Use a concentration of 1 µg/ml.

## ターゲット情報

### 機能

Functions as ATP-binding component of the Arp2/3 complex which is involved in regulation of actin polymerization and together with an activating nucleation-promoting factor (NPF) mediates the formation of branched actin networks. Seems to contact the pointed end of the daughter actin filament.

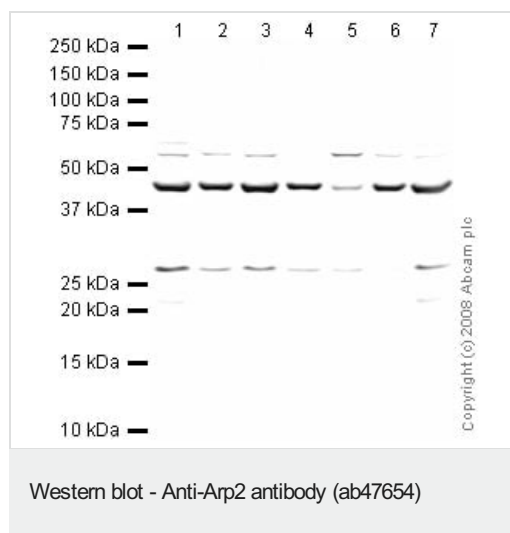
### 配列類似性

Belongs to the actin family. ARP2 subfamily.

### 細胞内局在

Cytoplasm > cytoskeleton. Cell projection.

## 画像



**All lanes :** Anti-Arp2 antibody (ab47654) at 1 µg/ml

**Lane 1 :** HeLa (Human epithelial carcinoma cell line) Whole Cell Lysate

**Lane 2 :** Jurkat (Human T cell lymphoblast-like cell line) Whole Cell Lysate

**Lane 3 :** A431 (Human epithelial carcinoma cell line) Whole Cell Lysate

**Lane 4 :** HEK293 (Human embryonic kidney cell line) Whole Cell Lysate

**Lane 5 :** HepG2 (Human hepatocellular liver carcinoma cell line) Whole Cell Lysate

**Lane 6 :** MCF7 (Human breast adenocarcinoma cell line) Whole Cell Lysate

**Lane 7 :** SHSY-5Y (Human neuroblastoma cell line) Whole Cell Lysate

Lysates/proteins at 10 µg per lane.

### Secondary

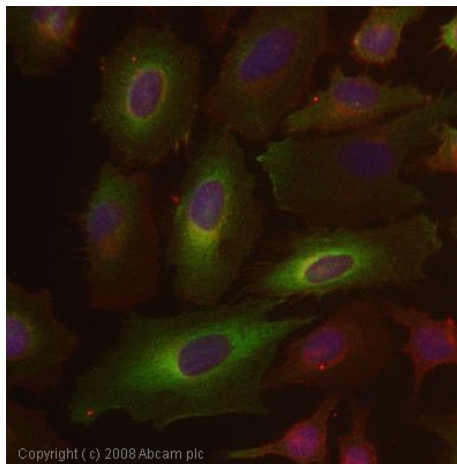
**All lanes :** IRDye 680 Conjugated Goat Anti-Rabbit IgG (H+L) at 1/10000 dilution

Performed under reducing conditions.

**Predicted band size:** 45 kDa

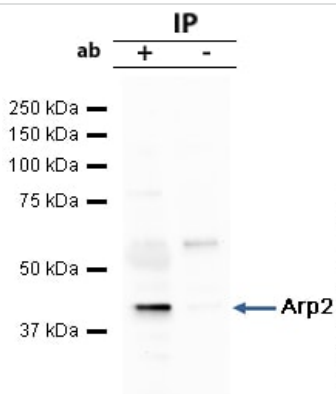
**Observed band size:** 45 kDa

**Additional bands at:** 27 kDa, 60 kDa. We are unsure as to the identity of these extra bands.



Immunocytochemistry/ Immunofluorescence - Anti-Arp2 antibody (ab47654)

ICC/IF image of ab47654 stained human HeLa cells. The cells were methanol fixed (5 min), permeabilised in 0.1% PBS-Tween (20 min) and incubated with the antibody (ab47654, 1µg/ml) for 1h at room temperature. 1%BSA / 10% normal goat serum / 0.3M glycine was used to block non-specific protein-protein interactions. The secondary antibody (green) was Alexa Fluor® 488 goat anti-rabbit IgG (H+L) used at a 1/1000 dilution for 1h. Alexa Fluor® 594 WGA was used to label plasma membranes (red). DAPI was used to stain the cell nuclei (blue). This antibody also gave a positive IF result in HEK 293, HepG2 and MCF7 cells.



Immunoprecipitation - Anti-Arp2 antibody (ab47654)

Arp2 was immunoprecipitated using 0.5mg Hek293 whole cell extract, 5µg of Rabbit polyclonal to Arp2 and 50µl of protein G magnetic beads (+). No antibody was added to the control (-). The antibody was incubated under agitation with Protein G beads for 10min, Hek293 whole cell extract lysate diluted in RIPA buffer was added to each sample and incubated for a further 10min under agitation. Proteins were eluted by addition of 40µl SDS loading buffer and incubated for 10min at 70°C; 10µl of each sample was separated on a SDS PAGE gel, transferred to a nitrocellulose membrane, blocked with 5% BSA and probed with ab47654. Secondary: Mouse monoclonal [SB62a] Secondary Antibody to Rabbit IgG light chain (HRP) ([ab99697](#)). Band: 45kDa: Arp2.

**Please note:** All products are "FOR RESEARCH USE ONLY. NOT FOR USE IN DIAGNOSTIC PROCEDURES"

## Our Abpromise to you: Quality guaranteed and expert technical support

- Replacement or refund for products not performing as stated on the datasheet
- Valid for 12 months from date of delivery
- Response to your inquiry within 24 hours
- We provide support in Chinese, English, French, German, Japanese and Spanish
- Extensive multi-media technical resources to help you

- We investigate all quality concerns to ensure our products perform to the highest standards

If the product does not perform as described on this datasheet, we will offer a refund or replacement. For full details of the Abpromise, please visit <https://www.abcam.co.jp/abpromise> or contact our technical team.

### **Terms and conditions**

---

- Guarantee only valid for products bought direct from Abcam or one of our authorized distributors