

Anti-ARL4C antibody ab122025

[4 References](#) [画像数 3](#)

製品の概要

製品名	Anti-ARL4C antibody
製品の詳細	Rabbit polyclonal to ARL4C
由来種	Rabbit
アプリケーション	適用あり: IHC-P, WB, ICC/IF
種交差性	交差種: Human
免疫原	antigen sequence corresponding to C terminal amino acids 88-192 of Human ARL4C.
ポジティブ・コントロール	Human skeletal muscle tissue. RT-4 and U-251 MG cell lysate. A-431 cells.

特記事項

The Life Science industry has been in the grips of a reproducibility crisis for a number of years. Abcam is leading the way in addressing this with our range of recombinant monoclonal antibodies and knockout edited cell lines for gold-standard validation. Please check that this product meets your needs before purchasing.

If you have any questions, special requirements or concerns, please send us an inquiry and/or contact our Support team ahead of purchase. Recommended alternatives for this product can be found below, along with publications, customer reviews and Q&As

製品の特性

製品の状態	Liquid
保存方法	Shipped at 4°C. Upon delivery aliquot and store at -20°C. Avoid repeated freeze / thaw cycles.
バッファー	pH: 7.20 Preservative: 0.02% Sodium azide Constituents: 40% Glycerol (glycerin, glycerine), 59% PBS
精製度	Immunogen affinity purified
ポリ/モノ	ポリクローナル
アイソタイプ	IgG

アプリケーション

The Abpromise guarantee

Abpromise保証は、次のテスト済みアプリケーションにおけるab122025の使用に適用されます

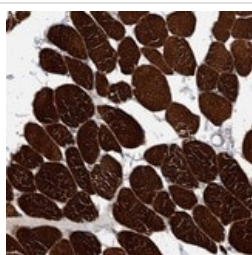
アプリケーションノートには、推奨の開始希釈率がありますが、適切な希釈率につきましてはご検討ください。

アプリケーション	Abreviews	特記事項
IHC-P		1/50 - 1/200. Perform heat mediated antigen retrieval with citrate buffer pH 6 before commencing with IHC staining protocol.
WB		Use a concentration of 0.04 - 0.4 µg/ml.
ICC/IF		Use a concentration of 0.25 - 2 µg/ml.

ターゲット情報

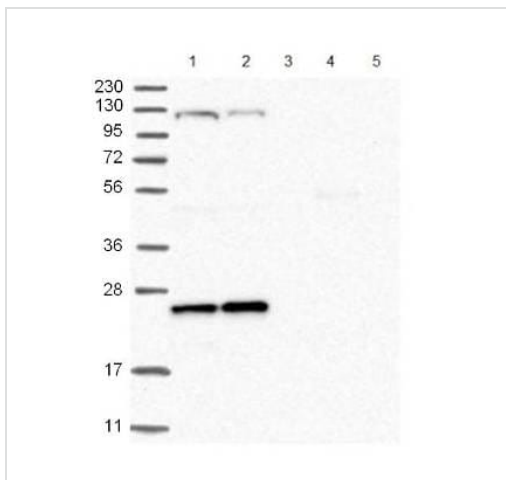
機能	Small GTP-binding protein which cycles between an inactive GDP-bound and an active GTP-bound form, and the rate of cycling is regulated by guanine nucleotide exchange factors (GEF) and GTPase-activating proteins (GAP). GTP-binding protein that does not act as an allosteric activator of the cholera toxin catalytic subunit. May be involved in transport between a perinuclear compartment and the plasma membrane, apparently linked to the ABCA1-mediated cholesterol secretion pathway. Recruits CYTH1, CYTH2, CYTH3 and CYTH4 to the plasma membrane in the GDP-bound form. Regulates the microtubule-dependent intracellular vesicular transport from early endosome to recycling endosome process.
組織特異性	Expressed in several tumor cell lines (at protein level). Expressed in lung, brain, leukocytes and placenta.
配列類似性	Belongs to the small GTPase superfamily. Arf family.
細胞内局在	Cell projection > filopodium. Cell membrane. Cytoplasm.

画像



ab122025 at 1/120 dilution staining ARL4C in paraffin-embedded Human skeletal muscle by Immunohistochemistry.

Immunohistochemistry (Formalin/PFA-fixed paraffin-embedded sections) - Anti-ARL4C antibody (ab122025)



Western blot - Anti-ARL4C antibody (ab122025)

All lanes : Anti-ARL4C antibody (ab122025) at 1/250 dilution

Lane 1 : RT-4 cell lysate.

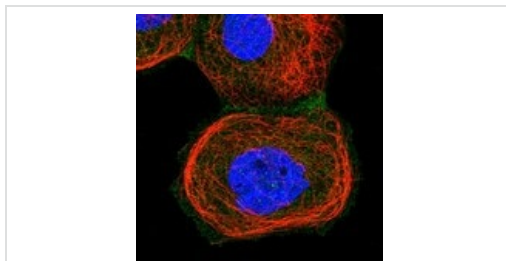
Lane 2 : U-251 MG cell lysate.

Lane 3 : Human plasma

Lane 4 : Human Liver tissue lysate.

Lane 5 : Human Tonsil tissue lysate.

Developed using the ECL technique.



Immunocytochemistry/ Immunofluorescence - Anti-ARL4C antibody (ab122025)

ab122025 at 1 µg/ml staining ARL4C (green) in PFA-fixed, Triton X-100 permeabilized, A-431 cells by Immunofluorescence.

Please note: All products are "FOR RESEARCH USE ONLY. NOT FOR USE IN DIAGNOSTIC PROCEDURES"

Our Abpromise to you: Quality guaranteed and expert technical support

- Replacement or refund for products not performing as stated on the datasheet
- Valid for 12 months from date of delivery
- Response to your inquiry within 24 hours
- We provide support in Chinese, English, French, German, Japanese and Spanish
- Extensive multi-media technical resources to help you
- We investigate all quality concerns to ensure our products perform to the highest standards

If the product does not perform as described on this datasheet, we will offer a refund or replacement. For full details of the Abpromise, please visit <https://www.abcam.co.jp/abpromise> or contact our technical team.

Terms and conditions

- Guarantee only valid for products bought direct from Abcam or one of our authorized distributors