

Anti-ARIH1 antibody ab3891

★★★★☆ [1 Abreviews](#) [5 References](#) [画像数 2](#)

製品の概要

製品名	Anti-ARIH1 antibody
製品の詳細	Goat polyclonal to ARIH1
由来種	Goat
アプリケーション	適用あり: WB
種交差性	交差種: Human
免疫原	Synthetic peptide: HEGYEKDLWEYIED , corresponding to C terminal amino acids 544-557 of Human ARIH1. Run BLAST with Run BLAST with
ポジティブ・コントロール	U937 lysate .
特記事項	<p>The Life Science industry has been in the grips of a reproducibility crisis for a number of years. Abcam is leading the way in addressing this with our range of recombinant monoclonal antibodies and knockout edited cell lines for gold-standard validation. Please check that this product meets your needs before purchasing.</p> <p>If you have any questions, special requirements or concerns, please send us an inquiry and/or contact our Support team ahead of purchase. Recommended alternatives for this product can be found below, along with publications, customer reviews and Q&As</p>

製品の特性

製品の状態	Liquid
保存方法	Shipped at 4°C. Upon delivery aliquot and store at -20°C or -80°C. Avoid repeated freeze / thaw cycles.
バッファー	pH: 7.30 Preservative: 0.02% Sodium azide Constituents: 0.5% Tris, 0.5% BSA
精製度	Immunogen affinity purified
特記事項 (精製)	Purified from goat serum by ammonium sulphate precipitation followed by antigen affinity chromatography using the immunizing peptide.
ポリ/モノ	ポリクローナル

アプリケーション

The Abpromise guarantee

Abpromise保証は、次のテスト済みアプリケーションにおけるab3891の使用に適用されます

アプリケーションノートには、推奨の開始希釈率がありますが、適切な希釈率につきましてはご検討ください。

アプリケーション	Abreviews	特記事項
WB	★★★★★ (1)	

追加情報

Western Blot: Approx 65 kDa band seen in U937 lysate [Predicted MW of approx. 61kDa according to NP_005735].

Recommended for use at 0.2-1.0µg/ml.

Not tested in other applications.

Optimal working dilutions / concentrations should be determined by the end user.

ターゲット情報

機能

Might act as an E3 ubiquitin-protein ligase, or as part of the E3 complex, which accepts ubiquitin from specific E2 ubiquitin-conjugating enzymes, such as UBE2L3/UBCM4, and then transfers it to substrates.

組織特異性

Widely expressed.

配列類似性

Belongs to the RBR family. Ariadne subfamily.

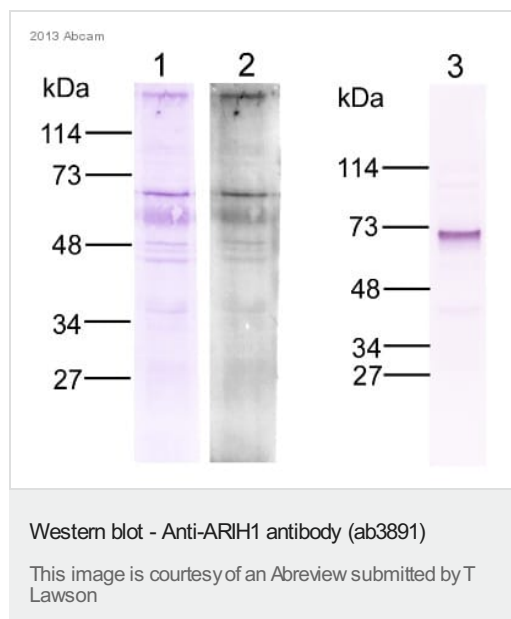
Contains 1 IBR-type zinc finger.

Contains 2 RING-type zinc fingers.

細胞内局在

Cytoplasm. Mainly cytoplasmic.

画像



All lanes : Anti-ARIH1 antibody (ab3891) at 1/1500 dilution

Lanes 1-2 : NIH3T3 whole cell lysate at 30 µg

Lane 3 : Partially purified NIH3T3 protein mixture at 10 µg

Secondary

All lanes : Alkaline Phosphatase-conjugated anti-goat IgG polyclonal at 1/15000 dilution

Performed under reducing conditions.

Observed band size: 65 kDa

Additional bands at: 45 kDa (possible non-specific binding), 50 kDa (possible non-specific binding)

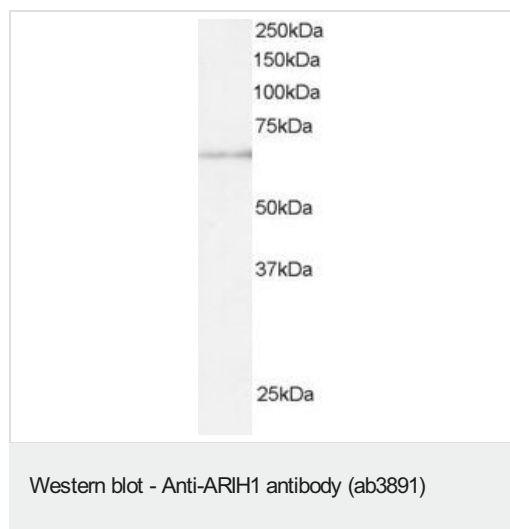
Exposure time: 15 minutes

Lanes 1 and 2 - 12% SDS-PAGE.

Lane 3 - 4-15% SDS-PAGE.

Lanes 1 and 3 - developed with colorimetric substrate.

Lane 2 - developed with ECF+.



ab3891 staining (0.5µg/ml) of U937 lysate (RIPA buffer, 30µg total protein per lane). Primary incubated for 1 hour. Detected by western blot using chemiluminescence. ab3891 staining (0.5µg/ml) of U937 lysate (RIPA buffer, 30µg total protein per lane). Primary incubated for 1 hour. Detected by western blot using chemiluminescence.

Please note: All products are "FOR RESEARCH USE ONLY. NOT FOR USE IN DIAGNOSTIC PROCEDURES"

Our Abpromise to you: Quality guaranteed and expert technical support

- Replacement or refund for products not performing as stated on the datasheet
- Valid for 12 months from date of delivery
- Response to your inquiry within 24 hours
- We provide support in Chinese, English, French, German, Japanese and Spanish
- Extensive multi-media technical resources to help you
- We investigate all quality concerns to ensure our products perform to the highest standards

If the product does not perform as described on this datasheet, we will offer a refund or replacement. For full details of the Abpromise, please visit <https://www.abcam.co.jp/abpromise> or contact our technical team.

Terms and conditions

- Guarantee only valid for products bought direct from Abcam or one of our authorized distributors