

# Anti-ARHGEF7 antibody ab175306

画像数 1

### 製品の概要

---

製品名	Anti-ARHGEF7 antibody
製品の詳細	Rabbit polyclonal to ARHGEF7
由来種	Rabbit
アプリケーション	<b>適用あり:</b> WB
種交差性	<b>交差種:</b> Mouse, Human, African green monkey
免疫原	Recombinant full length protein corresponding to Human ARHGEF7 aa 1-803. Sequence:  MNSAEQTVTWLITLGVLESPKKTISDPEGFLQASLKDGVVLC RLLERLLP GTIEKVYPEPRSESECLSNIREFLRGCGASLRLELLFPPSQP PQHLVTTI LLSASTFDANDLYQQNFNKVLSLVTLNKVTADIGLSDSV CARPSSHR IKSFDSLGSQSLHTRTSKLFQQQYRSLDMDNSNNQLVVRAK FNFQQTNE DELSFSKGDVIHVTRVEEGGWEGTLNGRTGWFPSNYVREVK ASEKPVSP KSGTLKSPKGFDTTAINKSYYNVVLQNILETENEYSKELQT VLSTYLRP LQTSEKLSSANISYLMGNLEEICSFQQMLVQSLEECTKLPEA QQRVGG CFLNLMPQMKTLTYCANHPSAVNVLTEHSEELGEFMETKG ASSPGILV LTTGLSKPFMRLDKYPTLLKELERHMEDYHTDRQDIQKSMAA FKNLSAQC QEVRRKKELELQILTEAIRNWEQDDIKTLGNVTYMSQVLIQC AGSEEKNE RYLLLFPNVLLMLSASPRMSGFIYQGKLPPTGMTITKLEDE NHRNAFEI SGSMIERILVSCNNQDLQEWVEHLQKQTKVTSVGNPTIKPH SVPSHTLP SH PVTSPSKHADSKPAPLTPAYHTLPHPSHHGTPHTTINWGPLE PPKT PKPWSLSCLRPAAPLRPSAALCYKEDLSKSPKTMKLLPKRK PERKPSDE

EFASRKSTAAL EEDAQILK VIEAYCTSAKTRQTLNSTWQGTDL  
LMHNVHLA  
DDDQPSLDLGRSSLSRLEPSDLS ESDYDSIWTAHSYRMG  
STSRKSCC SYISHQN

Database link: [Q14155](#)

 [Run BLAST with](#)

 [Run BLAST with](#)

## 特記事項

The Life Science industry has been in the grips of a reproducibility crisis for a number of years. Abcam is leading the way in addressing this with our range of recombinant monoclonal antibodies and knockout edited cell lines for gold-standard validation. Please check that this product meets your needs before purchasing.

If you have any questions, special requirements or concerns, please send us an inquiry and/or contact our Support team ahead of purchase. Recommended alternatives for this product can be found below, along with publications, customer reviews and Q&As

## 製品の特性

製品の状態	Liquid
保存方法	Shipped at 4°C. Store at +4°C short term (1-2 weeks). Upon delivery aliquot. Store at -20°C long term. Avoid freeze / thaw cycle.
バッファー	pH: 7.30 Preservative: 0.02% Sodium azide Constituents: 50% Glycerol, 49% PBS
精製度	Protein A purified
ポリ/モノ	ポリクローナル
アイソタイプ	IgG

## アプリケーション

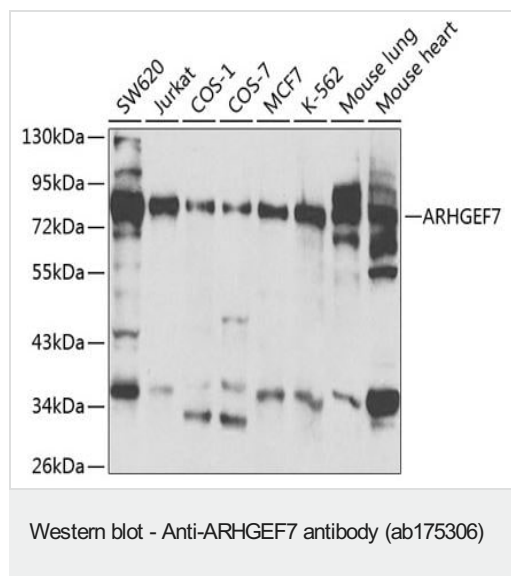
**The Abpromise guarantee** [Abpromise保証は、次のテスト済みアプリケーションにおけるab175306の使用に適用されます](#)  
アプリケーションノートには、推奨の開始希釈率がありますが、適切な希釈率につきましてはご検討ください。

アプリケーション	Abreviews	特記事項
WB		1/500 - 1/2000. Predicted molecular weight: 90 kDa.

## ターゲット情報

機能	Acts as a RAC1 guanine nucleotide exchange factor (GEF) and can induce membrane ruffling. May function as a positive regulator of apoptosis. May function in cell migration.
配列類似性	Contains 1 CH (calponin-homology) domain. Contains 1 DH (DBL-homology) domain. Contains 1 PH domain. Contains 1 SH3 domain.

## 画像



**All lanes :** Anti-ARHGEF7 antibody (ab175306) at 1/500 dilution

**Lane 1 :** SW620 cell extract

**Lane 2 :** Jurkat cell extract

**Lane 3 :** COS-1 cell extract

**Lane 4 :** COS-7 cell extract

**Lane 5 :** MCF-7 cell extract

**Lane 6 :** K-562 cell extract

**Lane 7 :** Mouse lung tissue extract

**Lane 8 :** Mouse heart tissue extract

Lysates/proteins at 25 µg per lane.

### Secondary

**All lanes :** HRP Goat AntiRabbit IgG at 1/10000 dilution

**Predicted band size:** 90 kDa

**Please note:** All products are "FOR RESEARCH USE ONLY. NOT FOR USE IN DIAGNOSTIC PROCEDURES"

## Our Abpromise to you: Quality guaranteed and expert technical support

- Replacement or refund for products not performing as stated on the datasheet
- Valid for 12 months from date of delivery
- Response to your inquiry within 24 hours
- We provide support in Chinese, English, French, German, Japanese and Spanish
- Extensive multi-media technical resources to help you
- We investigate all quality concerns to ensure our products perform to the highest standards

If the product does not perform as described on this datasheet, we will offer a refund or replacement. For full details of the Abpromise, please visit <https://www.abcam.co.jp/abpromise> or contact our technical team.

## Terms and conditions

- Guarantee only valid for products bought direct from Abcam or one of our authorized distributors