



# Anti-ARHGEF5 antibody ab42695

画像数 1

### 製品の概要

製品名	Anti-ARHGEF5 antibody
製品の詳細	Goat polyclonal to ARHGEF5
由来種	Goat
アプリケーション	<b>適用あり:</b> WB
種交差性	<b>交差種:</b> Human
免疫原	Synthetic peptide: C-DKEIDQNSQQEE , corresponding to Internal sequence amino acids 476-487 of Human ARHGEF5  <a href="#">Run BLAST with</a>  <a href="#">Run BLAST with</a>

特記事項	<p>The Life Science industry has been in the grips of a reproducibility crisis for a number of years. Abcam is leading the way in addressing this with our range of recombinant monoclonal antibodies and knockout edited cell lines for gold-standard validation. Please check that this product meets your needs before purchasing.</p> <p>If you have any questions, special requirements or concerns, please send us an inquiry and/or contact our Support team ahead of purchase. Recommended alternatives for this product can be found below, along with publications, customer reviews and Q&amp;As</p>
------	---

### 製品の特性

製品の状態	Liquid
保存方法	Shipped at 4°C. Upon delivery aliquot and store at -20°C. Avoid freeze / thaw cycles.
バッファー	pH: 7.30 Preservative: 0.02% Sodium azide Constituent: 0.5% BSA
精製度	Immunogen affinity purified
特記事項(精製)	Purified from goat serum by ammonium sulphate precipitation followed by antigen affinity chromatography using the immunizing peptide.
ポリ/モノ	ポリクローナル
アイソタイプ	IgG

## アプリケーション

**The Abpromise guarantee** Abpromise保証は、 次のテスト済みアプリケーションにおけるab42695の使用に適用されます  
アプリケーションノートには、推奨の開始希釈率がありますが、適切な希釈率につきましてはご確認ください。

アプリケーション	Abreviews	特記事項
WB		

### 追加情報

Peptide ELISA: Antibody detection limit dilution 1:16,000.  
WB: Use at a concentration of 0.1 - 0.3 µg/ml. Predicted molecular weight: 177 kDa. Approx 170kDa band observed in Human HeLa lysates  
  
Not yet tested in other applications.  
Optimal dilutions/concentrations should be determined by the end user.

## ターゲット情報

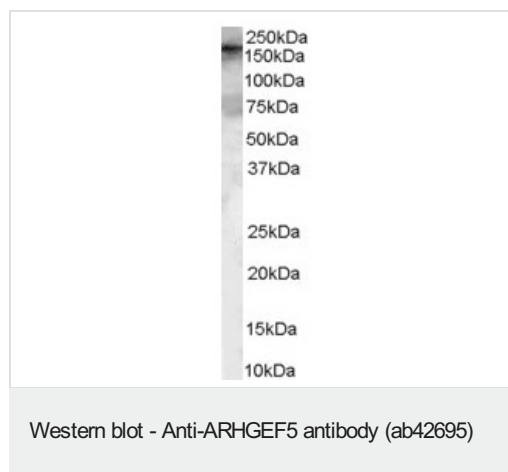
### 組織特異性

Mainly expressed in kidney, liver, pancreas, lung and placenta.

### 配列類似性

Contains 1 DH (DBL-homology) domain.  
Contains 1 PH domain.  
Contains 1 SH3 domain.

## 画像



Anti-ARHGEF5 antibody (ab42695) at 0.1 µg/ml + HeLa Lysate  
(35µg protein in RIPA buffer)

**Predicted band size:** 177 kDa

**Observed band size:** 170 kDa

Primary incubation was 1 hour. Detected by chemiluminescence.

**Please note:** All products are "FOR RESEARCH USE ONLY. NOT FOR USE IN DIAGNOSTIC PROCEDURES"

## Our Abpromise to you: Quality guaranteed and expert technical support

- Replacement or refund for products not performing as stated on the datasheet
- Valid for 12 months from date of delivery
- Response to your inquiry within 24 hours

- We provide support in Chinese, English, French, German, Japanese and Spanish
- Extensive multi-media technical resources to help you
- We investigate all quality concerns to ensure our products perform to the highest standards

If the product does not perform as described on this datasheet, we will offer a refund or replacement. For full details of the Abpromise, please visit <https://www.abcam.co.jp/abpromise> or contact our technical team.

#### **Terms and conditions**

---

- Guarantee only valid for products bought direct from Abcam or one of our authorized distributors