


Anti-ARHGEF3 antibody ab154263

1 References [画像数 3](#)

医薬用外劇物

製品の概要

製品名	Anti-ARHGEF3 antibody
製品の詳細	Rabbit polyclonal to ARHGEF3
由来種	Rabbit
アプリケーション	適用あり: WB, IHC-P, ICC/IF
種交差性	交差種: Human 交差が予測される動物種: Mouse, Rat, Chicken 
免疫原	Recombinant fragment, corresponding to a region within amino acids 81-337 of Human ARHGEF3 (Uniprot ID: Q9NR81).
ポジティブ・コントロール	NT2D1 and MCF7 whole cell lysate; MCF7 cells; Human hepatoma tissue.
特記事項	<p>The Life Science industry has been in the grips of a reproducibility crisis for a number of years. Abcam is leading the way in addressing this with our range of recombinant monoclonal antibodies and knockout edited cell lines for gold-standard validation. Please check that this product meets your needs before purchasing.</p> <p>If you have any questions, special requirements or concerns, please send us an inquiry and/or contact our Support team ahead of purchase. Recommended alternatives for this product can be found below, along with publications, customer reviews and Q&As</p>

製品の特性

製品の状態	Liquid
保存方法	Shipped at 4°C. Upon delivery aliquot. Store at -20°C or -80°C. Avoid freeze / thaw cycle.
バッファー	pH: 7.00 Preservative: 0.01% Thimerosal (merthiolate) Constituents: 1.21% Tris, 0.75% Glycine, 20% Glycerol (glycerin, glycerine)
精製度	Immunogen affinity purified
ポリ/モノ	ポリクローナル
アイソタイプ	IgG

アプリケーション

The Abpromise guarantee Abpromise保証は、次のテスト済みアプリケーションにおけるab154263の使用に適用されます
アプリケーションノートには、推奨の開始希釈率がありますが、適切な希釈率につきましてはご確認ください。

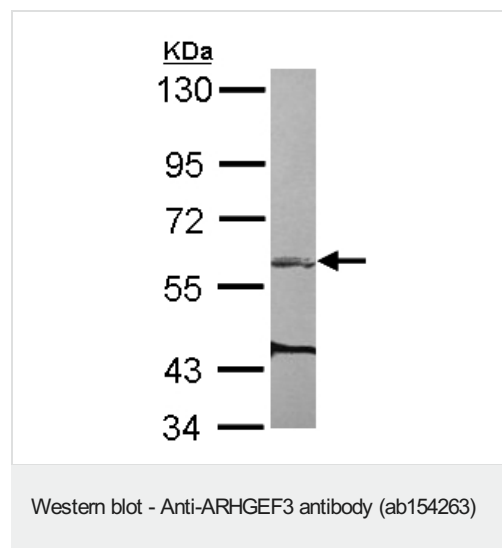
アプリケーション	Abreviews	特記事項
WB		1/500 - 1/3000. Predicted molecular weight: 60 kDa.
IHC-P		1/100 - 1/1000. Perform heat mediated antigen retrieval with citrate buffer pH 6 before commencing with IHC staining protocol.
ICC/IF		1/100 - 1/1000.

ターゲット情報

関連性 Rho GTPases play a fundamental role in numerous cellular processes that are initiated by extracellular stimuli that work through G protein coupled receptors. ARHGEF3 encodes a guanine nucleotide exchange factor, which specifically activates two members of the Rho GTPase family: RHOA and RHOB, both of which have a role in bone cell biology. It has been identified that genetic variation in ARHGEF3 plays a role in the determination of bone mineral density (BMD), suggesting a role in postmenopausal osteoporosis.

細胞内局在 Cytoplasmic

画像

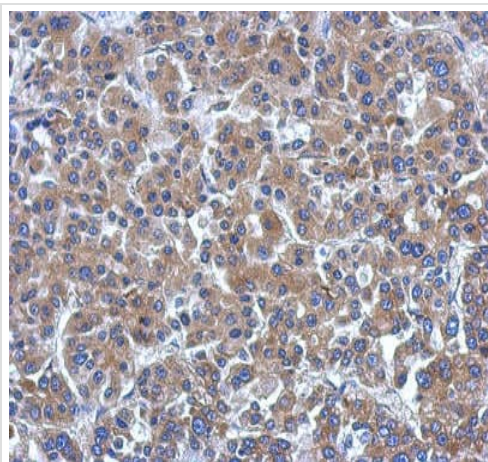


Anti-ARHGEF3 antibody (ab154263) at 1/2000 dilution + MCF7 whole cell lysate at 30 µg

Predicted band size: 60 kDa

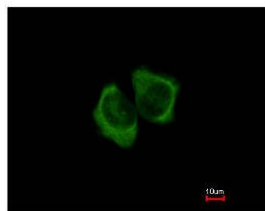
7.5% SDS PAGE

Blocking 5% non-fat milk

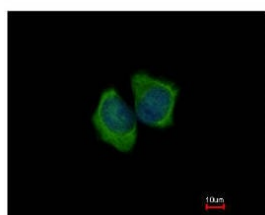


Immunohistochemical analysis of paraffin-embedded Human hepatoma tissue labeling ARHGEF3 with ab154263 at 1/500 dilution.

Immunohistochemistry (Formalin/PFA-fixed paraffin-embedded sections) - Anti-ARHGEF3 antibody (ab154263)



Immunofluorescent analysis of methanol-fixed MCF7 cells labeling ARHGEF3 with ab154263 at 1/500 dilution. Lower image shows cells co-stained with Hoechst 33342.



Immunocytochemistry/ Immunofluorescence - Anti-ARHGEF3 antibody (ab154263)

Please note: All products are "FOR RESEARCH USE ONLY. NOT FOR USE IN DIAGNOSTIC PROCEDURES"

Our Promise to you: Quality guaranteed and expert technical support

- Replacement or refund for products not performing as stated on the datasheet
- Valid for 12 months from date of delivery
- Response to your inquiry within 24 hours

- We provide support in Chinese, English, French, German, Japanese and Spanish
- Extensive multi-media technical resources to help you
- We investigate all quality concerns to ensure our products perform to the highest standards

If the product does not perform as described on this datasheet, we will offer a refund or replacement. For full details of the Abpromise, please visit <https://www.abcam.co.jp/abpromise> or contact our technical team.

Terms and conditions

- Guarantee only valid for products bought direct from Abcam or one of our authorized distributors