


Anti-Aquaporin 2 (phospho S256) antibody ab111346

★★★★★ [2 Abreviews](#) [4 References](#) [画像数 1](#)

製品の概要

製品名	Anti-Aquaporin 2 (phospho S256) antibody
製品の詳細	Rabbit polyclonal to Aquaporin 2 (phospho S256)
由来種	Rabbit
アプリケーション	適用あり: IHC-P
種交差性	交差種: Human 交差が予測される動物種: Mouse, Rat 
免疫原	Synthetic peptide corresponding to Human Aquaporin 2 (phospho S256).
ポジティブ・コントロール	Human brain tissue.
特記事項	<p>The Life Science industry has been in the grips of a reproducibility crisis for a number of years. Abcam is leading the way in addressing this with our range of recombinant monoclonal antibodies and knockout edited cell lines for gold-standard validation. Please check that this product meets your needs before purchasing.</p> <p>If you have any questions, special requirements or concerns, please send us an inquiry and/or contact our Support team ahead of purchase. Recommended alternatives for this product can be found below, along with publications, customer reviews and Q&As</p>

製品の特性

製品の状態	Liquid
保存方法	Shipped at 4°C. Store at -20°C. Stable for 12 months at -20°C.
バッファー	<p>pH: 7</p> <p>Preservative: 0.02% Sodium azide</p> <p>Constituents: 49.1% PBS, 50% Glycerol, 0.88% Sodium chloride</p>
精製度	PBS (without Mg ²⁺ and Ca ²⁺)
特記事項 (精製)	Immunogen affinity purified
ポリ/モノ	<p>ab111346 was affinity-purified from Rabbit antiserum by affinity-chromatography using epitope-specific phosphopeptide. The antibody against non-phosphopeptide was removed by chromatography using non-phosphopeptide corresponding to the phosphorylation.</p> <p>ポリクローナル</p>

アプリケーション

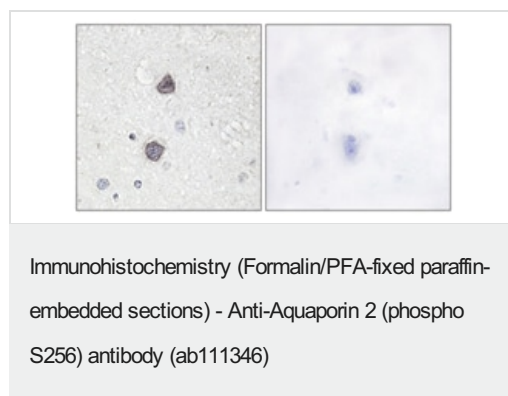
The Abpromise guarantee Abpromise保証は、 次のテスト済みアプリケーションにおけるab111346の使用に適用されます
アプリケーションノートには、推奨の開始希釈率がありますが、適切な希釈率につきましてはご検討ください。

アプリケーション	Abreviews	特記事項
IHC-P		1/50 - 1/100. Perform heat mediated antigen retrieval with citrate buffer pH 6 before commencing with IHC staining protocol.

ターゲット情報

機能	Forms a water-specific channel that provides the plasma membranes of renal collecting duct with high permeability to water, thereby permitting water to move in the direction of an osmotic gradient.
組織特異性	Expressed in renal collecting tubules.
関連疾患	Diabetes insipidus, nephrogenic, autosomal
配列類似性	Belongs to the MIP/aquaporin (TC 1.A.8) family.
ドメイン	Aquaporins contain two tandem repeats each containing three membrane-spanning domains and a pore-forming loop with the signature motif Asn-Pro-Ala (NPA).
翻訳後修飾	Ser-256 phosphorylation is necessary and sufficient for expression at the apical membrane. Endocytosis is not phosphorylation-dependent.
細胞内局在	Apical cell membrane. Basolateral cell membrane. Cytoplasmic vesicle membrane. Golgi apparatus, trans-Golgi network membrane. Shuttles from vesicles to the apical membrane. Vasopressin-regulated phosphorylation is required for translocation to the apical cell membrane. PLEKHA8/FAPP2 is required to transport AQP2 from the TGN to sites where AQP2 is phosphorylated.

画像



ab111346 at 1/50 dilution staining Aquaporin 2 in Paraffin-embedded Human Brain tissue by Immunohistochemistry. The image on the right is treated with the synthesized phosphopeptide.

Please note: All products are "FOR RESEARCH USE ONLY. NOT FOR USE IN DIAGNOSTIC PROCEDURES"

Our Abpromise to you: Quality guaranteed and expert technical support

- Replacement or refund for products not performing as stated on the datasheet
- Valid for 12 months from date of delivery
- Response to your inquiry within 24 hours

- We provide support in Chinese, English, French, German, Japanese and Spanish
- Extensive multi-media technical resources to help you
- We investigate all quality concerns to ensure our products perform to the highest standards

If the product does not perform as described on this datasheet, we will offer a refund or replacement. For full details of the Abpromise, please visit <https://www.abcam.co.jp/abpromise> or contact our technical team.

Terms and conditions

- Guarantee only valid for products bought direct from Abcam or one of our authorized distributors