


Anti-APOBEC2 antibody [EPR11286(B)] ab170859

リコンビナント RabMAb

画像数 8

製品の概要

製品名	Anti-APOBEC2 antibody [EPR11286(B)]
製品の詳細	Rabbit monoclonal [EPR11286(B)] to APOBEC2
由来種	Rabbit
アプリケーション	適用あり: IHC-P, WB 適用なし: ICC/IF or IP
種交差性	交差種: Human 交差が予測される動物種: Mouse, Rat 
免疫原	Synthetic peptide within Human APOBEC2 (Cysteine residue). The exact sequence is proprietary. Database link: Q9Y235
ポジティブ・コントロール	Human heart and skeletal muscle tissues; Human fetal muscle and fetal heart lysates.
特記事項	This product is a recombinant monoclonal antibody, which offers several advantages including: <ul style="list-style-type: none"> - High batch-to-batch consistency and reproducibility - Improved sensitivity and specificity - Long-term security of supply - Animal-free production For more information see here . Our RabMAb [®] technology is a patented hybridoma-based technology for making rabbit monoclonal antibodies. For details on our patents, please refer to RabMAb[®] patents .

製品の特性

製品の状態	Liquid
保存方法	Shipped at 4°C. Store at +4°C short term (1-2 weeks). Upon delivery aliquot. Store at -20°C long term. Avoid freeze / thaw cycle.
バッファー	pH: 7.2 Preservative: 0.01% Sodium azide Constituents: 9% PBS, 40% Glycerol (glycerin, glycerine), 0.05% BSA, 50% Tissue culture supernatant
精製度	Tissue culture supernatant

ポリクローナル	モノクローナル
クローン名	EPR11286(B)
アイソタイプ	IgG

アプリケーション

The Abpromise guarantee **Abpromise保証は、** 次のテスト済みアプリケーションにおけるab170859の使用に適用されず
アプリケーションノートには、推奨の開始希釈率がありますが、適切な希釈率につきましてはご検討ください。

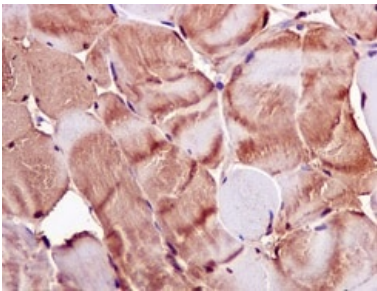
アプリケーション	Abreviews	特記事項
IHC-P		1/100 - 1/250. Perform heat mediated antigen retrieval before commencing with IHC staining protocol.
WB		1/10000 - 1/50000. Predicted molecular weight: 26 kDa.

追加情報 Is unsuitable for ICC/IF or IP.

ターゲット情報

関連性 APOBEC2 belongs to the cytidine and deoxycytidylate deaminase family. It is probable C to U editing enzyme whose physiological substrate is not yet known. It does not display detectable apoB mRNA editing and has a low intrinsic cytidine deaminase activity.

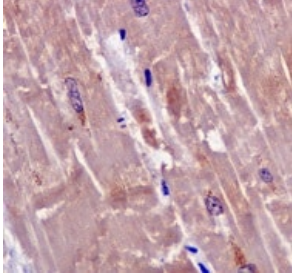
画像



Immunohistochemical analysis of Formalin-fixed, paraffin-embedded Human skeletal muscle tissue labeling APOBEC2 with ab170859 at 1/100 dilution.

Perform heat mediated antigen retrieval before commencing with IHC staining protocol.

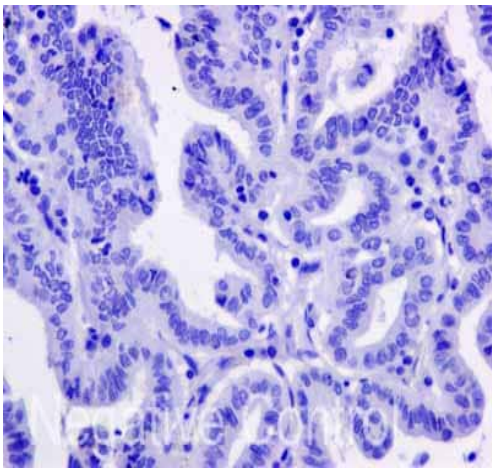
Immunohistochemistry (Formalin/PFA-fixed paraffin-embedded sections) - Anti-APOBEC2 antibody [EPR11286(B)] (ab170859)



Immunohistochemistry (Formalin/PFA-fixed paraffin-embedded sections) - Anti-APOBEC2 antibody [EPR11286(B)] (ab170859)

Immunohistochemical analysis of Formalin-fixed, paraffin-embedded Human heart tissue labeling APOBEC2 with ab170859 at 1/100 dilution.

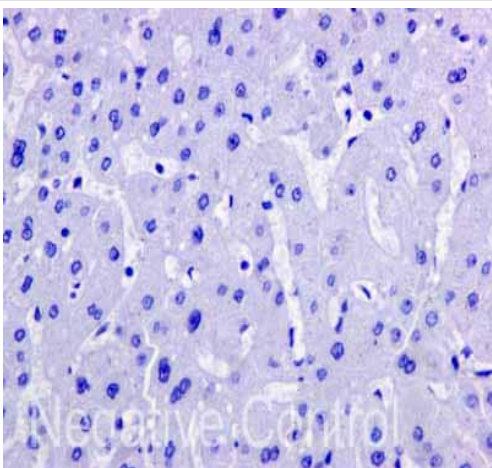
Perform heat mediated antigen retrieval before commencing with IHC staining protocol.



Immunohistochemistry (Formalin/PFA-fixed paraffin-embedded sections) - Anti-APOBEC2 antibody [EPR11286(B)] (ab170859)

ab170859 showing -ve staining in Human thyroid gland carcinoma tissue.

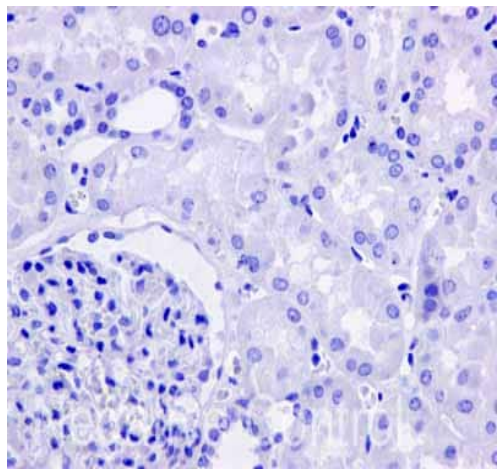
Perform heat mediated antigen retrieval before commencing with IHC staining protocol.



Immunohistochemistry (Formalin/PFA-fixed paraffin-embedded sections) - Anti-APOBEC2 antibody [EPR11286(B)] (ab170859)

ab170859 showing -ve staining in Human normal liver tissue.

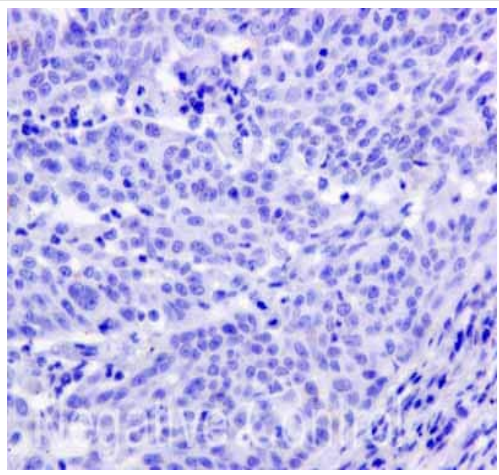
Perform heat mediated antigen retrieval before commencing with IHC staining protocol.



Immunohistochemistry (Formalin/PFA-fixed paraffin-embedded sections) - Anti-APOBEC2 antibody [EPR11286(B)] (ab170859)

ab170859 showing -ve staining in Human normal kidney tissue.

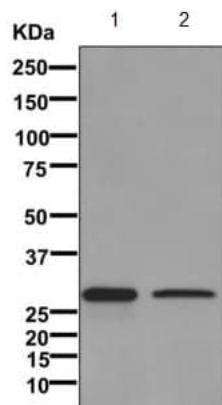
Perform heat mediated antigen retrieval before commencing with IHC staining protocol.



Immunohistochemistry (Formalin/PFA-fixed paraffin-embedded sections) - Anti-APOBEC2 antibody [EPR11286(B)] (ab170859)

ab170859 showing -ve staining in Human cervical carcinoma tissue.

Perform heat mediated antigen retrieval before commencing with IHC staining protocol.



Western blot - Anti-APOBEC2 antibody
[EPR11286(B)] (ab170859)

All lanes : Anti-APOBEC2 antibody [EPR11286(B)] (ab170859) at
1/10000 dilution

Lane 1 : Human fetal muscle lysate

Lane 2 : Human fetal heart lysate

Lysates/proteins at 10 µg per lane.

Predicted band size: 26 kDa

Why choose a recombinant antibody?



Research with confidence
Consistent and reproducible results



Long-term and scalable supply
Recombinant technology



Success from the first experiment
Confirmed specificity



Ethical standards compliant
Animal-free production

Anti-APOBEC2 antibody [EPR11286(B)] (ab170859)

Please note: All products are "FOR RESEARCH USE ONLY. NOT FOR USE IN DIAGNOSTIC PROCEDURES"

Our Abpromise to you: Quality guaranteed and expert technical support

- Replacement or refund for products not performing as stated on the datasheet
- Valid for 12 months from date of delivery
- Response to your inquiry within 24 hours
- We provide support in Chinese, English, French, German, Japanese and Spanish
- Extensive multi-media technical resources to help you
- We investigate all quality concerns to ensure our products perform to the highest standards

If the product does not perform as described on this datasheet, we will offer a refund or replacement. For full details of the Abpromise, please visit <https://www.abcam.co.jp/abpromise> or contact our technical team.

Terms and conditions

- Guarantee only valid for products bought direct from Abcam or one of our authorized distributors