


Anti-APLF antibody ab105446

画像数 2

製品の概要

製品名	Anti-APLF antibody
製品の詳細	Rabbit polyclonal to APLF
由来種	Rabbit
特異性	From Mar 2024, QC testing of replenishment batches of this polyclonal changed. All tested and expected application and reactive species combinations are still covered by our Abcam product promise. However, we no longer test all applications. For more information on a specific batch, please contact our Scientific Support who will be happy to help.
アプリケーション	適用あり: ICC/IF, WB
種交差性	交差種: Human 交差が予測される動物種: Horse, Macaque monkey, Orangutan 
免疫原	Synthetic peptide corresponding to Human APLF aa 100-200 conjugated to keyhole limpet haemocyanin. (Peptide available as ab119169)
ポジティブ・コントロール	This antibody gave a positive signal in Human Brain tissue lysate.
特記事項	The Life Science industry has been in the grips of a reproducibility crisis for a number of years. Abcam is leading the way in addressing this with our range of recombinant monoclonal antibodies and knockout edited cell lines for gold-standard validation. Please check that this product meets your needs before purchasing. If you have any questions, special requirements or concerns, please send us an inquiry and/or contact our Support team ahead of purchase. Recommended alternatives for this product can be found below, along with publications, customer reviews and Q&As

製品の特性

製品の状態	Liquid
保存方法	Shipped at 4°C. Store at +4°C short term (1-2 weeks). Upon delivery aliquot. Store at -20°C or -80°C. Avoid freeze / thaw cycle.
バッファー	pH: 7.40 Preservative: 0.02% Sodium azide Constituent: PBS

Batches of this product that have a concentration < 1mg/ml may have BSA added as a stabilising agent. If you would like information about the formulation of a specific lot, please contact our scientific support team who will be happy to help.

精製度	Immunogen affinity purified
ポリ/モノ	ポリクローナル
アイソタイプ	IgG

アプリケーション

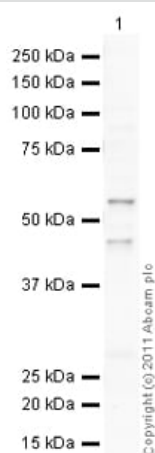
The Abpromise guarantee **Abpromise保証は、次のテスト済みアプリケーションにおけるab105446の使用に適用されます**
アプリケーションノートには、推奨の開始希釈率がありますが、適切な希釈率につきましてはご検討ください。

アプリケーション	Abreviews	特記事項
ICC/IF		Use a concentration of 5 µg/ml.
WB		Use a concentration of 1 µg/ml. Detects a band of approximately 57 kDa (predicted molecular weight: 57 kDa).

ターゲット情報

機能	Nuclease involved in single-strand and double-strand DNA break repair. Recruited to sites of DNA damage through interaction with poly(ADP-ribose), a polymeric post-translational modification synthesized transiently at sites of chromosomal damage to accelerate DNA strand break repair reactions. Displays apurinic-apyrimidinic (AP) endonuclease and 3'-5' exonuclease activities in vitro. Also able to introduce nicks at hydroxyuracil and other types of pyrimidine base damage.
配列類似性	Belongs to the APLF family. Contains 1 FHA-like domain. Contains 2 PBZ-type zinc fingers.
ドメイン	The PBZ-type zinc fingers (also named CYR) mediate non-covalent poly(ADP-ribose)-binding. Poly(ADP-ribose)-binding is dependent on the presence of zinc and promotes its recruitment to DNA damage sites. The FHA-like domain mediates interaction with XRCC1 and XRCC4.
翻訳後修飾	Poly-ADP-ribosylated. In addition to binding non covalently poly(ADP-ribose) via its PBZ-type zinc fingers, the protein is also covalently poly-ADP-ribosylated by PARP1. Phosphorylated in an ATM-dependent manner upon double-strand DNA break.
細胞内局在	Nucleus. Cytoplasm > cytosol. Localizes to DNA damage sites. Accumulates at single-strand breaks and double-strand breaks via the PBZ-type zinc fingers.

画像



Western blot - Anti-APLF antibody (ab105446)

Anti-APLF antibody (ab105446) at 1 µg/ml + Human brain tissue lysate - total protein ([ab29466](#)) at 10 µg

Secondary

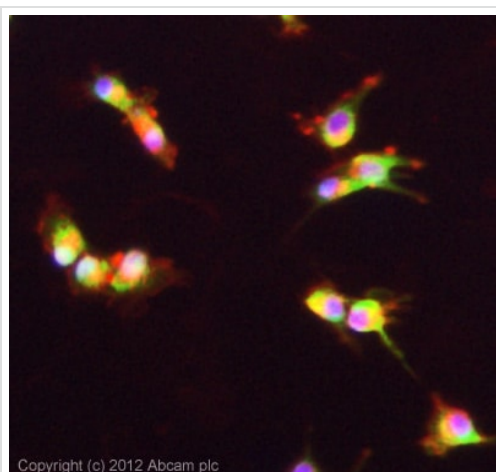
Goat Anti-Rabbit IgG H&L (HRP) preadsorbed ([ab97080](#)) at 1/5000 dilution

Predicted band size: 57 kDa

Observed band size: 57 kDa

Additional bands at: 46 kDa. We are unsure as to the identity of these extra bands.

Exposure time: 4 minutes



Immunocytochemistry/ Immunofluorescence - Anti-APLF antibody (ab105446)

ICC/IF image of ab105446 stained U87MG cells. The cells were 4% formaldehyde fixed (10 min) and then incubated in 1%BSA / 10% normal goat serum / 0.3M glycine in 0.1% PBS-Tween for 1h to permeabilise the cells and block non-specific protein-protein interactions. The cells were then incubated with the antibody (ab105446, 5µg/ml) overnight at +4°C. The secondary antibody (green) was [ab96899](#), DyLight® 488 goat anti-rabbit IgG (H+L) used at a 1/250 dilution for 1h. Alexa Fluor® 594 WGA was used to label plasma membranes (red) at a 1/200 dilution for 1h. DAPI was used to stain the cell nuclei (blue) at a concentration of 1.43µM.

Please note: All products are "FOR RESEARCH USE ONLY. NOT FOR USE IN DIAGNOSTIC PROCEDURES"

Our Abpromise to you: Quality guaranteed and expert technical support

- Replacement or refund for products not performing as stated on the datasheet
- Valid for 12 months from date of delivery
- Response to your inquiry within 24 hours
- We provide support in Chinese, English, French, German, Japanese and Spanish
- Extensive multi-media technical resources to help you
- We investigate all quality concerns to ensure our products perform to the highest standards

If the product does not perform as described on this datasheet, we will offer a refund or replacement. For full details of the Abpromise, please visit <https://www.abcam.co.jp/abpromise> or contact our technical team.

Terms and conditions

- Guarantee only valid for products bought direct from Abcam or one of our authorized distributors