

Anti-APC2 antibody ab106600

画像数 3

製品の概要

製品名	Anti-APC2 antibody
製品の詳細	Rabbit polyclonal to APC2
由来種	Rabbit
特異性	ab106600 is predicted to not cross-react with other Apc family members. At least four isoforms of Apc2 are known to exist.
アプリケーション	適用あり: ICC/IF, WB, ICC
種交差性	交差種: Human
免疫原	Synthetic peptide corresponding to Human APC2 (internal sequence). Database link: O95996
ポジティブ・コントロール	HeLa cells and cell lysate
特記事項	<p>The Life Science industry has been in the grips of a reproducibility crisis for a number of years. Abcam is leading the way in addressing this with our range of recombinant monoclonal antibodies and knockout edited cell lines for gold-standard validation. Please check that this product meets your needs before purchasing.</p> <p>If you have any questions, special requirements or concerns, please send us an inquiry and/or contact our Support team ahead of purchase. Recommended alternatives for this product can be found below, along with publications, customer reviews and Q&As</p>

製品の特性

製品の状態	Liquid
保存方法	Shipped at 4°C. Store at 4°C (stable for up to 12 months).
バッファー	pH: 7.2 Preservative: 0.02% Sodium azide Constituent: PBS
精製度	Immunogen affinity purified
ポリ/モノ	ポリクローナル
アイソタイプ	IgG

アプリケーション

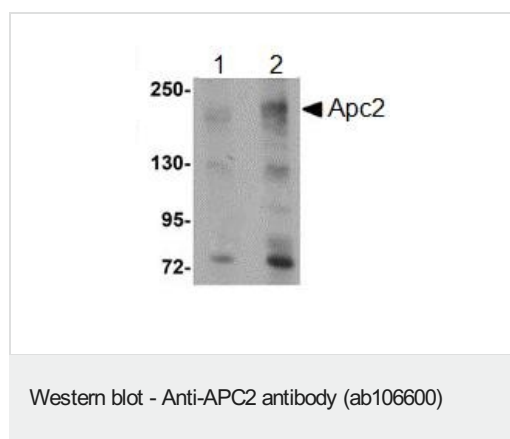
The Abpromise guarantee **Abpromise保証は、** 次のテスト済みアプリケーションにおけるab106600の使用に適用されます
 アプリケーションノートには、推奨の開始希釈率がありますが、適切な希釈率につきましてはご検討ください。

アプリケーション	Abreviews	特記事項
ICC/IF		Use a concentration of 20 µg/ml.
WB		Use a concentration of 1 - 2 µg/ml. Predicted molecular weight: 244 kDa.
ICC		Use a concentration of 5 µg/ml.

ターゲット情報

機能	Promotes rapid degradation of CTNNB1 and may function as a tumor suppressor. May function in Wnt signaling.
組織特異性	Widely expressed (at protein level). Specifically expressed in the CNS.
配列類似性	Belongs to the adenomatous polyposis coli (APC) family. Contains 6 ARM repeats.
発生段階	Expressed in fetal brain.
細胞内局在	Cytoplasm, cytoskeleton. Golgi apparatus. Cytoplasm. Cytoplasm, perinuclear region. Associated with actin filaments (PubMed:11691822). Associated with microtubule network (PubMed:10644998, PubMed:11691822).

画像



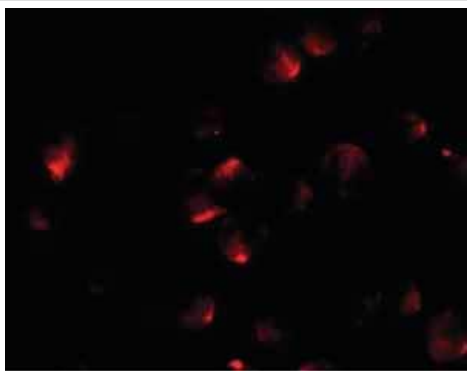
Lane 1 : Anti-APC2 antibody (ab106600) at 1 µg/ml

Lane 2 : Anti-APC2 antibody (ab106600) at 2 µg/ml

All lanes : HeLa cell lysate

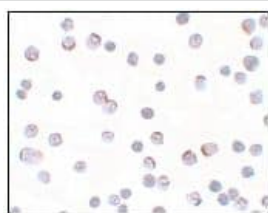
Lysates/proteins at 15 µg per lane.

Predicted band size: 244 kDa



Immunofluorescence of APC2 in HeLa cells with ab106600 at 20 ug/mL.

Immunocytochemistry/ Immunofluorescence - Anti-APC2 antibody (ab106600)



Immunocytochemical analysis of ab106600 at 5 ug/ml in HeLa cells.

Immunocytochemistry - Anti-APC2 antibody (ab106600)

Please note: All products are "FOR RESEARCH USE ONLY. NOT FOR USE IN DIAGNOSTIC PROCEDURES"

Our Abpromise to you: Quality guaranteed and expert technical support

- Replacement or refund for products not performing as stated on the datasheet
- Valid for 12 months from date of delivery
- Response to your inquiry within 24 hours
- We provide support in Chinese, English, French, German, Japanese and Spanish
- Extensive multi-media technical resources to help you
- We investigate all quality concerns to ensure our products perform to the highest standards

If the product does not perform as described on this datasheet, we will offer a refund or replacement. For full details of the Abpromise, please visit <https://www.abcam.co.jp/abpromise> or contact our technical team.

Terms and conditions

- Guarantee only valid for products bought direct from Abcam or one of our authorized distributors