

APC Anti-Ly6c antibody [HK1.4] ab93550

3 References [画像数 1](#)

製品の概要

製品名	APC Anti-Ly6c antibody [HK1.4]
製品の詳細	APC Rat monoclonal [HK1.4] to Ly6c
由来種	Rat
標識	APC. Ex: 645nm, Em: 660nm
アプリケーション	適用あり: Flow Cyt
種交差性	交差種: Mouse
免疫原	The details of the immunogen for this antibody are not available.
ポジティブ・コントロール	BALB/c splenocytes
特記事項	<p><i>In vitro addition of clone HK1.4 monoclonal antibody can increase proliferation and stimulate cytokine release.</i></p> <p>The Life Science industry has been in the grips of a reproducibility crisis for a number of years. Abcam is leading the way in addressing this with our range of recombinant monoclonal antibodies and knockout edited cell lines for gold-standard validation. Please check that this product meets your needs before purchasing.</p> <p>If you have any questions, special requirements or concerns, please send us an inquiry and/or contact our Support team ahead of purchase. Recommended alternatives for this product can be found below, along with publications, customer reviews and Q&As</p>

製品の特性

製品の状態	Liquid
保存方法	Shipped at 4°C. Store at +4°C.
バッファー	pH: 7.2 Preservative: 0.09% Sodium azide
精製度	Aqueous buffer Protein G purified
一次抗体 備考	<i>In vitro addition of clone HK1.4 monoclonal antibody can increase proliferation and stimulate cytokine release.</i>

ポリ/モノ	モノクローナル
クローン名	HK1.4
アイソタイプ	IgG2c

アプリケーション

The Abpromise guarantee **Abpromise保証は、**次のテスト済みアプリケーションにおけるab93550の使用に適用されます
 アプリケーションノートには、推奨の開始希釈率がありますが、適切な希釈率につきましてはご検討ください。

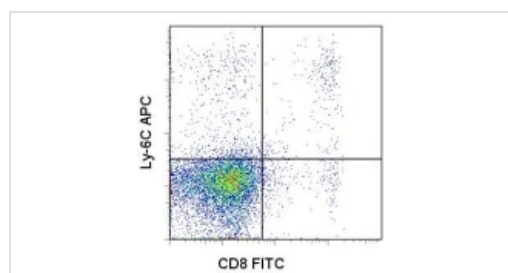
アプリケーション	Abreviews	特記事項
Flow Cyt		Use 0.125µg for 10 ⁵⁻⁸ cells. 0.125µg for 10 ⁵ to 10 ⁸ cells in a final volume of 100 µl.

ターゲット情報

関連性 Ly6C is a monocyte/macrophage and endothelial cell differentiation antigen regulated by interferon gamma, and may play a role in the development and maturation of lymphocytes. It is a member of the Ly6 multigene family of type V glycoposphatidylinositol anchored cell surface proteins. It is expressed on bone marrow cells, monocytes/macrophages, neutrophils, endothelial cells, and T cell subsets. Mice with the Ly6.2 allotype (e.g., AKR, C57BL, C57BR, C57L, DBA/2, PL, SJL, SWR, 129) have subsets of CD4+Ly6C+ and CD8+Ly6C+ cells, while Ly6.1 strains (e.g., A, BALB/c, CBA, C3H/He, DBA/1, NZB) have only CD8+Ly6C+ lymphocytes.

細胞内局在 Cell membrane; Lipid-anchor, GPI-anchor.

画像



Staining of BALB/c splenocytes with FITC anti-mouse CD8 and 0.06 µg of ab93550. Total viable cells were used for analysis.

Flow Cytometry - APC Anti-Ly6c antibody [HK1.4]
(ab93550)

Please note: All products are "FOR RESEARCH USE ONLY. NOT FOR USE IN DIAGNOSTIC PROCEDURES"

Our Abpromise to you: Quality guaranteed and expert technical support

- Replacement or refund for products not performing as stated on the datasheet
- Valid for 12 months from date of delivery
- Response to your inquiry within 24 hours

- We provide support in Chinese, English, French, German, Japanese and Spanish
- Extensive multi-media technical resources to help you
- We investigate all quality concerns to ensure our products perform to the highest standards

If the product does not perform as described on this datasheet, we will offer a refund or replacement. For full details of the Abpromise, please visit <https://www.abcam.co.jp/abpromise> or contact our technical team.

Terms and conditions

- Guarantee only valid for products bought direct from Abcam or one of our authorized distributors