

# APC Anti-CD10 antibody [CB-CALLA], prediluted ab155342

### 画像数 1

#### 製品の概要

---

製品名	APC Anti-CD10 antibody [CB-CALLA], prediluted
製品の詳細	APC Mouse monoclonal [CB-CALLA] to CD10, prediluted
由来種	Mouse
標識	APC. Ex: 645nm, Em: 660nm
アプリケーション	<b>適用あり:</b> Flow Cyt
種交差性	<b>交差種:</b> Human
免疫原	Full length protein corresponding to CD10. CALLA cells Database link: <a href="#">P08473</a>
ポジティブ・コントロール	Normal Human peripheral blood cells.
特記事項	<p>The Life Science industry has been in the grips of a reproducibility crisis for a number of years. Abcam is leading the way in addressing this with our range of recombinant monoclonal antibodies and knockout edited cell lines for gold-standard validation. Please check that this product meets your needs before purchasing.</p> <p>If you have any questions, special requirements or concerns, please send us an inquiry and/or contact our Support team ahead of purchase. Recommended alternatives for this product can be found below, along with publications, customer reviews and Q&amp;As</p>

#### 製品の特性

---

製品の状態	Liquid
保存方法	Shipped at 4°C. Store at +4°C.
バッファー	pH: 7.20 Preservative: 0.09% Sodium azide Constituents: 99% PBS, 0.2% BSA
精製度	Protein G purified
ポリ/モノ	モノクローナル
クローン名	CB-CALLA
アイソタイプ	IgG2b

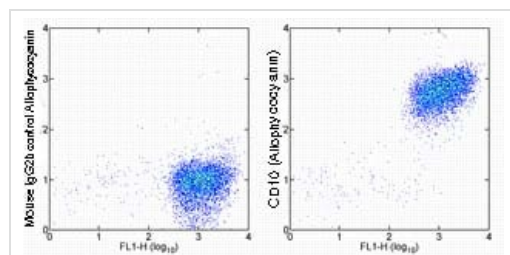
**The Abpromise guarantee** Abpromise保証は、次のテスト済みアプリケーションにおけるab155342の使用に適用されず  
 アプリケーションノートには、推奨の開始希釈率がありますが、適切な希釈率につきましてはご検討ください。

アプリケーション	Abreviews	特記事項
Flow Cyt		Use 5µl for 10 <sup>6</sup> cells. <u>ab91534</u> - Mouse monoclonal IgG2b, is suitable for use as an isotype control with this antibody.

## ターゲット情報

<b>機能</b>	Thermolysin-like specificity, but is almost confined on acting on polypeptides of up to 30 amino acids. Biologically important in the destruction of opioid peptides such as Met- and Leu-enkephalins by cleavage of a Gly-Phe bond. Able to cleave angiotensin-1, angiotensin-2 and angiotensin 1-9. Involved in the degradation of atrial natriuretic factor (ANF). Displays UV-inducible elastase activity toward skin preelastic and elastic fibers.
<b>配列類似性</b>	Belongs to the peptidase M13 family.
<b>細胞内局在</b>	Cell membrane.

## 画像



Flow Cytometry - APC Anti-CD10 antibody [CB-CALLA], prediluted (ab155342)

Flow cytometric analysis of normal Human peripheral blood cells with anti-Human CD15 FITC and either Mouse IgG2b kappa Isotype Control (left) or ab155342 (right). Cells in the granulocyte gate were used for analysis.

**Please note:** All products are "FOR RESEARCH USE ONLY. NOT FOR USE IN DIAGNOSTIC PROCEDURES"

## Our Abpromise to you: Quality guaranteed and expert technical support

- Replacement or refund for products not performing as stated on the datasheet
- Valid for 12 months from date of delivery
- Response to your inquiry within 24 hours
- We provide support in Chinese, English, French, German, Japanese and Spanish
- Extensive multi-media technical resources to help you
- We investigate all quality concerns to ensure our products perform to the highest standards

If the product does not perform as described on this datasheet, we will offer a refund or replacement. For full details of the Abpromise, please visit <https://www.abcam.co.jp/abpromise> or contact our technical team.

## **Terms and conditions**

---

- Guarantee only valid for products bought direct from Abcam or one of our authorized distributors