

Anti-AP3S1 antibody ab113099

画像数 1

製品の概要

製品名	Anti-AP3S1 antibody
製品の詳細	Rabbit polyclonal to AP3S1
由来種	Rabbit
特異性	ab113099 will detect only the two larger AP3S1 isoforms. ab113099 is not predicted to cross-react with other AP3 protein family members.
アプリケーション	適用あり: WB
種交差性	交差種: Mouse
免疫原	Synthetic peptide containing a 19 amino acid sequence from internal residues of Human AP3S1 (NP_001275).
ポジティブ・コントロール	WB: mouse kidney tissue lysate
特記事項	<p>The Life Science industry has been in the grips of a reproducibility crisis for a number of years. Abcam is leading the way in addressing this with our range of recombinant monoclonal antibodies and knockout edited cell lines for gold-standard validation. Please check that this product meets your needs before purchasing.</p> <p>If you have any questions, special requirements or concerns, please send us an inquiry and/or contact our Support team ahead of purchase. Recommended alternatives for this product can be found below, along with publications, customer reviews and Q&As</p>

製品の特性

製品の状態	Liquid
保存方法	Shipped at 4°C. Store at 4°C (stable for up to 12 months).
バッファー	pH: 7.2 Preservative: 0.02% Sodium azide Constituent: 99.98% PBS
精製度	Immunogen affinity purified
特記事項(精製)	ab113099 is purified by affinity chromatography via a peptide column.
ポリモノ	ポリクローナル
アイソタイプ	IgG

アプリケーション

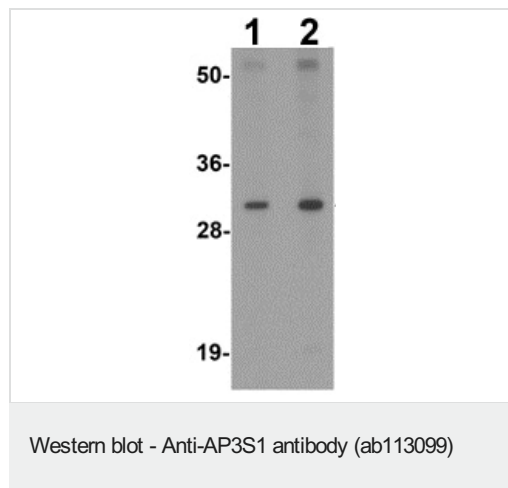
The Abpromise guarantee Abpromise保証は、次のテスト済みアプリケーションにおけるab113099の使用に適用されます
アプリケーションノートには、推奨の開始希釈率がありますが、適切な希釈率につきましてはご検討ください。

アプリケーション	Abreviews	特記事項
WB		Use a concentration of 1 - 2 µg/ml. Predicted molecular weight: 22 kDa.

ターゲット情報

機能	Part of the AP-3 complex, an adapter-related complex which is not clathrin-associated. The complex is associated with the Golgi region as well as more peripheral structures. It facilitates the budding of vesicles from the Golgi membrane and may be directly involved in trafficking to lysosomes.
組織特異性	Present in all adult tissues examined.
配列類似性	Belongs to the adaptor complexes small subunit family.
細胞内局在	Golgi apparatus. Cytoplasmic vesicle membrane. Component of the coat surrounding the cytoplasmic face of coated vesicles located at the Golgi complex.

画像



Lane 1 : Anti-AP3S1 antibody (ab113099) at 1 µg/ml

Lane 2 : Anti-AP3S1 antibody (ab113099) at 2 µg/ml

All lanes : Mouse kidney tissue lysate

Lysates/proteins at 15 µg per lane.

Predicted band size: 22 kDa

Please note: All products are "FOR RESEARCH USE ONLY. NOT FOR USE IN DIAGNOSTIC PROCEDURES"

Our Abpromise to you: Quality guaranteed and expert technical support

- Replacement or refund for products not performing as stated on the datasheet
- Valid for 12 months from date of delivery
- Response to your inquiry within 24 hours
- We provide support in Chinese, English, French, German, Japanese and Spanish

- Extensive multi-media technical resources to help you
- We investigate all quality concerns to ensure our products perform to the highest standards

If the product does not perform as described on this datasheet, we will offer a refund or replacement. For full details of the Abpromise, please visit <https://www.abcam.co.jp/abpromise> or contact our technical team.

Terms and conditions

- Guarantee only valid for products bought direct from Abcam or one of our authorized distributors