




### Anti-AP3 antibody ab115234

画像数 1

#### 製品の概要

|              |   |
|--------------|---|
| 製品名          | Anti-AP3 antibody   |
| 製品の詳細        | Goat polyclonal to AP3  |
| 由来種          | Goat  |
| アプリケーション     | 適用あり: IHC-P   |
| 種交差性         | <p>交差種: Human</p> <p>交差が予測される動物種: Mouse, Rat, Horse, Chicken, Cow, Dog, Pig, Orangutan </p>  |
| 免疫原          | <p>Synthetic peptide:</p> <p>SPSPQKRYQDTPG</p> <p>conjugated to KLH, corresponding to amino acids 686-698 of Human AP3 (NP_003929.4).</p> <p> <a href="#">Run BLAST with</a>  <a href="#">Run BLAST with</a></p>  |
| ポジティブ・コントロール | Human lung (respiratory epithelium) tissue.   |
| 特記事項         | <p>The Life Science industry has been in the grips of a reproducibility crisis for a number of years. Abcam is leading the way in addressing this with our range of recombinant monoclonal antibodies and knockout edited cell lines for gold-standard validation. Please check that this product meets your needs before purchasing.</p> <p>If you have any questions, special requirements or concerns, please send us an inquiry and/or contact our Support team ahead of purchase. Recommended alternatives for this product can be found below, along with publications, customer reviews and Q&amp;As</p> |

#### 製品の特性

|        |  |
|--------|--|
| 製品の状態  | Liquid   |
| 保存方法   | Shipped at 4°C. Store at +4°C short term (1-2 weeks). Upon delivery aliquot. Store at -20°C long term.                         |
| バッファー  | <p>pH: 7.20</p> <p>Preservative: 0.01% Sodium azide</p> <p>Constituents: 0.424% Potassium phosphate, 0.88% Sodium chloride</p> |
| 精製度    | Protein G purified   |
| ポリ/モノ  | ポリクローナル  |
| アイソタイプ | IgG  |

## アプリケーション

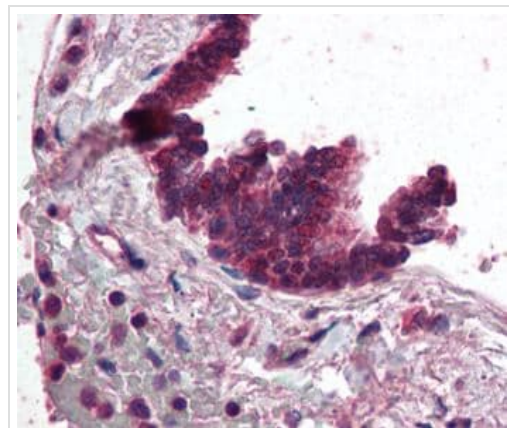
**The Abpromise guarantee** Abpromise保証は、 次のテスト済みアプリケーションにおけるab115234の使用に適用されます  
アプリケーションノートには、推奨の開始希釈率がありますが、適切な希釈率につきましてはご検討ください。

| アプリケーション | Abreviews | 特記事項   |
|----------|-----------|--|
| IHC-P    |           | Use a concentration of 2.5 µg/ml. Perform heat mediated antigen retrieval with citrate buffer pH 6 before commencing with IHC staining protocol. |

## ターゲット情報

|       |  |
|-------|--|
| 機能    | Part of the AP-3 complex, an adaptor-related complex which is not clathrin-associated. The complex is associated with the Golgi region as well as more peripheral structures. It facilitates the budding of vesicles from the Golgi membrane and may be directly involved in trafficking to lysosomes. |
| 組織特異性 | Present in all adult tissues examined with the highest levels in skeletal muscle, heart, pancreas and testis.  |
| 配列類似性 | Belongs to the adaptor complexes large subunit family.<br>Contains 11 HEAT repeats.  |
| 細胞内局在 | Cytoplasm. Golgi apparatus membrane.   |

## 画像



Human lung, respiratory epithelium tissue (formalin-fixed, paraffin-embedded) stained with ab115234 at 2.5 ug/ml followed by biotinylated anti-goat IgG secondary antibody, alkaline phosphatase-streptavidin and chromogen.

Immunohistochemistry (Formalin/PFA-fixed paraffin-embedded sections) - Anti-AP3 antibody (ab115234)

**Please note:** All products are "FOR RESEARCH USE ONLY. NOT FOR USE IN DIAGNOSTIC PROCEDURES"

## Our Abpromise to you: Quality guaranteed and expert technical support

- Replacement or refund for products not performing as stated on the datasheet

- Valid for 12 months from date of delivery
- Response to your inquiry within 24 hours
- We provide support in Chinese, English, French, German, Japanese and Spanish
- Extensive multi-media technical resources to help you
- We investigate all quality concerns to ensure our products perform to the highest standards

If the product does not perform as described on this datasheet, we will offer a refund or replacement. For full details of the Abpromise, please visit <https://www.abcam.co.jp/abpromise> or contact our technical team.

#### **Terms and conditions**

---

- Guarantee only valid for products bought direct from Abcam or one of our authorized distributors