

Anti-AP1G2 antibody ab121213

画像数 2

製品の概要

製品名	Anti-AP1G2 antibody
製品の詳細	Rabbit polyclonal to AP1G2
由来種	Rabbit
アプリケーション	適用あり: IHC-P, WB
種交差性	交差種: Human
免疫原	antigen sequence, corresponding to amino acids 586-708 of Human AP1G2.
ポジティブ・コントロール	Human colon tissue; RT 4, U251 MG, Human liver and tonsil lysates.
特記事項	<p>The Life Science industry has been in the grips of a reproducibility crisis for a number of years. Abcam is leading the way in addressing this with our range of recombinant monoclonal antibodies and knockout edited cell lines for gold-standard validation. Please check that this product meets your needs before purchasing.</p> <p>If you have any questions, special requirements or concerns, please send us an inquiry and/or contact our Support team ahead of purchase. Recommended alternatives for this product can be found below, along with publications, customer reviews and Q&As</p>

製品の特性

製品の状態	Liquid
保存方法	Shipped at 4°C. Upon delivery aliquot and store at -20°C. Avoid freeze / thaw cycles.
バッファー	pH: 7.20 Preservative: 0.02% Sodium azide Constituents: 59% PBS, 40% Glycerol (glycerin, glycerine)
精製度	Immunogen affinity purified
ポリ/モノ	ポリクローナル
アイソタイプ	IgG

アプリケーション

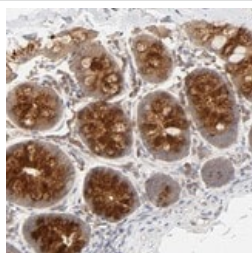
The Abpromise guarantee **Abpromise保証は、次のテスト済みアプリケーションにおけるab121213の使用に適用されます**
アプリケーションノートには、推奨の開始希釈率がありますが、適切な希釈率につきましてはご検討ください。

アプリケーション	Abreviews	特記事項
IHC-P		1/200 - 1/500. Perform heat mediated antigen retrieval with citrate buffer pH 6 before commencing with IHC staining protocol.
WB		Use a concentration of 0.04 - 0.4 µg/ml.

ターゲット情報

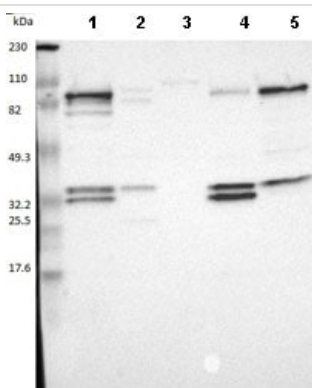
機能	May function in protein sorting in late endosomes or multivesicular bodies (MVBs). Involved in MVB-assisted maturation of hepatitis B virus (HBV).
組織特異性	Expressed in all but one (skeletal muscle) tissues examined.
配列類似性	Belongs to the adaptor complexes large subunit family. Contains 1 GAE domain.
細胞内局在	Golgi apparatus membrane. Cytoplasmic vesicle membrane. Endosome membrane. Mainly localized to perinuclear vesicular structures. Colocalizes with HBV major surface antigen L and HBV core protein C in CD63-containing compartments. Colocalizes with HBV major surface antigen L to cis-Golgi-like structures.

画像



Immunohistochemistry (Formalin/PFA-fixed paraffin-embedded sections) - Anti-AP1G2 antibody (ab121213)

ab121213 at 1/175 dilution staining AP1G2 in Paraffin-embedded Human Colon tissue by Immunohistochemistry.



Western blot - Anti-AP1G2 antibody (ab121213)

All lanes : Anti-AP1G2 antibody (ab121213) at 1/250 dilution

Lane 1 : RT 4 lysate

Lane 2 : U 251 MG lysate

Lane 3 : Human plasma lysate

Lane 4 : Human liver lysate

Lane 5 : Human tonsil lysate

Please note: All products are "FOR RESEARCH USE ONLY. NOT FOR USE IN DIAGNOSTIC PROCEDURES"

Our Abpromise to you: Quality guaranteed and expert technical support

- Replacement or refund for products not performing as stated on the datasheet
- Valid for 12 months from date of delivery
- Response to your inquiry within 24 hours

- We provide support in Chinese, English, French, German, Japanese and Spanish
- Extensive multi-media technical resources to help you
- We investigate all quality concerns to ensure our products perform to the highest standards

If the product does not perform as described on this datasheet, we will offer a refund or replacement. For full details of the Abpromise, please visit <https://www.abcam.co.jp/abpromise> or contact our technical team.

Terms and conditions

- Guarantee only valid for products bought direct from Abcam or one of our authorized distributors