

# Anti-Anterior Gradient 2 antibody [EPR3278] ab76473

リコンビナント RabMAb

★★★★★ **2 Abreviews** **17 References** **画像数 7**

### 製品の概要

製品名	Anti-Anterior Gradient 2 antibody [EPR3278]
製品の詳細	Rabbit monoclonal [EPR3278] to Anterior Gradient 2
由来種	Rabbit
アプリケーション	<b>適用あり:</b> WB, IP, IHC-P, Flow Cyt (Intra), ICC/IF
種交差性	<b>交差種:</b> Human
免疫原	Synthetic peptide within Human Anterior Gradient 2 aa 1-100. The exact sequence is proprietary.
ポジティブ・コントロール	HT-29 and MCF-7 cell lysates. Human colon tissue. Human endometrium adenocarcinoma. ICC/IF: MCF7 cells Flow Cyt (intra): HT-29 cells IP: HT-29 whole cell lysate.
特記事項	<p>This product is a recombinant monoclonal antibody, which offers several advantages including:</p> <ul style="list-style-type: none"><li>- High batch-to-batch consistency and reproducibility</li><li>- Improved sensitivity and specificity</li><li>- Long-term security of supply</li><li>- Animal-free production</li></ul> <p>For more information <a href="#">see here</a>.</p> <p>Our RabMAb<sup>®</sup> technology is a patented hybridoma-based technology for making rabbit monoclonal antibodies. For details on our patents, please refer to <a href="#">RabMAb<sup>®</sup> patents</a>.</p> <p>Mouse, Rat: We have preliminary internal testing data to indicate this antibody may not react with these species. Please contact us for more information.</p>

### 製品の特性

製品の状態	Liquid
保存方法	Shipped at 4°C. Store at +4°C short term (1-2 weeks). Upon delivery aliquot. Store at -20°C. Avoid freeze / thaw cycle.
バッファー	pH: 7.20 Preservative: 0.05% Sodium azide Constituents: 0.1% BSA, 40% Glycerol (glycerin, glycerine), 9.85% Tris glycine, 50% Tissue culture supernatant
精製度	Protein A purified

ポリ/モノ	モノクローナル
クローン名	EPR3278
アイソタイプ	IgG

## アプリケーション

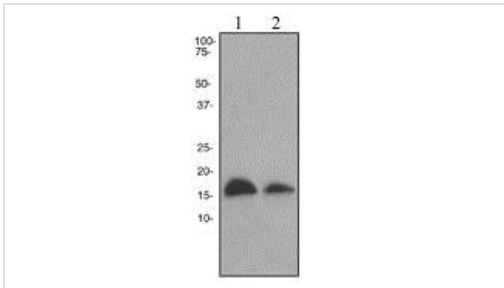
**The Abpromise guarantee**      **Abpromise保証は、次のテスト済みアプリケーションにおけるab76473の使用に適用されず**  
 アプリケーションノートには、推奨の開始希釈率がありますが、適切な希釈率につきましてはご検討ください。

アプリケーション	Abreviews	特記事項
WB		1/5000 - 1/10000. Predicted molecular weight: 20 kDa.
IP		1/20.
IHC-P	★★★★★ (1)	1/250 - 1/500. Perform heat mediated antigen retrieval before commencing with IHC staining protocol.
Flow Cyt (Intra)		1/40. <b>ab172730</b> - Rabbit monoclonal IgG, is suitable for use as an isotype control with this antibody.
ICC/IF		1/100.

## ターゲット情報

<b>機能</b>	Required for MUC2 post-transcriptional synthesis and secretion. May play a role in the production of mucus by intestinal cells (By similarity). Proto-oncogene that may play a role in cell migration, cell differentiation and cell growth.
<b>組織特異性</b>	Expressed strongly in trachea, lung, stomach, colon, prostate and small intestine. Expressed weakly in pituitary gland, salivary gland, mammary gland, bladder, appendix, ovary, fetal lung, uterus, pancreas, kidney, fetal kidney, testis, placenta, thyroid gland and in estrogen receptor (ER)-positive breast cancer cell lines.
<b>配列類似性</b>	Belongs to the AGR family.
<b>細胞内局在</b>	Secreted. Endoplasmic reticulum.

## 画像



Western blot - Anti-Anterior Gradient 2 antibody [EPR3278] (ab76473)

**All lanes** : Anti-Anterior Gradient 2 antibody [EPR3278] (ab76473) at 1/10000 dilution

**Lane 1** : HT-29 cell lysates

**Lane 2** : MCF-7 cell lysates

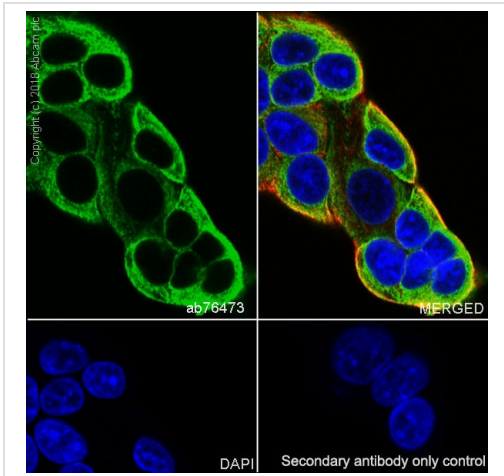
Lysates/proteins at 10 µg per lane.

**Secondary**

**All lanes** : HRP labelled goat anti-rabbit at 1/2000 dilution

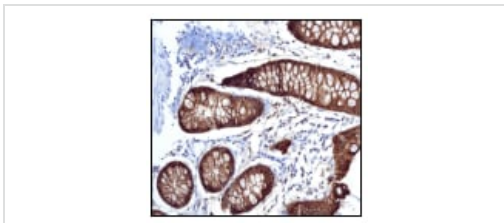
**Predicted band size:** 20 kDa

**Observed band size:** 17 kDa



Immunocytochemistry/ Immunofluorescence - Anti-Anterior Gradient 2 antibody [EPR3278] (ab76473)

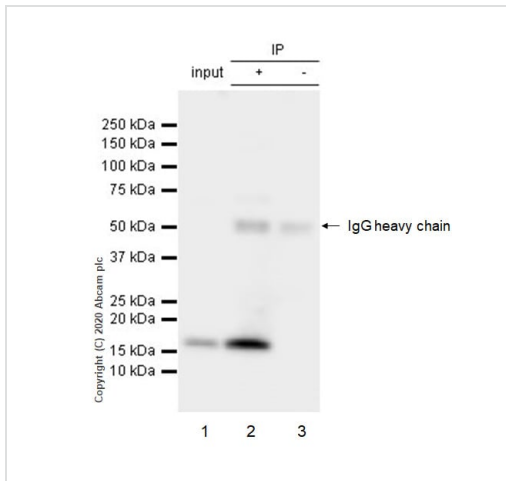
Immunocytochemistry/ Immunofluorescence analysis of MCF7 (human breast adenocarcinoma epithelial cell) cells labeling Anterior Gradient 2 with purified ab76473 at 1/100 dilution (3.5 µg/mL). Cells were fixed in 100% Methanol. Cells were counterstained with **ab195889** Anti-alpha Tubulin antibody [DM1A] - Microtubule Marker (Alexa Fluor® 594) 1/200 (2.5 µg/mL). Goat anti rabbit IgG (Alexa Fluor® 488, **ab150077**) was used as the secondary antibody at 1/1000 (2 µg/mL) dilution. DAPI (blue) was used as nuclear counterstain. **ab195889** Anti-alpha Tubulin antibody [DM1A] - Microtubule Marker (Alexa Fluor® 594) 1/200 (2.5 µg/mL) was used as the secondary antibody only control.



Immunohistochemistry (Formalin/PFA-fixed paraffin-embedded sections) - Anti-Anterior Gradient 2 antibody [EPR3278] (ab76473)

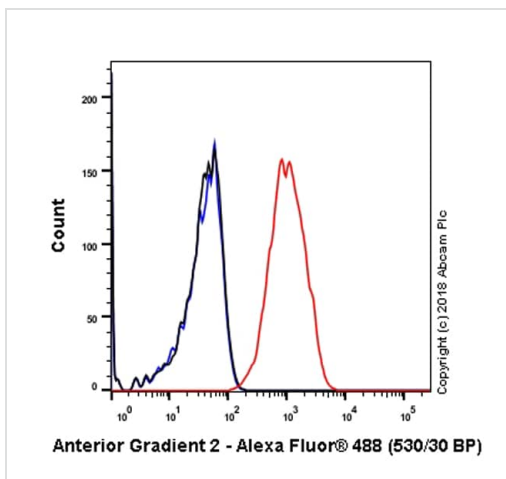
ab76473, at 1/500 dilution, staining Anterior Gradient 2 in paraffin-embedded human colon tissue by Immunohistochemistry.

Perform heat mediated antigen retrieval before commencing with IHC staining protocol.



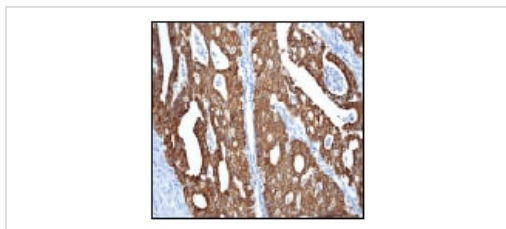
Immunoprecipitation - Anti-Anterior Gradient 2 antibody [EPR3278] (ab76473)

Purified ab76473 at 1/20 dilution (2µg) immunoprecipitating Anterior Gradient 2 in HT-29 whole cell lysate.  
 Lane 1 (input): HT-29 (Human colorectal adenocarcinoma epithelial cell) whole cell lysate 10µg  
 Lane 2 (+): ab76473 + HT-29 whole cell lysate.  
 Lane 3 (-): Rabbit monoclonal IgG (**ab172730**) instead of ab76473 in HT-29 whole cell lysate.  
 VeriBlot for IP Detection Reagent (HRP) (**ab131366**) (1/1000 dilution) was used for Western blotting.  
 Blocking Buffer and concentration: 5% NFDm/TBST.  
 Diluting buffer and concentration: 5% NFDm/TBST.  
 Observed band size: 17 kDa



Flow Cytometry (Intracellular) - Anti-Anterior Gradient 2 antibody [EPR3278] (ab76473)

Intracellular Flow Cytometry analysis of HT-29 (Human colorectal adenocarcinoma epithelial cell) cells labeling Anterior Gradient 2 with purified ab76473 at 1/40 dilution (10 µg/mL) (Red). Cells were fixed with 4% Paraformaldehyde and permeabilised with 90% Methanol. A Goat anti rabbit IgG (Alexa Fluor® 488, **ab150077**) secondary antibody was used at 1/2000. Isotype control - Rabbit monoclonal IgG (Black). Unlabeled control - Cells without incubation with primary antibody and secondary antibody (Blue).



Immunohistochemistry (Formalin/PFA-fixed paraffin-embedded sections) - Anti-Anterior Gradient 2 antibody [EPR3278] (ab76473)

ab76473, at 1/500 dilution, staining Anterior Gradient 2 in paraffin-embedded human endometrium adenocarcinoma by Immunohistochemistry.  
 Perform heat mediated antigen retrieval before commencing with IHC staining protocol.

### Why choose a recombinant antibody?



**Research with confidence**  
Consistent and reproducible results



**Long-term and scalable supply**  
Recombinant technology



**Success from the first experiment**  
Confirmed specificity



**Ethical standards compliant**  
Animal-free production

Anti-Anterior Gradient 2 antibody [EPR3278]  
(ab76473)

**Please note:** All products are "FOR RESEARCH USE ONLY. NOT FOR USE IN DIAGNOSTIC PROCEDURES"

### Our Abpromise to you: Quality guaranteed and expert technical support

---

- Replacement or refund for products not performing as stated on the datasheet
- Valid for 12 months from date of delivery
- Response to your inquiry within 24 hours
- We provide support in Chinese, English, French, German, Japanese and Spanish
- Extensive multi-media technical resources to help you
- We investigate all quality concerns to ensure our products perform to the highest standards

If the product does not perform as described on this datasheet, we will offer a refund or replacement. For full details of the Abpromise, please visit <https://www.abcam.co.jp/abpromise> or contact our technical team.

### Terms and conditions

---

- Guarantee only valid for products bought direct from Abcam or one of our authorized distributors