


### Anti-Annexin-6/ANXA6 antibody ab31026

★★★★★ [5 Abreviews](#) [16 References](#) [画像数 4](#)

#### 製品の概要

|              |   |
|--------------|---|
| 製品名          | Anti-Annexin-6/ANXA6 antibody   |
| 製品の詳細        | Rabbit polyclonal to Annexin-6/ANXA6  |
| 由来種          | Rabbit  |
| アプリケーション     | <b>適用あり:</b> WB, IHC-P  |
| 種交差性         | <b>交差種:</b> Human<br><b>交差が予測される動物種:</b> Mouse, Rat    |
| 免疫原          | Synthetic peptide within Human Annexin-6/ANXA6 aa 1-100. The exact sequence is proprietary.<br>Database link: <a href="#">P08133</a>  |
| ポジティブ・コントロール | IHC-P: Human L8 cells. Liver.   |
| 特記事項         | <p><b>This product is FOR RESEARCH USE ONLY. For commercial use, please contact <a href="mailto:partnerships@abcam.com">partnerships@abcam.com</a>.</b></p> <p>The Life Science industry has been in the grips of a reproducibility crisis for a number of years. Abcam is leading the way in addressing this with our range of recombinant monoclonal antibodies and knockout edited cell lines for gold-standard validation. Please check that this product meets your needs before purchasing.</p> <p>If you have any questions, special requirements or concerns, please send us an inquiry and/or contact our Support team ahead of purchase. Recommended alternatives for this product can be found below, along with publications, customer reviews and Q&amp;As</p> |

#### 製品の特性

|        |   |
|--------|---|
| 製品の状態  | Liquid  |
| 保存方法   | Shipped at 4°C. Upon delivery aliquot and store at -20°C. Avoid freeze / thaw cycles. |
| バッファー  | pH: 7.60<br>Preservative: 0.1% Sodium azide<br>Constituents: PBS, 1% BSA              |
| 精製度    | Immunogen affinity purified   |
| ポリ/モノ  | ポリクローナル   |
| アイソタイプ | IgG   |

## アプリケーション

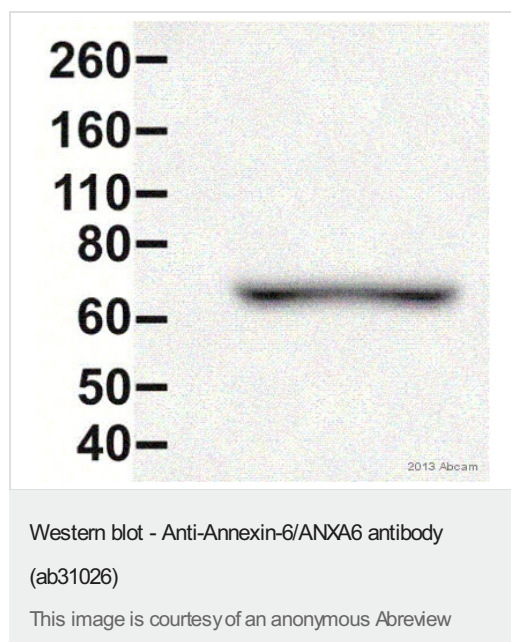
**The Abpromise guarantee** Abpromise保証は、次のテスト済みアプリケーションにおけるab31026の使用に適用されます  
アプリケーションノートには、推奨の開始希釈率がありますが、適切な希釈率につきましてはご確認ください。

| アプリケーション | Abreviews | 特記事項  |
|----------|-----------|---|
| WB       | ★★★★★ (3) | Use at an assay dependent concentration. Detects a band of approximately 76 kDa (predicted molecular weight: 76 kDa).   |
| IHC-P    |           | 1/50.<br>1/50 for 30 min at room temperature. Requires boiling of tissue sections in 10mM citrate buffer, pH 6.0 for 10 minutes followed by cooling at room temperature for 20 minutes. |

## ターゲット情報

|       |  |
|-------|--|
| 機能    | May associate with CD21. May regulate the release of Ca(2+) from intracellular stores.                   |
| 配列類似性 | Belongs to the annexin family.<br>Contains 8 annexin repeats.  |
| ドメイン  | A pair of annexin repeats may form one binding site for calcium and phospholipid.                        |
| 翻訳後修飾 | Phosphorylated in response to growth factor stimulation.   |
| 細胞内局在 | Cytoplasm. Melanosome. Identified by mass spectrometry in melanosome fractions from stage I to stage IV. |

## 画像



Anti-Annexin-6/ANXA6 antibody (ab31026) at 1/500 dilution +  
Mouse heart tissue lysate at 50 µg

### Secondary

HRP-conjugated Goat anti-rabbit IgG at 1/7500 dilution

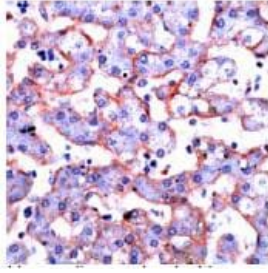
Developed using the ECL technique.

Performed under reducing conditions.

**Predicted band size:** 76 kDa

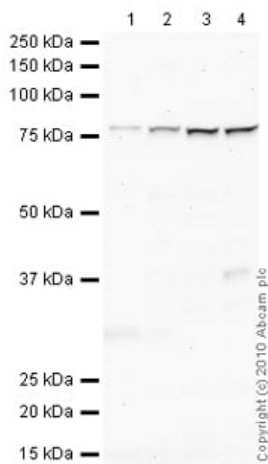
**Observed band size:** 76 kDa

**Exposure time:** 5 seconds



Immunohistochemistry (Formalin/PFA-fixed paraffin-embedded sections) - Anti-Annexin-6/ANXA6 antibody (ab31026)

Ab31026, at a dilution of 1/50, staining formalin fixed paraffin embedded Annexin-6/ANXA6 in human liver tissue by Immunohistochemistry.



Western blot - Anti-Annexin-6/ANXA6 antibody (ab31026)

**All lanes :** Anti-Annexin-6/ANXA6 antibody (ab31026) at 1 µg/ml

**Lane 1 :** Human placenta tissue lysate - total protein ([ab29745](#))

**Lane 2 :** Human kidney tissue lysate - total protein ([ab30203](#))

**Lane 3 :** JEG-3 (Human placental choriocarcinoma cell line) Whole Cell Lysate

**Lane 4 :** A498 (Human Kidney Carcinoma) Whole Cell Lysate

Lysates/proteins at 10 µg per lane.

### Secondary

**All lanes :** Goat Anti-Rabbit IgG H&L (HRP) preadsorbed ([ab97080](#)) at 1/5000 dilution

Developed using the ECL technique.

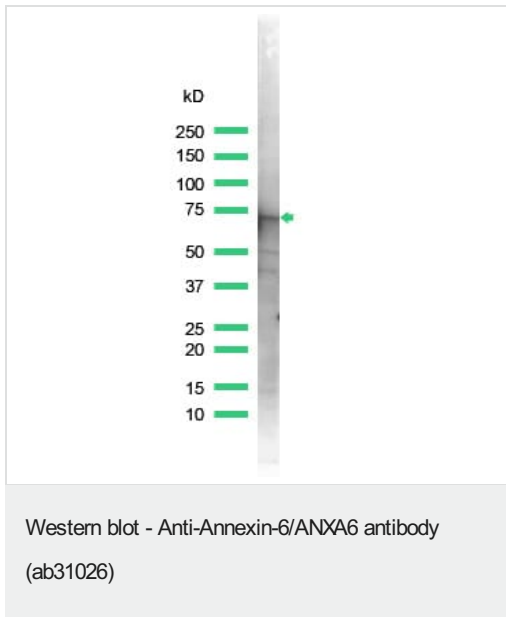
Performed under reducing conditions.

**Predicted band size:** 76 kDa

**Observed band size:** 76 kDa

**Additional bands at:** 37 kDa. We are unsure as to the identity of these extra bands.

**Exposure time:** 2 minutes



Anti-Annexin-6/ANXA6 antibody (ab31026) at 1/25 dilution + lysate prepared from 293 cells

**Predicted band size:** 76 kDa

**Observed band size:** 70 kDa

**Please note:** All products are "FOR RESEARCH USE ONLY. NOT FOR USE IN DIAGNOSTIC PROCEDURES"

### Our Abpromise to you: Quality guaranteed and expert technical support

---

- Replacement or refund for products not performing as stated on the datasheet
- Valid for 12 months from date of delivery
- Response to your inquiry within 24 hours
- We provide support in Chinese, English, French, German, Japanese and Spanish
- Extensive multi-media technical resources to help you
- We investigate all quality concerns to ensure our products perform to the highest standards

If the product does not perform as described on this datasheet, we will offer a refund or replacement. For full details of the Abpromise, please visit <https://www.abcam.co.jp/abpromise> or contact our technical team.

### Terms and conditions

---

- Guarantee only valid for products bought direct from Abcam or one of our authorized distributors