

Anti-Annexin-2/ANXA2 antibody [EPR18157-104] ab189473

リコンビナント RabMAb

画像数 7

製品の概要

製品名	Anti-Annexin-2/ANXA2 antibody [EPR18157-104]
製品の詳細	Rabbit monoclonal [EPR18157-104] to Annexin-2/ANXA2
由来種	Rabbit
アプリケーション	適用あり: Flow Cyt (Intra), IP, WB, IHC-P
種交差性	交差種: Mouse, Rat, Human
免疫原	Recombinant fragment. This information is proprietary to Abcam and/or its suppliers.
ポジティブ・コントロール	WB: Human fetal brain, fetal heart, fetal kidney and fetal spleen lysates; HeLa, K562, C6 and NIH/3T3 whole cell lysates; Mouse brain, heart, kidney and spleen lysates; Rat spleen lysate. IHC-P: Mouse liver tissue. Flow Cyt (intra): HeLa cells. IP: NIH/3T3 whole cell lysate.
特記事項	<p>This product is a recombinant monoclonal antibody, which offers several advantages including:</p> <ul style="list-style-type: none">- High batch-to-batch consistency and reproducibility- Improved sensitivity and specificity- Long-term security of supply- Animal-free production <p>For more information see here.</p> <p>Our RabMAb[®] technology is a patented hybridoma-based technology for making rabbit monoclonal antibodies. For details on our patents, please refer to RabMAb[®] patents.</p>

製品の特性

製品の状態	Liquid
保存方法	Shipped at 4°C. Store at +4°C short term (1-2 weeks). Upon delivery aliquot. Store at -20°C long term. Avoid freeze / thaw cycle.
バッファー	pH: 7.2 Preservative: 0.01% Sodium azide Constituents: PBS, 40% Glycerol (glycerin, glycerine), 0.05% BSA
精製度	Protein A purified
ポリ/モノ	モノクローナル
クローン名	EPR18157-104

アプリケーション

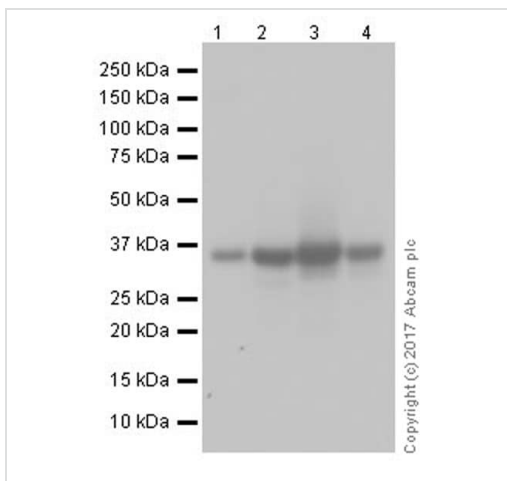
The Abpromise guarantee **Abpromise保証は、次のテスト済みアプリケーションにおけるab189473の使用に適用されず**
アプリケーションノートには、推奨の開始希釈率がありますが、適切な希釈率につきましてはご検討ください。

アプリケーション	Abreviews	特記事項
Flow Cyt (Intra)		1/500.
IP		1/30.
WB		1/5000. Detects a band of approximately 36, 34 kDa (predicted molecular weight: 38 kDa).
IHC-P		1/5000. Perform heat mediated antigen retrieval with Tris/EDTA buffer pH 9.0 before commencing with IHC staining protocol. IHC is not recommended in human or rat due to nonspecific or negative staining.

ターゲット情報

機能	Calcium-regulated membrane-binding protein whose affinity for calcium is greatly enhanced by anionic phospholipids. It binds two calcium ions with high affinity. May be involved in heat-stress response.
配列類似性	Belongs to the annexin family. Contains 4 annexin repeats.
ドメイン	A pair of annexin repeats may form one binding site for calcium and phospholipid.
翻訳後修飾	Phosphorylation of Tyr-24 enhances heat stress-induced translocation to the cell surface. ISGylated.
細胞内局在	Secreted > extracellular space > extracellular matrix > basement membrane. Melanosome. In the lamina beneath the plasma membrane. Identified by mass spectrometry in melanosome fractions from stage I to stage IV. Translocated from the cytoplasm to the cell surface through a Golgi-independent mechanism.

画像



Western blot - Anti-Annexin-2/ANXA2 antibody [EPR18157-104] (ab189473)

All lanes : Anti-Annexin-2/ANXA2 antibody [EPR18157-104] (ab189473) at 1/5000 dilution

Lane 1 : Human fetal brain lysate

Lane 2 : Human fetal heart lysate

Lane 3 : Human fetal kidney lysate

Lane 4 : Human fetal spleen lysate

Lysates/proteins at 10 µg per lane.

Secondary

All lanes : VeriBlot for IP Detection Reagent (HRP) ([ab131366](#)) at 1/4000 dilution

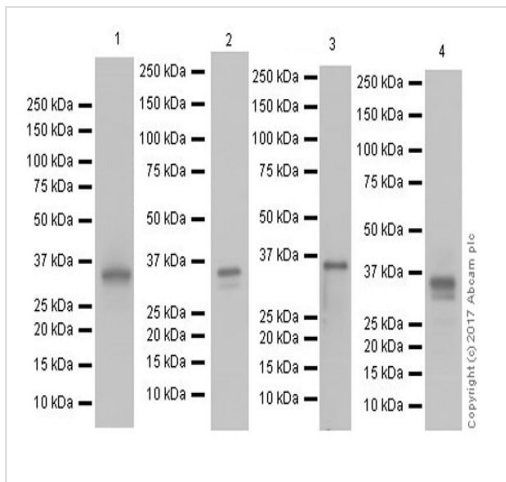
Developed using the ECL technique.

Predicted band size: 38 kDa

Observed band size: 36 kDa

Exposure time: 3 minutes

Blocking/Dilution buffer: 5% NFDm/TBST.



Western blot - Anti-Annexin-2/ANXA2 antibody [EPR18157-104] (ab189473)

All lanes : Anti-Annexin-2/ANXA2 antibody [EPR18157-104] (ab189473) at 1/5000 dilution

Lane 1 : HeLa (human epithelial cell line from cervix adenocarcinoma) whole cell lysate

Lane 2 : K562 (human chronic myelogenous leukemia cell line from bone marrow) whole cell lysate

Lane 3 : C6 (rat glial tumor cell line) whole cell lysate

Lane 4 : NIH/3T3 (mouse embryo fibroblast cell line) whole cell lysate

Lysates/proteins at 10 µg per lane.

Secondary

All lanes : Goat Anti-Rabbit IgG H&L (HRP) (**ab97051**) at 1/100000 dilution

Developed using the ECL technique.

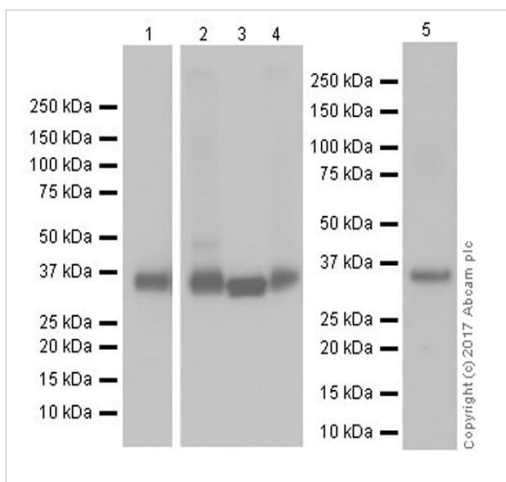
Predicted band size: 38 kDa

Observed band size: 34,36 kDa

Exposure times: Lane 1: 3 seconds; Lane 2,4: 1 second; Lane 3: 30 seconds.

Blocking/Dilution buffer: 5% NFD/MTBST.

The molecular weight observed is consistent with what has been described in the literature (PMID: 16373665).



Western blot - Anti-Annexin-2/ANXA2 antibody [EPR18157-104] (ab189473)

All lanes : Anti-Annexin-2/ANXA2 antibody [EPR18157-104] (ab189473) at 1/5000 dilution

Lane 1 : Mouse brain lysate

Lane 2 : Mouse heart lysate

Lane 3 : Mouse kidney lysate

Lane 4 : Mouse spleen lysate

Lane 5 : Rat spleen lysate

Lysates/proteins at 10 µg per lane.

Secondary

All lanes : Goat Anti-Rabbit IgG H&L (HRP) (**ab97051**) at 1/100000 dilution

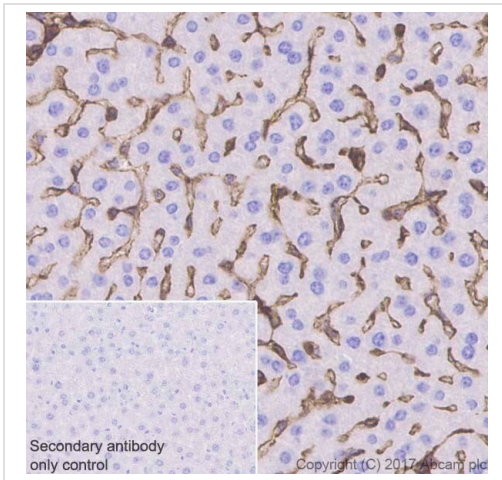
Developed using the ECL technique.

Predicted band size: 38 kDa

Observed band size: 36 kDa

Exposure times: Lane 1: 2 seconds; Lanes 2-4: 1 second; Lane 5: 3 minutes.

Blocking/Dilution buffer: 5% NFDm/TBST.

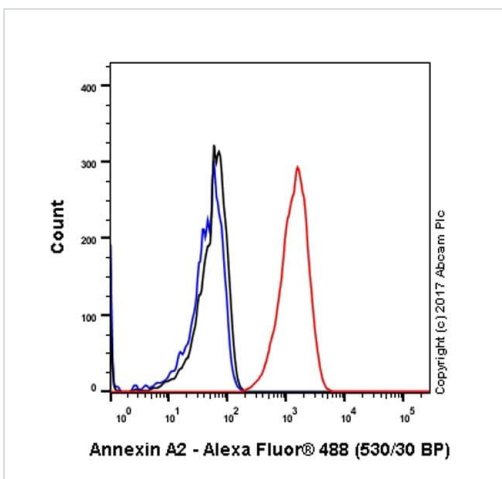


Immunohistochemical analysis of paraffin-embedded mouse liver tissue labeling Annexin-2/ANXA2 with ab189473 at 1/5000 dilution, followed by Goat Anti-Rabbit IgG H&L (HRP) Ready to use. Positive staining on the sinusoid of mouse liver (PMID: 23188673). Counter stained with hematoxylin.

Secondary antibody only control: Used PBS instead of primary antibody, secondary antibody is Goat Anti-Rabbit IgG H&L (HRP) Ready to use.

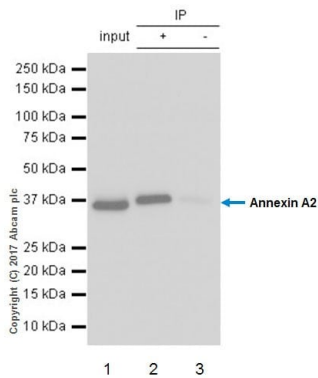
Perform heat mediated antigen retrieval with Tris/EDTA buffer pH 9.0 before commencing with IHC staining protocol.

Immunohistochemistry (Formalin/PFA-fixed paraffin-embedded sections) - Anti-Annexin-2/ANXA2 antibody [EPR18157-104] (ab189473)



Intracellular flow cytometric analysis of 4% paraformaldehyde-fixed, 90% methanol-permeabilized HeLa (human epithelial cell line from cervix adenocarcinoma) cell line labeling Annexin-2/ANXA2 with ab189473 at 1/500 dilution (red) compared with a Rabbit IgG, monoclonal [EPR25A] - Isotype Control (**ab172730**) (black) and an unlabeled control (cells without incubation with primary antibody and secondary antibody) (blue). Goat Anti-Rabbit IgG H&L (Alexa Fluor® 488) (**ab150077**) at 1/2000 dilution was used as the secondary antibody.

Flow Cytometry (Intracellular) - Anti-Annexin-2/ANXA2 antibody [EPR18157-104] (ab189473)



Immunoprecipitation - Anti-Annexin-2/ANXA2 antibody [EPR18157-104] (ab189473)

Annexin-2/ANXA2 was immunoprecipitated from 0.35 mg of NIH/3T3 (mouse embryo fibroblast cell line) whole cell lysate with ab189473 at 1/30 dilution. Western blot was performed from the immunoprecipitate using ab189473 at 1/2000 dilution. VeriBlot for IP Detection Reagent (HRP) ([ab131366](#)), was used for detection at 1/10000 dilution.

Lane 1: NIH/3T3 whole cell lysate 10 µg (Input).

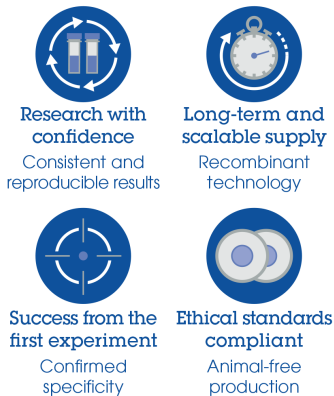
Lane 2: ab189473 IP in NIH/3T3 whole cell lysate.

Lane 3: Rabbit monoclonal IgG ([ab172730](#)) instead of ab189473 in NIH/3T3 whole cell lysate.

Exposure time: 1 second.

Blocking and dilution buffer and concentration: 5% NFD/MTBST.

Why choose a recombinant antibody?



Anti-Annexin-2/ANXA2 antibody [EPR18157-104] (ab189473)

Please note: All products are "FOR RESEARCH USE ONLY. NOT FOR USE IN DIAGNOSTIC PROCEDURES"

Our Abpromise to you: Quality guaranteed and expert technical support

- Replacement or refund for products not performing as stated on the datasheet
- Valid for 12 months from date of delivery
- Response to your inquiry within 24 hours
- We provide support in Chinese, English, French, German, Japanese and Spanish
- Extensive multi-media technical resources to help you
- We investigate all quality concerns to ensure our products perform to the highest standards

If the product does not perform as described on this datasheet, we will offer a refund or replacement. For full details of the Abpromise, please visit <https://www.abcam.co.jp/abpromise> or contact our technical team.

Terms and conditions

- Guarantee only valid for products bought direct from Abcam or one of our authorized distributors