


Anti-Ankrd26 antibody ab86780

1 References [画像数 2](#)

製品の概要

製品名	Anti-Ankrd26 antibody
製品の詳細	Rabbit polyclonal to Ankrd26
由来種	Rabbit
アプリケーション	適用あり: WB, IP
種交差性	交差種: Human 交差が予測される動物種: Chimpanzee, Rhesus monkey, Orangutan 
免疫原	Synthetic peptide, corresponding to a region within amino acids 1659-1709 of Human Ankrd26 (NP_055730.1)
ポジティブ・コントロール	HeLa whole cell lysate
特記事項	<p>The Life Science industry has been in the grips of a reproducibility crisis for a number of years. Abcam is leading the way in addressing this with our range of recombinant monoclonal antibodies and knockout edited cell lines for gold-standard validation. Please check that this product meets your needs before purchasing.</p> <p>If you have any questions, special requirements or concerns, please send us an inquiry and/or contact our Support team ahead of purchase. Recommended alternatives for this product can be found below, along with publications, customer reviews and Q&As</p>

製品の特性

製品の状態	Liquid
保存方法	Shipped at 4°C. Upon delivery aliquot and store at -20°C. Avoid freeze / thaw cycles.
バッファー	pH: 7 Preservative: 0.09% Sodium azide Constituent: Tris citrate/phosphate
精製度	Immunogen affinity purified
ポリ/モノ	ポリクローナル
アイソタイプ	IgG

アプリケーション

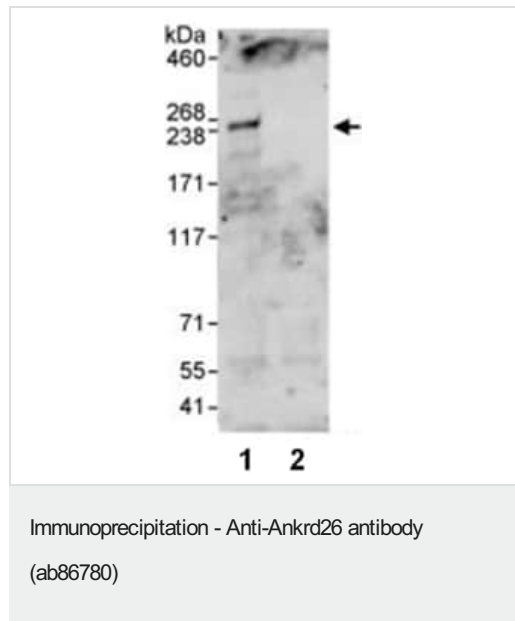
The Abpromise guarantee Abpromise保証は、 次のテスト済みアプリケーションにおけるab86780の使用に適用されます
 アプリケーションノートには、推奨の開始希釈率がありますが、適切な希釈率につきましてはご検討ください。

アプリケーション	Abreviews	特記事項
WB		1/1000 - 1/5000. Predicted molecular weight: 196 kDa. Or 0.4 - 1µg/ml.
IP		Use at 10 µg/mg of lysate.

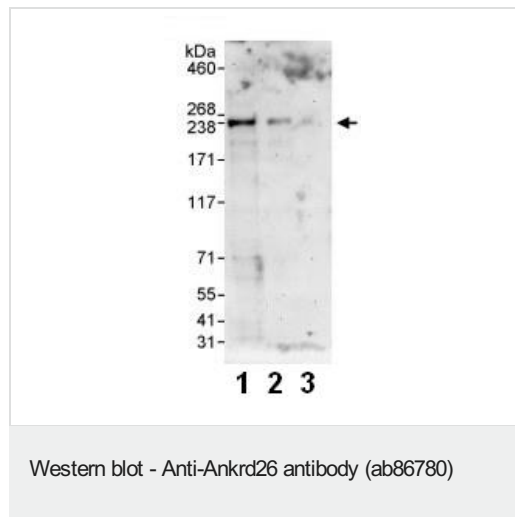
ターゲット情報

配列類似性	Contains 5 ANK repeats.
翻訳後修飾	Phosphorylated upon DNA damage, probably by ATM or ATR.

画像



HeLa whole cell lysate (1 mg) was immunoprecipitated using 10 µg ab86780 (lane 1), or a control IgG antibody (lane 2). 20% of the immunoprecipitate was analysed by Western blot using ab86780 at 1 µg/ml. Bands were detected using chemiluminescence with an exposure time of 30 seconds.



All lanes : Anti-Ankrd26 antibody (ab86780) at 0.4 µg/ml

- Lane 1 :** HeLa whole cell lysate at 50 µg
- Lane 2 :** HeLa whole cell lysate at 15 µg
- Lane 3 :** HeLa whole cell lysate at 5 µg

Developed using the ECL technique.

Predicted band size: 196 kDa

Exposure time: 3 minutes

Please note: All products are "FOR RESEARCH USE ONLY. NOT FOR USE IN DIAGNOSTIC PROCEDURES"

Our Abpromise to you: Quality guaranteed and expert technical support

- Replacement or refund for products not performing as stated on the datasheet
- Valid for 12 months from date of delivery
- Response to your inquiry within 24 hours

- We provide support in Chinese, English, French, German, Japanese and Spanish
- Extensive multi-media technical resources to help you
- We investigate all quality concerns to ensure our products perform to the highest standards

If the product does not perform as described on this datasheet, we will offer a refund or replacement. For full details of the Abpromise, please visit <https://www.abcam.co.jp/abpromise> or contact our technical team.

Terms and conditions

- Guarantee only valid for products bought direct from Abcam or one of our authorized distributors