


### Anti-Anillin antibody ab84676

★★★★☆ [1 Abreviews](#) [画像数 2](#)

#### 製品の概要

---

製品名	Anti-Anillin antibody
製品の詳細	Rabbit polyclonal to Anillin
由来種	Rabbit
アプリケーション	<b>適用あり:</b> IHC-P
種交差性	<b>交差種:</b> Human <b>交差が予測される動物種:</b> Rabbit, Cow, Dog, Pig, Chimpanzee, Rhesus monkey, Gorilla, Orangutan, Elephant 
免疫原	Synthetic peptide. This information is proprietary to Abcam and/or its suppliers.
ポジティブ・コントロール	Colon carcinoma; breast carcinoma.
特記事項	<p>The Life Science industry has been in the grips of a reproducibility crisis for a number of years. Abcam is leading the way in addressing this with our range of recombinant monoclonal antibodies and knockout edited cell lines for gold-standard validation. Please check that this product meets your needs before purchasing.</p> <p>If you have any questions, special requirements or concerns, please send us an inquiry and/or contact our Support team ahead of purchase. Recommended alternatives for this product can be found below, along with publications, customer reviews and Q&amp;As</p>

#### 製品の特性

---

製品の状態	Liquid
保存方法	Shipped at 4°C. Upon delivery aliquot and store at -20°C. Avoid freeze / thaw cycles.
バッファー	pH: 6.8 Preservative: 0.09% Sodium azide Constituents: 0.1% BSA, Tris buffered saline
精製度	Immunogen affinity purified
ポリ/モノ	ポリクローナル
アイソタイプ	IgG

#### アプリケーション

---

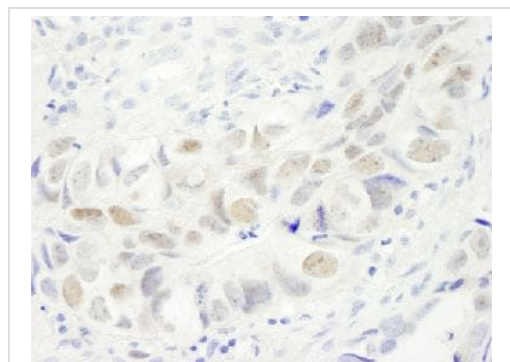
**The Abpromise guarantee**      **Abpromise保証は、次のテスト済みアプリケーションにおけるab84676の使用に適用されます**  
 アプリケーションノートには、推奨の開始希釈率がありますが、適切な希釈率につきましてはご検討ください。

アプリケーション	Abreviews	特記事項
IHC-P	★★★★★ (1)	1/100 - 1/500. Antigen retrieval with citrate buffer may enhance staining. Note: expected to work on frozen sections.

## ターゲット情報

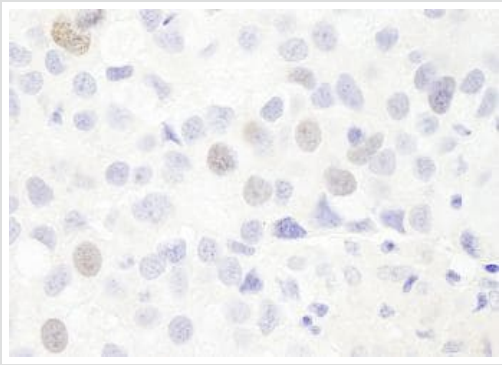
<b>機能</b>	Required for cytokinesis. Essential for the structural integrity of the cleavage furrow and for completion of cleavage furrow ingression.
<b>組織特異性</b>	Ubiquitously expressed. Present at highest levels in the brain, at high levels in the placenta and testis, at intermediate levels in the intestine, ovary, skeletal muscle and thymus and at lower levels in heart, kidney, liver, lung, pancreas, prostate and spleen. Overexpressed in many tumor types including breast, colorectal, endometrial, hepatic, kidney, lung, ovarian and pancreatic tumors.
<b>配列類似性</b>	Contains 1 PH domain.
<b>発生段階</b>	Expressed in fetal brain, heart, kidney, liver, lung, skeletal muscle, spleen and thymus. In dividing cells expression increases during S and G2 phases, peaks at mitosis and subsequently drops as cells enter G1 phase.
<b>翻訳後修飾</b>	Phosphorylated during mitosis. Ubiquitinated, and this requires FZR1/CDH1.
<b>細胞内局在</b>	Nucleus. Cytoplasm > cytoskeleton. Cytoplasm > cell cortex. Mainly found in the nucleus during interphase. Colocalizes with cortical F-actin upon nuclear envelope breakdown in mitosis and subsequently concentrates in the area of the prospective contractile ring in anaphase. This pattern persists until telophase, when the protein becomes concentrated in the midbody.

## 画像



Immunohistochemistry analysis of formalin-fixed, paraffin-embedded Human colon carcinoma using 1/250 ab84676, followed by DAB staining.

Immunohistochemistry (Formalin/PFA-fixed paraffin-embedded sections) - Anti-Anillin antibody (ab84676)



Immunohistochemistry (Formalin/PFA-fixed paraffin-embedded sections) - Anti-Anillin antibody (ab84676)

Immunohistochemistry analysis of formalin-fixed, paraffin-embedded Human breast carcinoma using 1/250 ab84676, followed by DAB staining.

**Please note:** All products are "FOR RESEARCH USE ONLY. NOT FOR USE IN DIAGNOSTIC PROCEDURES"

### Our Abpromise to you: Quality guaranteed and expert technical support

---

- Replacement or refund for products not performing as stated on the datasheet
- Valid for 12 months from date of delivery
- Response to your inquiry within 24 hours
- We provide support in Chinese, English, French, German, Japanese and Spanish
- Extensive multi-media technical resources to help you
- We investigate all quality concerns to ensure our products perform to the highest standards

If the product does not perform as described on this datasheet, we will offer a refund or replacement. For full details of the Abpromise, please visit <https://www.abcam.co.jp/abpromise> or contact our technical team.

### Terms and conditions

---

- Guarantee only valid for products bought direct from Abcam or one of our authorized distributors