




Anti-Anillin antibody ab5910

★★★★★ [5 Abreviews](#) [8 References](#) [画像数 4](#)

製品の概要

製品名	Anti-Anillin antibody
製品の詳細	Goat polyclonal to Anillin
由来種	Goat
アプリケーション	適用あり: Flow Cyt (Intra), ICC/IF, IHC-P
種交差性	交差種: Human 交差が予測される動物種: Mouse, Cow 
免疫原	Synthetic peptide corresponding to Human Anillin aa 1100 to the C-terminus (C terminal). (NP_001271230.1; NP_001271231.1) Database link: Q9NQW6 <div>  Run BLAST with  Run BLAST with </div>
ポジティブ・コントロール	ICC/IF: U2OS cells. Flow Cyt (intra): MCF7 cells. IHC-P: Human kidney tissue.
特記事項	<p>The Life Science industry has been in the grips of a reproducibility crisis for a number of years. Abcam is leading the way in addressing this with our range of recombinant monoclonal antibodies and knockout edited cell lines for gold-standard validation. Please check that this product meets your needs before purchasing.</p> <p>If you have any questions, special requirements or concerns, please send us an inquiry and/or contact our Support team ahead of purchase. Recommended alternatives for this product can be found below, along with publications, customer reviews and Q&As</p>

製品の特性

製品の状態	Liquid
保存方法	Shipped at 4°C. Upon delivery aliquot and store at -20°C or -80°C. Avoid repeated freeze / thaw cycles.
バッファー	pH: 7.30 Preservative: 0.02% Sodium azide Constituents: Tris buffered saline, 0.5% BSA
精製度	Immunogen affinity purified
特記事項 (精製)	Purified from goat serum by ammonium sulphate precipitation followed by antigen affinity chromatography using the immunizing peptide.
ポリ/モノ	ポリクローナル

アプリケーション

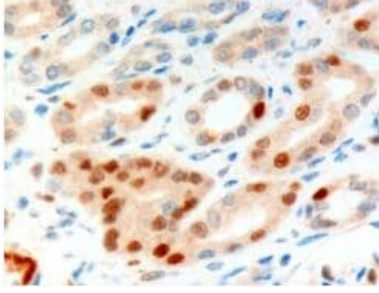
The Abpromise guarantee **Abpromise保証は、次のテスト済みアプリケーションにおけるab5910の使用に適用されます**
アプリケーションノートには、推奨の開始希釈率がありますが、適切な希釈率につきましてはご検討ください。

アプリケーション	Abreviews	特記事項
Flow Cyt (Intra)		Use a concentration of 10 µg/ml.
ICC/IF	★☆☆☆☆ (3)	Use a concentration of 10 µg/ml.
IHC-P	★★★★★ (1)	Use a concentration of 3 - 10 µg/ml.

ターゲット情報

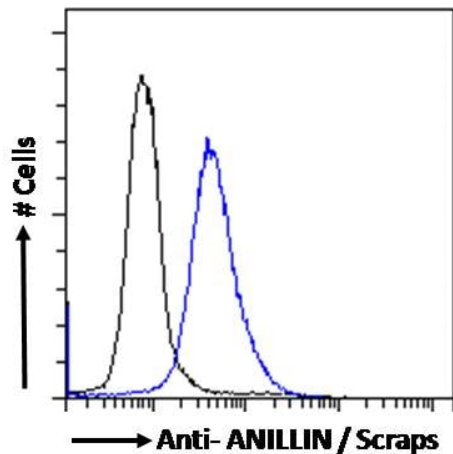
機能	Required for cytokinesis. Essential for the structural integrity of the cleavage furrow and for completion of cleavage furrow ingression.
組織特異性	Ubiquitously expressed. Present at highest levels in the brain, at high levels in the placenta and testis, at intermediate levels in the intestine, ovary, skeletal muscle and thymus and at lower levels in heart, kidney, liver, lung, pancreas, prostate and spleen. Overexpressed in many tumor types including breast, colorectal, endometrial, hepatic, kidney, lung, ovarian and pancreatic tumors.
配列類似性	Contains 1 PH domain.
発生段階	Expressed in fetal brain, heart, kidney, liver, lung, skeletal muscle, spleen and thymus. In dividing cells expression increases during S and G2 phases, peaks at mitosis and subsequently drops as cells enter G1 phase.
翻訳後修飾	Phosphorylated during mitosis. Ubiquitinated, and this requires FZR1/CDH1.
細胞内局在	Nucleus. Cytoplasm > cytoskeleton. Cytoplasm > cell cortex. Mainly found in the nucleus during interphase. Colocalizes with cortical F-actin upon nuclear envelope breakdown in mitosis and subsequently concentrates in the area of the prospective contractile ring in anaphase. This pattern persists until telophase, when the protein becomes concentrated in the midbody.

画像



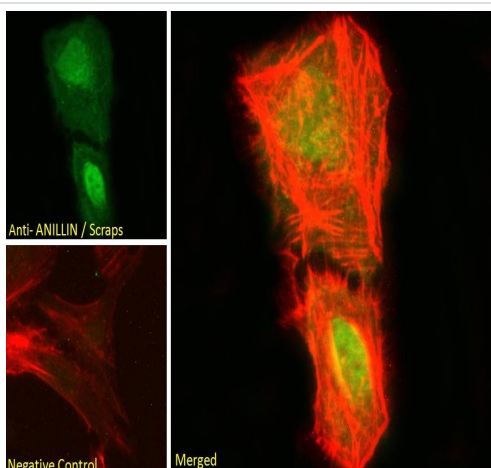
Immunohistochemistry (Formalin/PFA-fixed paraffin-embedded sections) - Anti-Anillin antibody (ab5910)

ab5910 at 10 μ g/ml staining Anillin in human kidney tissue section by Immunohistochemistry (Formalin/PFA fixed paraffin-embedded sections). Tissue underwent antigen retrieval in microwave and in Tris/EDTA buffer (pH 9.0). HRP-staining procedure was used for detection.



Flow Cytometry (Intracellular) - Anti-Anillin antibody (ab5910)

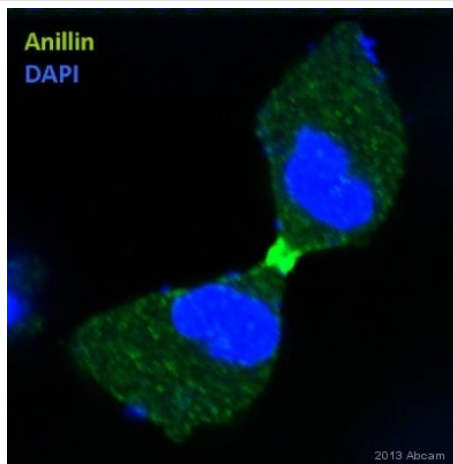
Flow cytometric analysis of paraformaldehyde fixed MCF7 cells (blue line) and permeabilized with 0.5% Triton using ab5910 . Primary incubation 1 hr (10 μ g/ml) followed by Alexa Fluor 488 secondary antibody (1 μ g/ml). IgG control: Unimmunized goat IgG (black line) fol



Immunocytochemistry/ Immunofluorescence - Anti-Anillin antibody (ab5910)

Immunocytochemistry/Immunofluorescence analysis of U2OS cells labelling Anillin with ab5910 at 10 μ g/ml. Cells were paraformaldehyde fixed and permeabilized with 0.15% triton. Primary antibody incubation was for 1 hour followed by incubation with an Alexa Fluor[®] 488-conjugated secondary antibody at 2 μ g/ml. DAPI nuclear counterstain was used.

Negative control: Unimmunized goat IgG (10 μ g/ml) followed by an Alexa Fluor[®] 488-conjugated secondary antibody (2 μ g/ml).



Immunocytochemistry/ Immunofluorescence - Anti-Anillin antibody (ab5910)

This image is courtesy of an Abreview submitted by Manoj B Menon

ab14404 staining Anillin Mouse fibroblast cells by ICC/IF (Immunocytochemistry/immunofluorescence). Cells were fixed with paraformaldehyde, permeabilized with methanol and blocked with 4% BSA for 2 hours at 4°C. Samples were incubated with primary antibody (1/25 in PBS + 1% BSA) for 2 hours at 25°C. An Alexa Fluor®488-conjugated Donkey anti-goat polyclonal (1/500) was used as the secondary antibody.

Please note: All products are "FOR RESEARCH USE ONLY. NOT FOR USE IN DIAGNOSTIC PROCEDURES"

Our Abpromise to you: Quality guaranteed and expert technical support

- Replacement or refund for products not performing as stated on the datasheet
- Valid for 12 months from date of delivery
- Response to your inquiry within 24 hours
- We provide support in Chinese, English, French, German, Japanese and Spanish
- Extensive multi-media technical resources to help you
- We investigate all quality concerns to ensure our products perform to the highest standards

If the product does not perform as described on this datasheet, we will offer a refund or replacement. For full details of the Abpromise, please visit <https://www.abcam.co.jp/abpromise> or contact our technical team.

Terms and conditions

- Guarantee only valid for products bought direct from Abcam or one of our authorized distributors