


Anti-Angiomotin antibody ab117776

1 [References](#) **2** [画像数](#)

製品の概要

製品名	Anti-Angiomotin antibody
製品の詳細	Rabbit polyclonal to Angiomotin
由来種	Rabbit
アプリケーション	適用あり: WB, IP
種交差性	交差種: Human 交差が予測される動物種: Mouse, Rat, Horse, Pig, Chimpanzee, Rhesus monkey, Gorilla, Orangutan, Bat, Elephant 
免疫原	Synthetic peptide, corresponding to a region within amino acids 1034-1084 of Human Angiomotin (NP_001106962.1).
ポジティブ・コントロール	293T whole cell lysates.
特記事項	<p>The Life Science industry has been in the grips of a reproducibility crisis for a number of years. Abcam is leading the way in addressing this with our range of recombinant monoclonal antibodies and knockout edited cell lines for gold-standard validation. Please check that this product meets your needs before purchasing.</p> <p>If you have any questions, special requirements or concerns, please send us an inquiry and/or contact our Support team ahead of purchase. Recommended alternatives for this product can be found below, along with publications, customer reviews and Q&As</p>

製品の特性

製品の状態	Liquid
保存方法	Shipped at 4°C. Upon delivery aliquot and store at -20°C. Avoid freeze / thaw cycles.
バッファー	pH: 6.8 Preservative: 0.09% Sodium azide Constituents: 0.1% BSA, 99% Tris buffered saline
精製度	Immunogen affinity purified
特記事項 (精製)	ab117776 was affinity purified using an epitope specific to Angiomotin immobilized on solid support.
ポリ/モノ	ポリクローナル
アイソタイプ	IgG

アプリケーション

The Abpromise guarantee Abpromise保証は、 次のテスト済みアプリケーションにおけるab117776の使用に適用されます
アプリケーションノートには、推奨の開始希釈率がありますが、適切な希釈率につきましてはご確認ください。

アプリケーション	Abreviews	特記事項
WB		1/2000 - 1/10000. Predicted molecular weight: 118 kDa.
IP		Use at 2-10 µg/mg of lysate.

ターゲット情報

機能	Plays a central role in tight junction maintenance via the complex formed with ARHGAP17, which acts by regulating the uptake of polarity proteins at tight junctions. Appears to regulate endothelial cell migration and tube formation. May also play a role in the assembly of endothelial cell-cell junctions.
組織特異性	Expressed in placenta and skeletal muscle. Found in the endothelial cells of capillaries as well as larger vessels of the placenta.
配列類似性	Belongs to the angiotensin family.
ドメイン	The coiled coil domain interacts directly with the BAR domain of ARHGAP17. The angiotensin binding domain (871-1005) allows the binding to angiotensin.
翻訳後修飾	Phosphorylated upon DNA damage, probably by ATM or ATR.
細胞内局在	Cell junction > tight junction. Localized on the cell surface. May act as a transmembrane protein.

画像



All lanes : Anti-Angiotensin antibody (ab117776) at 0.04 µg/ml

Lane 1 : 293T whole cell lysates at 50 µg

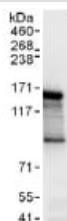
Lane 2 : 293T whole cell lysates at 15 µg

Lane 3 : HeLa whole cell lysates at 50 µg

Developed using the ECL technique.

Predicted band size: 118 kDa

Exposure time: 3 seconds



Immunoprecipitation - Anti-Angiotensin II antibody
(ab117776)

Detection of Angiotensin II by Western Blot of Immunoprecipitate.
ab117776 at 1 µg/ml staining Angiotensin II in 293T whole cell lysate
immunoprecipitated using ab117776 at 6 µg/mg lysate (1 mg/IP;
20% of IP loaded/lane).
Detection: Chemiluminescence with exposure time of 1 second.

Please note: All products are "FOR RESEARCH USE ONLY. NOT FOR USE IN DIAGNOSTIC PROCEDURES"

Our Abpromise to you: Quality guaranteed and expert technical support

- Replacement or refund for products not performing as stated on the datasheet
- Valid for 12 months from date of delivery
- Response to your inquiry within 24 hours
- We provide support in Chinese, English, French, German, Japanese and Spanish
- Extensive multi-media technical resources to help you
- We investigate all quality concerns to ensure our products perform to the highest standards

If the product does not perform as described on this datasheet, we will offer a refund or replacement. For full details of the Abpromise, please visit <https://www.abcam.co.jp/abpromise> or contact our technical team.

Terms and conditions

- Guarantee only valid for products bought direct from Abcam or one of our authorized distributors