

Anti-ALS2CL antibody ab119937

面格粉 1

医薬用外毒物

製品の概要

製品名	Anti-ALS2CL antibody
製品の詳細	Rabbit polyclonal to ALS2CL
由来種	Rabbit
アプリケーション	適用あり: WB
種交差性	交差種: Mouse
免疫原	Synthetic peptide from N terminal residues of Human ALS2CL protein (NM_147129.3).
ポジティブ・コントロール	Mouse kidney lysate.
特記事項	<p>The Life Science industry has been in the grips of a reproducibility crisis for a number of years. Abcam is leading the way in addressing this with our range of recombinant monoclonal antibodies and knockout edited cell lines for gold-standard validation. Please check that this product meets your needs before purchasing.</p> <p>If you have any questions, special requirements or concerns, please send us an inquiry and/or contact our Support team ahead of purchase. Recommended alternatives for this product can be found below, along with publications, customer reviews and Q&As</p>

製品の特性

製品の状態	Lyophilized:Reconstitute in 200ul sterile H2O.
保存方法	Shipped at 4°C. Upon delivery aliquot and store at -20°C. Avoid repeated freeze / thaw cycles.
バッファー	<p>pH: 7.20</p> <p>Preservative: 0.02% Sodium azide</p> <p>Constituents: PBS, 1% BSA</p>
精製度	Immunogen affinity purified
特記事項(精製)	ab119937 is purified by a peptide affinity column.
ポリ/モノ	ポリクローナル
アイソタイプ	IgG

アプリケーション

The Abpromise guarantee

Abpromise保証は、次のテスト済みアプリケーションにおけるab119937の使用に適用されます

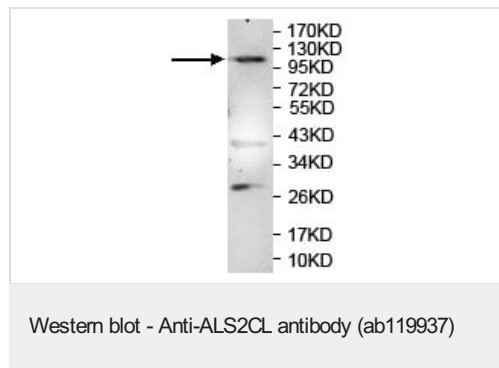
アプリケーションノートには、推奨の開始希釈率がありますが、適切な希釈率につきましてはご確認ください。

アプリケーション	Abreviews	特記事項
WB		1/500 - 1/1000. Detects a band of approximately 108 kDa (predicted molecular weight: 22, 23, 53, 85, 108 kDa).

ターゲット情報

機能	Acts as a guanine nucleotide exchange factor (GEF) for Rab5 GTPase. Regulates the ALS2-mediated endosome dynamics.
組織特異性	Expressed in heart and kidney.
配列類似性	Contains 8 MORN repeats. Contains 1 VPS9 domain.
細胞内局在	Cytoplasm. Distributed onto the vesicular compartments in the cytoplasm with strong punctated staining. Colocalizes with RAB5A onto the vesicular/membranous compartments in the cytoplasm, particularly to the leading edges of the cells.

画像



Anti-ALS2CL antibody (ab119937) at 1/500 dilution + Mouse kidney lysate

Predicted band size: 22, 23, 53, 85, 108 kDa

Observed band size: 108 kDa

Please note: All products are "FOR RESEARCH USE ONLY. NOT FOR USE IN DIAGNOSTIC PROCEDURES"

Our Abpromise to you: Quality guaranteed and expert technical support

- Replacement or refund for products not performing as stated on the datasheet
- Valid for 12 months from date of delivery
- Response to your inquiry within 24 hours
- We provide support in Chinese, English, French, German, Japanese and Spanish
- Extensive multi-media technical resources to help you
- We investigate all quality concerns to ensure our products perform to the highest standards

If the product does not perform as described on this datasheet, we will offer a refund or replacement. For full details of the Abpromise, please visit <https://www.abcam.co.jp/abpromise> or contact our technical team.

Terms and conditions

- Guarantee only valid for products bought direct from Abcam or one of our authorized distributors