


### Anti-ALR/HPO antibody ab36376

画像数 2

#### 製品の概要

製品名	Anti-ALR/HPO antibody
製品の詳細	Rabbit polyclonal to ALR/HPO
由来種	Rabbit
アプリケーション	適用あり: WB, ICC/IF
種交差性	交差種: Mouse, Human 交差が予測される動物種: Rat, Xenopus laevis 
免疫原	Synthetic peptide corresponding to Human ALR/HPO conjugated to keyhole limpet haemocyanin. (Peptide available as <a href="#">ab36485</a> , <a href="#">ab36486</a> )
ポジティブ・コントロール	Recombinant Human ALR/HPO protein ( <a href="#">ab114811</a> ) can be used as a positive control in WB. This antibody gave a positive signal in mouse liver and mouse testis tissue lysates.
特記事項	<p>The Life Science industry has been in the grips of a reproducibility crisis for a number of years. Abcam is leading the way in addressing this with our range of recombinant monoclonal antibodies and knockout edited cell lines for gold-standard validation. Please check that this product meets your needs before purchasing.</p> <p>If you have any questions, special requirements or concerns, please send us an inquiry and/or contact our Support team ahead of purchase. Recommended alternatives for this product can be found below, along with publications, customer reviews and Q&amp;As</p>

#### 製品の特性

製品の状態	Liquid
保存方法	Shipped at 4°C. Store at +4°C short term (1-2 weeks). Upon delivery aliquot. Store at -20°C or -80°C. Avoid freeze / thaw cycle.
バッファー	pH: 7.40 Preservative: 0.02% Sodium azide Constituent: PBS  Batches of this product that have a concentration < 1mg/ml may have BSA added as a stabilising agent. If you would like information about the formulation of a specific lot, please contact our scientific support team who will be happy to help.
精製度	Immunogen affinity purified

ポリ/モノ  
アイソタイプ

ポリクローナル  
IgG

## アプリケーション

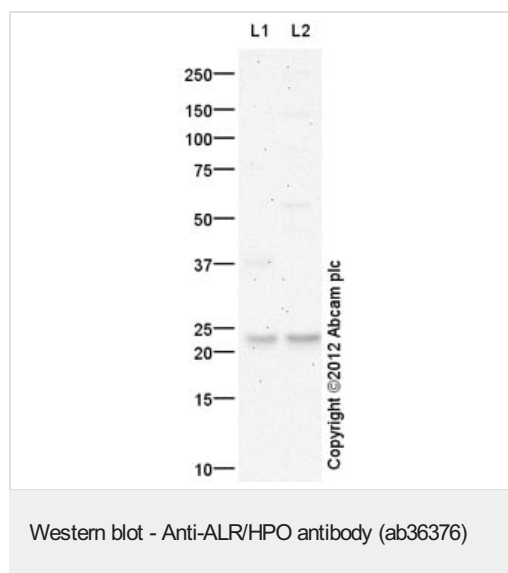
**The Abpromise guarantee** Abpromise保証は、 次のテスト済みアプリケーションにおけるab36376の使用に適用されます  
アプリケーションノートには、推奨の開始希釈率がありますが、適切な希釈率につきましてはご検討ください。

アプリケーション	Abreviews	特記事項
WB		Use a concentration of 1 µg/ml. Detects a band of approximately 23 kDa (predicted molecular weight: 23 kDa).
ICC/IF		Use a concentration of 1 µg/ml.

## ターゲット情報

機能	Isoform 1: FAD-dependent sulfhydryl oxidase. Within the mitochondrial intermembrane space, participates in a chain of disulfide exchange reactions with MIA40, that generate disulfide bonds in a number of resident proteins with twin Cx3C and Cx9C motifs. Isoform 2: May act as an autocrine hepatotrophic growth factor promoting liver regeneration.
組織特異性	Ubiquitously expressed. Highest expression in the testis and liver and low expression in the muscle.
関連疾患	Defects in GFER are a cause of mitochondrial progressive myopathy with congenital cataract hearing loss and developmental delay (MPMCHD) [MIM:613076]; also called combined mitochondrial complex deficiency.
配列類似性	Contains 1 ERV/ALR sulfhydryl oxidase domain.
細胞内局在	Mitochondrion intermembrane space and Cytoplasm. Secreted.

## 画像



**All lanes :** Anti-ALR/HPO antibody (ab36376) at 1 µg/ml

**Lane 1 :** Liver (Mouse) Tissue Lysate

**Lane 2 :** Testis (Mouse) Tissue Lysate

Lysates/proteins at 10 µg per lane.

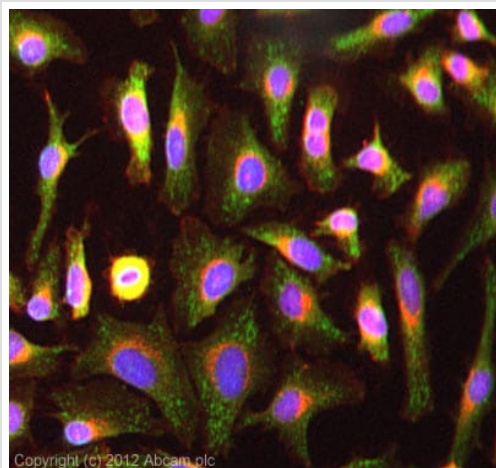
### Secondary

**All lanes :** Goat Anti-Rabbit IgG H&L (HRP) preadsorbed  
([ab97080](#)) at 1/5000 dilution

**Predicted band size:** 23 kDa

**Observed band size:** 23 kDa

Abcam recommends using milk as the blocking agent. Abcam welcomes customer feedback and would appreciate any comments regarding this product and the data presented above.



Immunocytochemistry/ Immunofluorescence - Anti-ALR/HPO antibody (ab36376)

ICC/IF image of ab36376 stained HeLa cells. The cells were 100% methanol fixed (5 min) and then incubated in 1%BSA / 10% normal goat serum / 0.3M glycine in 0.1% PBS-Tween for 1h to permeabilise the cells and block non-specific protein-protein interactions. The cells were then incubated with the antibody (ab36376, 5µg/ml) overnight at +4°C. The secondary antibody (green) was **ab96899**, DyLight® 488 goat anti-rabbit IgG (H+L) used at a 1/250 dilution for 1h. Alexa Fluor® 594 WGA was used to label plasma membranes (red) at a 1/200 dilution for 1h. DAPI was used to stain the cell nuclei (blue) at a concentration of 1.43µM. This antibody also gave a positive result in 4% PFA fixed (10 min) HepG2 and MCF7 cells at 5µg/ml, and in 100% methanol fixed (5 min) MCF7 cells at 5µg/ml.

**Please note:** All products are "FOR RESEARCH USE ONLY. NOT FOR USE IN DIAGNOSTIC PROCEDURES"

### Our Abpromise to you: Quality guaranteed and expert technical support

---

- Replacement or refund for products not performing as stated on the datasheet
- Valid for 12 months from date of delivery
- Response to your inquiry within 24 hours
- We provide support in Chinese, English, French, German, Japanese and Spanish
- Extensive multi-media technical resources to help you
- We investigate all quality concerns to ensure our products perform to the highest standards

If the product does not perform as described on this datasheet, we will offer a refund or replacement. For full details of the Abpromise, please visit <https://www.abcam.co.jp/abpromise> or contact our technical team.

### Terms and conditions

---

- Guarantee only valid for products bought direct from Abcam or one of our authorized distributors