


Anti-alpha Tubulin antibody - Loading Control ab4074

★★★★★ [28 Abreviews](#) [385 References](#) [画像数 5](#)

製品の概要

製品名	Anti-alpha Tubulin antibody - Loading Control
製品の詳細	Rabbit polyclonal to alpha Tubulin - Loading Control
由来種	Rabbit
特異性	This antibody detects a single band in cell lines, corresponding to alpha tubulin.
アプリケーション	適用あり: WB, ICC/IF
種交差性	交差種: Mouse, Rat, Chicken, Cow, Human, Chinese hamster 交差が予測される動物種: Pig, Xenopus laevis, Chimpanzee, Monkey, Zebrafish 
免疫原	Synthetic peptide. This information is proprietary to Abcam and/or its suppliers.
ポジティブ・コントロール	WB: HeLa, NIH 3T3, and PC12 cell lysates. ICC/IF: HeLa cells. IHC-P: Human endometrium tissue.
特記事項	<p>The Life Science industry has been in the grips of a reproducibility crisis for a number of years. Abcam is leading the way in addressing this with our range of recombinant monoclonal antibodies and knockout edited cell lines for gold-standard validation. Please check that this product meets your needs before purchasing.</p> <p>If you have any questions, special requirements or concerns, please send us an inquiry and/or contact our Support team ahead of purchase. Recommended alternatives for this product can be found below, along with publications, customer reviews and Q&As</p>

製品の特性

製品の状態	Liquid
保存方法	Shipped at 4°C. Store at +4°C short term (1-2 weeks). Upon delivery aliquot. Store at -20°C or -80°C. Avoid freeze / thaw cycle.
バッファー	pH: 7.40 Preservative: 0.02% Sodium azide Constituent: PBS Batches of this product that have a concentration < 1mg/ml may have BSA added as a stabilising agent. If you would like information about the formulation of a specific lot, please contact our scientific support team who will be happy to help.
精製度	Immunogen affinity purified

一次抗体 備考	This antibody makes an excellent loading control.
ポリ/モノ	ポリクローナル
アイソタイプ	IgG

アプリケーション

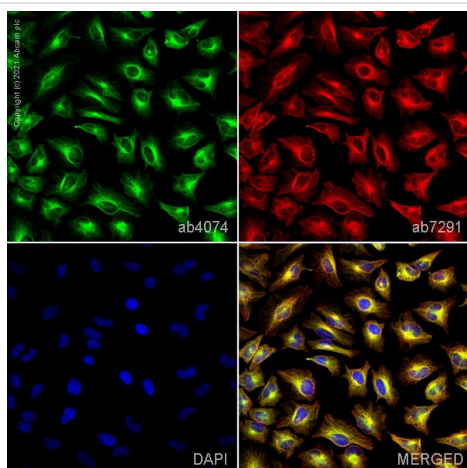
The Abpromise guarantee **Abpromise保証は、次のテスト済みアプリケーションにおけるab4074の使用に適用されます**
アプリケーションノートには、推奨の開始希釈率がありますが、適切な希釈率につきましてはご検討ください。

アプリケーション	Abreviews	特記事項
WB	★★★★★ (18)	Use a concentration of 1 µg/ml. Detects a band of approximately 50 kDa (predicted molecular weight: 50 kDa). Can be blocked with alpha Tubulin peptide (ab23537).
ICC/IF	★★★★★ (9)	Use a concentration of 1 µg/ml.

ターゲット情報

機能	Tubulin is the major constituent of microtubules. It binds two moles of GTP, one at an exchangeable site on the beta chain and one at a non-exchangeable site on the alpha chain.
配列類似性	Belongs to the tubulin family.
翻訳後修飾	Some glutamate residues at the C-terminus are polyglutamylated. This modification occurs exclusively on glutamate residues and results in polyglutamate chains on the gamma-carboxyl group. Also monoglycylated but not polyglycylated due to the absence of functional TTL10 in human. Monoglycylation is mainly limited to tubulin incorporated into axonemes (cilia and flagella) whereas glutamylation is prevalent in neuronal cells, centrioles, axonemes, and the mitotic spindle. Both modifications can coexist on the same protein on adjacent residues, and lowering glycylation levels increases polyglutamylated, and reciprocally. The precise function of such modifications is still unclear but they regulate the assembly and dynamics of axonemal microtubules. Acetylation of alpha chains at Lys-40 stabilizes microtubules and affects affinity and processivity of microtubule motors. This modification has a role in multiple cellular functions, ranging from cell motility, cell cycle progression or cell differentiation to intracellular trafficking and signaling.
細胞内局在	Cytoplasm > cytoskeleton.

画像

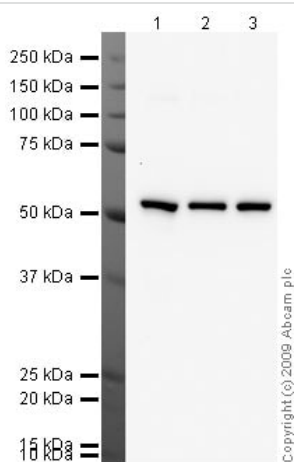


Immunocytochemistry/ Immunofluorescence - Anti-alpha Tubulin antibody - Loading Control (ab4074)

ab4074 staining alpha Tubulin in HeLa cells. The cells were fixed with 4% paraformaldehyde (10 min), permeabilized with 0.1% PBS-Triton X-100 for 5 minutes and then blocked with 1% BSA/10% normal goat serum/0.3M glycine in 0.1% PBS-Tween for 1h. The cells were then incubated overnight at 4°C with **ab4064** at 1µg/ml and **ab7291**, Mouse monoclonal [DM1A] to alpha Tubulin - Loading Control. Cells were then incubated with **ab150081**, Goat polyclonal Secondary Antibody to Rabbit IgG - H&L (Alexa Fluor® 488), pre-adsorbed at 1/1000 dilution (shown in green) and **ab150120**, Goat polyclonal Secondary Antibody to Mouse IgG - H&L (Alexa Fluor® 594), pre-adsorbed at 1/1000 dilution (shown in pseudocolour red). Nuclear DNA was labelled with DAPI (shown in blue).

Also suitable in cells fixed with 100% methanol (5 min).

Image was acquired with a high-content analyser (Operetta CLS, Perkin Elmer) and a maximum intensity projection of confocal sections is shown.



Western blot - Anti-alpha Tubulin antibody - Loading Control (ab4074)

All lanes : Anti-alpha Tubulin antibody - Loading Control (ab4074) at 1 µg/ml

Lane 1 : HeLa (Human epithelial carcinoma cell line) Whole Cell Lysate (**ab27252**)

Lane 2 : NIH/3T3 (Mouse) Whole Cell Lysate (**ab52956**)

Lane 3 : PC-12 (Rat adrenal pheochromocytoma cell line) Whole Cell Lysate (**ab50957**)

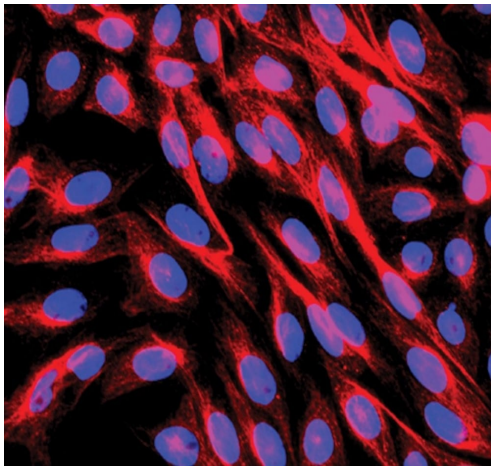
Lysates/proteins at 10 µg per lane.

Secondary

All lanes : Goat polyclonal to Rabbit IgG - H&L - Pre-Adsorbed (HRP) (**ab65484**) at 1/3000 dilution

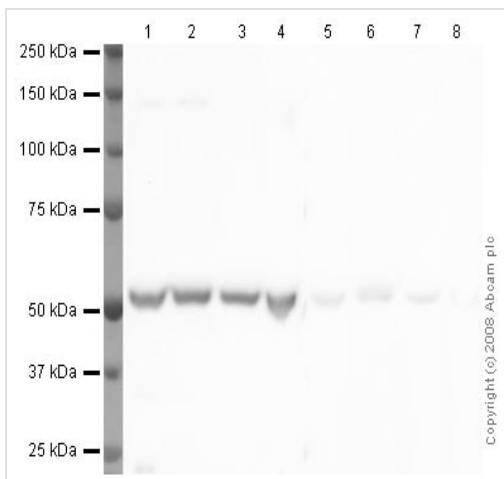
Performed under reducing conditions.

Predicted band size: 50 kDa



Immunocytochemistry/ Immunofluorescence - Anti-alpha Tubulin antibody - Loading Control (ab4074)

Image from PLoS One, 2014; 9(10): e109590. Fig 50, doi: 10.1371/journal.pone.0109590 Reproduced under the Creative Commons license <http://creativecommons.org/licenses/by/4.0/>



Western blot - Anti-alpha Tubulin antibody - Loading Control (ab4074)

Immunocytochemistry of *SisNPFR-C6E8* cell line. Cells were prefixed in freshly prepared 4% paraformaldehyde (PFA) in F12 K culture medium with 10% fetal bovine serum and Geneticin. Fixed cells were permeabilized in PBST (0.25% Triton X-100 in PBS) for 5 min and blocked at 4°C overnight in 5% normal goat serum. The cells were then incubated at 4°C overnight with ab4074 (1:50). Cover slips were placed onto slides and mounted with VectaShield containing DAPI.

All lanes : Anti-alpha Tubulin antibody - Loading Control (ab4074) at 1 µg/ml

Lane 1 : HeLa (Human epithelial carcinoma cell line) Whole Cell Lysate ([ab27252](#))

Lane 2 : HEK-293 (Human) Whole Cell Lysate ([ab52256](#))

Lane 3 : NIH/3T3 whole cell lysate ([ab7179](#))

Lane 4 : PC-12 (Rat adrenal pheochromocytoma cell line) Whole Cell Lysate ([ab50957](#))

Lane 5 : HeLa (Human epithelial carcinoma cell line) Whole Cell Lysate ([ab27252](#)) with Human alpha Tubulin peptide ([ab23537](#)) at 1 µg/ml

Lane 6 : HEK-293 (Human) Whole Cell Lysate ([ab52256](#)) with Human alpha Tubulin peptide ([ab23537](#)) at 1 µg/ml

Lane 7 : NIH/3T3 whole cell lysate ([ab7179](#)) with Human alpha Tubulin peptide ([ab23537](#)) at 1 µg/ml

Lane 8 : PC-12 (Rat adrenal pheochromocytoma cell line) Whole Cell Lysate ([ab50957](#)) with Human alpha Tubulin peptide ([ab23537](#)) at 1 µg/ml

Lysates/proteins at 20 µg per lane.

Secondary

All lanes : Goat polyclonal to Rabbit IgG - H&L - Pre-Adsorbed (HRP) ([ab65484](#)) at 1/3000 dilution

Performed under reducing conditions.

Predicted band size: 50 kDa



All lanes : Anti-alpha Tubulin antibody - Loading Control (ab4074) at 1 µg/ml

Lane 1 : Mouse 3T3 lysate

Lane 2 : Rat liver lysate

Lane 3 : Cow cell lysate

Lane 4 : Chicken cell lysate

Lane 5 : CHO lysate

Lysates/proteins at 20 µg per lane.

Secondary

All lanes : Goat Anti-Rabbit IgG H&L (HRP) ([ab6721](#)) at 1/5000 dilution

Developed using the ECL technique.

Performed under reducing conditions.

Predicted band size: 50 kDa

Observed band size: 50 kDa

Exposure time: 30 seconds

ab4074 cross-reacts strongly with Mouse 3T3 lysate and shows weak cross-reactivity with Rat liver, Cow, Chicken and CHO lysates.

Please note: All products are "FOR RESEARCH USE ONLY. NOT FOR USE IN DIAGNOSTIC PROCEDURES"

Our Abpromise to you: Quality guaranteed and expert technical support

- Replacement or refund for products not performing as stated on the datasheet
- Valid for 12 months from date of delivery
- Response to your inquiry within 24 hours
- We provide support in Chinese, English, French, German, Japanese and Spanish
- Extensive multi-media technical resources to help you
- We investigate all quality concerns to ensure our products perform to the highest standards

If the product does not perform as described on this datasheet, we will offer a refund or replacement. For full details of the Abpromise, please visit <https://www.abcam.co.jp/abpromise> or contact our technical team.

Terms and conditions

- Guarantee only valid for products bought direct from Abcam or one of our authorized distributors