


# Anti-alpha Tubulin antibody [EPR13478(B)] - Loading Control ab176560

リコンビナント **RabMAb**

★★★★★ **11 Abreviews**   **32 References**   画像数 10

### 製品の概要

製品名	Anti-alpha Tubulin antibody [EPR13478(B)] - Loading Control
製品の詳細	Rabbit monoclonal [EPR13478(B)] to alpha Tubulin - Loading Control
由来種	Rabbit
アプリケーション	<b>適用あり:</b> Flow Cyt (Intra), WB, IHC-P, ICC/IF
種交差性	<b>交差種:</b> Human <b>交差が予測される動物種:</b> Mouse, Rat, African green monkey 
免疫原	Synthetic peptide. This information is proprietary to Abcam and/or its suppliers.
ポジティブ・コントロール	HeLa, Jurkat, A431 and K562 cell lysates; Human kidney and uterus tissues; A431 and Jurkat cells.
特記事項	<p>This product is a recombinant monoclonal antibody, which offers several advantages including:</p> <ul style="list-style-type: none"> <li>- High batch-to-batch consistency and reproducibility</li> <li>- Improved sensitivity and specificity</li> <li>- Long-term security of supply</li> <li>- Animal-free production</li> </ul> <p>For more information <a href="#">see here</a>.</p> <p>Our RabMAb<sup>®</sup> technology is a patented hybridoma-based technology for making rabbit monoclonal antibodies. For details on our patents, please refer to <a href="#">RabMAb<sup>®</sup> patents</a>.</p>

### 製品の特性

製品の状態	Liquid
保存方法	Shipped at 4°C. Store at +4°C short term (1-2 weeks). Upon delivery aliquot. Store at -20°C long term. Avoid freeze / thaw cycle.
バッファー	Preservative: 0.01% Sodium azide Constituents: 40% Glycerol, PBS, 0.05% BSA
精製度	Protein A purified
ポリ/モノ	モノクローナル
クローン名	EPR13478(B)

## アプリケーション

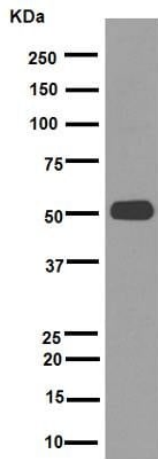
**The Abpromise guarantee** Abpromise保証は、次のテスト済みアプリケーションにおけるab176560の使用に適用されます  
アプリケーションノートには、推奨の開始希釈率がありますが、適切な希釈率につきましてはご検討ください。

アプリケーション	Abreviews	特記事項
Flow Cyt (Intra)		1/60. For unpurified, use 1/10. <b>ab172730</b> - Rabbit monoclonal IgG, is suitable for use as an isotype control with this antibody.
WB	★★★★★ (8)	1/2000 - 1/10000. Predicted molecular weight: 50 kDa. <b>For unpurified, use 1/1000 - 1/10000.</b>
IHC-P		1/350. Perform heat mediated antigen retrieval before commencing with IHC staining protocol. See <u>IHC antigen retrieval protocols</u> . <b>For unpurified, use 1/100.</b>
ICC/IF	★★★★★ (2)	1/350. <b>For unpurified, use 1/100.</b>

## ターゲット情報

機能	Tubulin is the major constituent of microtubules. It binds two moles of GTP, one at an exchangeable site on the beta chain and one at a non-exchangeable site on the alpha chain.
配列類似性	Belongs to the tubulin family.
翻訳後修飾	Some glutamate residues at the C-terminus are polyglutamylated. This modification occurs exclusively on glutamate residues and results in polyglutamate chains on the gamma-carboxyl group. Also monoglycylated but not polyglycylated due to the absence of functional TTL10 in human. Monoglycylation is mainly limited to tubulin incorporated into axonemes (cilia and flagella) whereas glutamylation is prevalent in neuronal cells, centrioles, axonemes, and the mitotic spindle. Both modifications can coexist on the same protein on adjacent residues, and lowering glycylation levels increases polyglutamylation, and reciprocally. The precise function of such modifications is still unclear but they regulate the assembly and dynamics of axonemal microtubules. Acetylation of alpha chains at Lys-40 stabilizes microtubules and affects affinity and processivity of microtubule motors. This modification has a role in multiple cellular functions, ranging from cell motility, cell cycle progression or cell differentiation to intracellular trafficking and signaling.
細胞内局在	Cytoplasm > cytoskeleton.

## 画像



Western blot - Anti-alpha Tubulin antibody  
[EPR13478(B)] - Loading Control (ab176560)

Anti-alpha Tubulin antibody [EPR13478(B)] - Loading Control  
(ab176560) at 1/7000 dilution (Purified) + Jurkat cell lysate at 10 µg

### Secondary

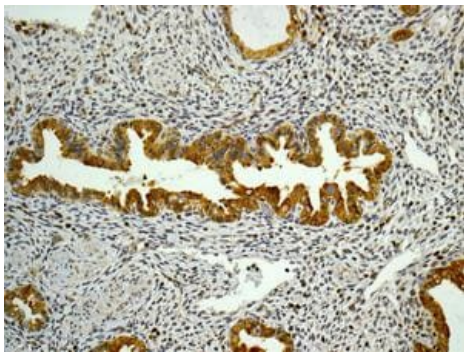
HRP goat anti-rabbit IgG (H+L) at 1/1000 dilution

**Predicted band size:** 50 kDa

**Observed band size:** 50 kDa

Blocking buffer: 5% NFDM/TBST

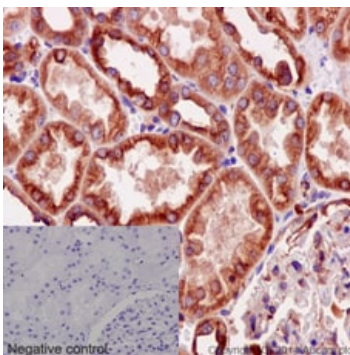
Dilution buffer: 5% NFDM/TBST



Immunohistochemistry (Formalin/PFA-fixed paraffin-  
embedded sections) - Anti-alpha Tubulin antibody  
[EPR13478(B)] - Loading Control (ab176560)

Immunohistochemical analysis of formalin-fixed, paraffin-embedded  
Human uterus tissue labeling alpha Tubulin with unpurified  
ab176560 at a 1/100 dilution.

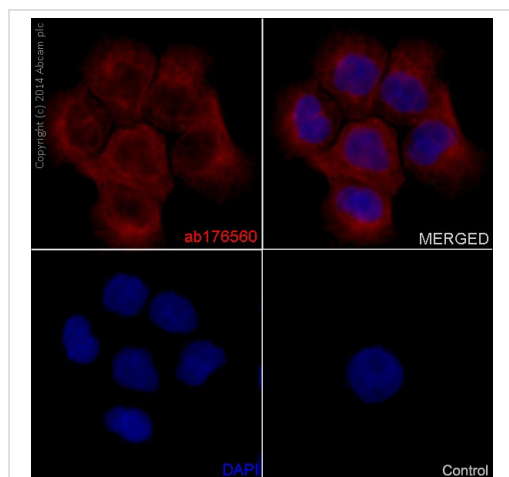
Perform heat mediated antigen retrieval before commencing with  
IHC staining protocol.



Immunohistochemistry (Formalin/PFA-fixed paraffin-  
embedded sections) - Anti-alpha Tubulin antibody  
[EPR13478(B)] - Loading Control (ab176560)

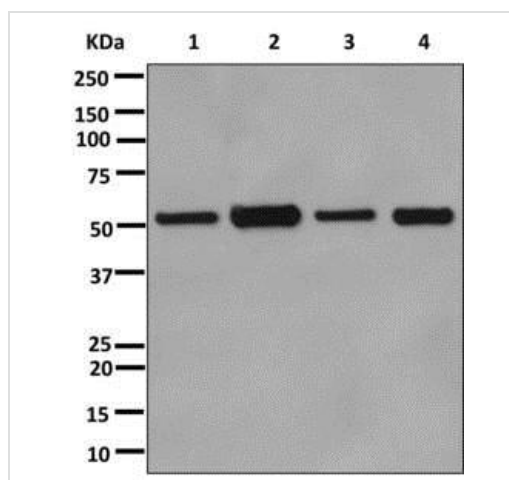
Immunohistochemical staining of paraffin embedded human kidney  
with purified ab176560 at a dilution of 1/350. A prediluted HRP  
polymer for rabbit IgG was used as the secondary and the sample  
was counter stained with hematoxylin. PBS was used instead of the  
primary antibody as the negative control, and is shown in the inset.

Perform heat mediated antigen retrieval before commencing with  
IHC staining protocol.



Immunocytochemistry/ Immunofluorescence - Anti-alpha Tubulin antibody [EPR13478(B)] - Loading Control (ab176560)

Immunofluorescent staining of A431 cells fixed in 4% PFA with purified ab176560 at a dilution of 1/350. An Alexa Fluor® 555 goat anti-rabbit was used as the secondary at a dilution of 1/500 and the sample was counter stained with DAPI. An Alexa Fluor® 555 goat anti-mouse was used at a dilution of 1/500 as the negative control and is shown in the bottom right hand panel.



Western blot - Anti-alpha Tubulin antibody [EPR13478(B)] - Loading Control (ab176560)

**All lanes :** Anti-alpha Tubulin antibody [EPR13478(B)] - Loading Control (ab176560) at 1/1000 dilution (Unpurified)

**Lane 1 :** HeLa cell lysate

**Lane 2 :** Jurkat cell lysate

**Lane 3 :** A431 cell lysate

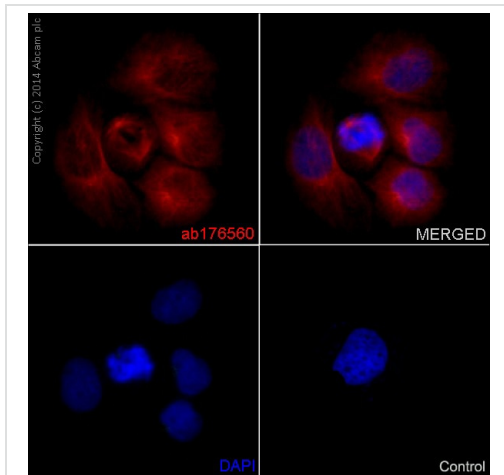
**Lane 4 :** K562 cell lysate

Lysates/proteins at 10 µg per lane.

Developed using the ECL technique.

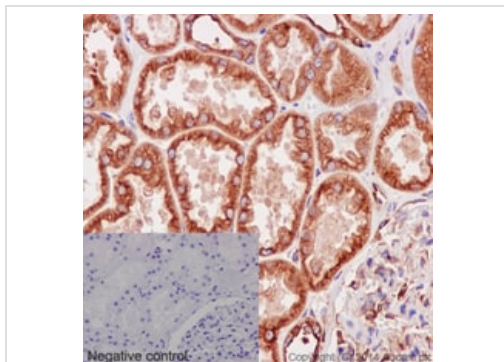
**Predicted band size:** 50 kDa

Secondary antibodies - anti-rabbit HRP (ab6721)



Immunocytochemistry/ Immunofluorescence - Anti-alpha Tubulin antibody [EPR13478(B)] - Loading Control (ab176560)

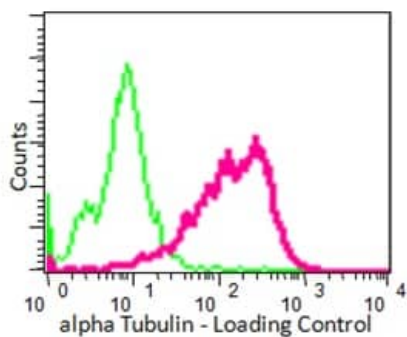
Immunofluorescent staining of A431 cells fixed in 4% PFA with unpurified ab176560 at a dilution of 1/100. An Alexa Fluor® 555 goat anti-rabbit was used as the secondary at a dilution of 1/500 and the sample was counter stained with DAPI. An Alexa Fluor® 555 goat anti-mouse was used at a dilution of 1/500 as the negative control and is shown in the bottom right hand panel.



Immunohistochemistry (Formalin/PFA-fixed paraffin-embedded sections) - Anti-alpha Tubulin antibody [EPR13478(B)] - Loading Control (ab176560)

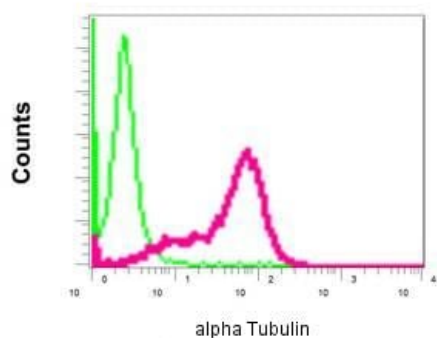
Immunohistochemical staining of paraffin embedded human kidney with unpurified ab176560 at a dilution of 1/100. A prediluted HRP polymer for rabbit IgG was used as the secondary and the sample was counter stained with hematoxylin. PBS was used instead of the primary antibody as the negative control, and is shown in the inset.

Perform heat mediated antigen retrieval before commencing with IHC staining protocol.



Intracellular Flow Cytometry analysis of permeabilized HeLa cells labeling alpha Tubulin (pink) with purified ab176560 at a 1/70 dilution, or negative control rabbit IgG (green). The secondary antibody was FITC goat anti-rabbit.

Flow Cytometry (Intracellular) - Anti-alpha Tubulin antibody [EPR13478(B)] - Loading Control (ab176560)



Intracellular Flow Cytometry analysis of permeabilized Jurkat cells labeling alpha Tubulin (red) with unpurified ab176560 at a 1/10 dilution, or negative control rabbit IgG (green)

Flow Cytometry (Intracellular) - Anti-alpha Tubulin antibody [EPR13478(B)] - Loading Control (ab176560)

### Why choose a recombinant antibody?



**Research with confidence**  
Consistent and reproducible results



**Long-term and scalable supply**  
Recombinant technology



**Success from the first experiment**  
Confirmed specificity



**Ethical standards compliant**  
Animal-free production

Anti-alpha Tubulin antibody [EPR13478(B)] - Loading  
Control (ab176560)

**Please note:** All products are "FOR RESEARCH USE ONLY. NOT FOR USE IN DIAGNOSTIC PROCEDURES"

### Our Abpromise to you: Quality guaranteed and expert technical support

---

- Replacement or refund for products not performing as stated on the datasheet
- Valid for 12 months from date of delivery
- Response to your inquiry within 24 hours
- We provide support in Chinese, English, French, German, Japanese and Spanish
- Extensive multi-media technical resources to help you
- We investigate all quality concerns to ensure our products perform to the highest standards

If the product does not perform as described on this datasheet, we will offer a refund or replacement. For full details of the Abpromise, please visit <https://www.abcam.co.jp/abpromise> or contact our technical team.

### Terms and conditions

---

- Guarantee only valid for products bought direct from Abcam or one of our authorized distributors