

Anti-Alpha-synuclein antibody [4D6] - BSA and Azide free ab1903

★★★★☆ [4 Abreviews](#) [70 References](#) [画像数 2](#)

製品の概要

製品名	Anti-Alpha-synuclein antibody [4D6] - BSA and Azide free
製品の詳細	Mouse monoclonal [4D6] to Alpha-synuclein - BSA and Azide free
由来種	Mouse
アプリケーション	適用あり: WB, IHC-P 適用なし: Flow Cyt or ICC
種交差性	交差種: Human
免疫原	Recombinant full length protein corresponding to Human Alpha-synuclein.
特記事項	<p>The Life Science industry has been in the grips of a reproducibility crisis for a number of years. Abcam is leading the way in addressing this with our range of recombinant monoclonal antibodies and knockout edited cell lines for gold-standard validation. Please check that this product meets your needs before purchasing.</p> <p>If you have any questions, special requirements or concerns, please send us an inquiry and/or contact our Support team ahead of purchase. Recommended alternatives for this product can be found below, along with publications, customer reviews and Q&As</p>

製品の特性

製品の状態	Liquid
保存方法	Shipped at 4°C. Upon delivery aliquot and store at -20°C or -80°C. Avoid repeated freeze / thaw cycles.
バッファー	Constituent: PBS
キャリア・フリー	はい
精製度	Protein A purified
特記事項 (精製)	Ammonium sulfate precipitated and dialyzed tissue culture supernatant.
ポリ/モノ	モノクローナル
クローン名	4D6
アイソタイプ	IgG1

アプリケーション

The Abpromise guarantee Abpromise保証は、 次のテスト済みアプリケーションにおけるab1903の使用に適用されます
アプリケーションノートには、推奨の開始希釈率がありますが、適切な希釈率につきましてはご検討ください。

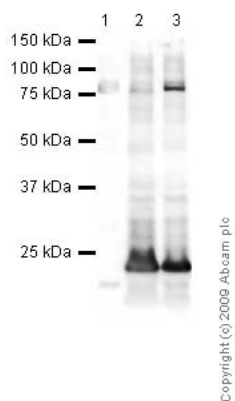
アプリケーション	Abreviews	特記事項
WB	★★★★☆ (3)	1/100 - 1/10000. Predicted molecular weight: 16 kDa.
IHC-P	★★★★☆ (1)	1/100 - 1/1000. Antigen retrieval is not essential but may optimise staining.

追加情報 Is unsuitable for Flow Cyt or ICC.

ターゲット情報

機能	May be involved in the regulation of dopamine release and transport. Induces fibrillization of microtubule-associated protein tau. Reduces neuronal responsiveness to various apoptotic stimuli, leading to a decreased caspase-3 activation.
組織特異性	Expressed principally in brain but is also expressed in low concentrations in all tissues examined except in liver. Concentrated in presynaptic nerve terminals.
関連疾患	Genetic alterations of SNCA resulting in aberrant polymerization into fibrils, are associated with several neurodegenerative diseases (synucleinopathies). SNCA fibrillar aggregates represent the major non A-beta component of Alzheimer disease amyloid plaque, and a major component of Lewy body inclusions. They are also found within Lewy body (LB)-like intraneuronal inclusions, glial inclusions and axonal spheroids in neurodegeneration with brain iron accumulation type 1. Parkinson disease 1 Parkinson disease 4 Dementia Lewy body
配列類似性	Belongs to the synuclein family.
ドメイン	The 'non A-beta component of Alzheimer disease amyloid plaque' domain (NAC domain) is involved in fibrils formation. The middle hydrophobic region forms the core of the filaments. The C-terminus may regulate aggregation and determine the diameter of the filaments.
翻訳後修飾	Phosphorylated, predominantly on serine residues. Phosphorylation by CK1 appears to occur on residues distinct from the residue phosphorylated by other kinases. Phosphorylation of Ser-129 is selective and extensive in synucleinopathy lesions. In vitro, phosphorylation at Ser-129 promoted insoluble fibril formation. Phosphorylated on Tyr-125 by a PTK2B-dependent pathway upon osmotic stress. Hallmark lesions of neurodegenerative synucleinopathies contain alpha-synuclein that is modified by nitration of tyrosine residues and possibly by dityrosine cross-linking to generated stable oligomers. Ubiquitinated. The predominant conjugate is the diubiquitinated form. Acetylation at Met-1 seems to be important for proper folding and native oligomeric structure.
細胞内局在	Cytoplasm, cytosol. Membrane. Nucleus. Cell junction, synapse. Secreted. Membrane-bound in dopaminergic neurons.

画像



Western blot - Anti-Alpha-synuclein antibody [4D6] - BSA and Azide free (ab1903)

All lanes : Anti-Alpha-synuclein antibody [4D6] - BSA and Azide free (ab1903) at 5 µg/ml

Lane 1 : A549 (Human lung adenocarcinoma epithelial cell line) Whole Cell Lysate

Lane 2 : SK N BE (Human neuroblastoma) Whole Cell Lysate

Lane 3 : SK N SH (Human neuroblastoma) Whole Cell Lysate

Lysates/proteins at 10 µg per lane.

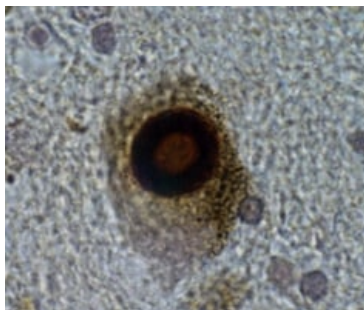
Secondary

All lanes : Goat polyclonal to Mouse IgG - H&L - Pre-Adsorbed (HRP) at 1/3000 dilution

Predicted band size: 16 kDa

Observed band size: 16 kDa

Additional bands at: 18 kDa (possible post-translational modification), 80 kDa (possible post-translational modification)



Immunohistochemistry (Formalin/PFA-fixed paraffin-embedded sections) - Anti-Alpha-synuclein antibody [4D6] - BSA and Azide free (ab1903)

IHC-P using ab1903 showing lewy bodies in a human substantia nigra neuron(x400)

Please note: All products are "FOR RESEARCH USE ONLY. NOT FOR USE IN DIAGNOSTIC PROCEDURES"

Our Abpromise to you: Quality guaranteed and expert technical support

- Replacement or refund for products not performing as stated on the datasheet
- Valid for 12 months from date of delivery
- Response to your inquiry within 24 hours
- We provide support in Chinese, English, French, German, Japanese and Spanish

- Extensive multi-media technical resources to help you
- We investigate all quality concerns to ensure our products perform to the highest standards

If the product does not perform as described on this datasheet, we will offer a refund or replacement. For full details of the Abpromise, please visit <https://www.abcam.co.jp/abpromise> or contact our technical team.

Terms and conditions

- Guarantee only valid for products bought direct from Abcam or one of our authorized distributors