

Anti-alpha Lactalbumin antibody [F20.16] ab20212

1 References [画像数 1](#)

製品の概要

製品名	Anti-alpha Lactalbumin antibody [F20.16]
製品の詳細	Mouse monoclonal [F20.16] to alpha Lactalbumin
由来種	Mouse
アプリケーション	適用あり: ICC/IF
種交差性	交差種: Human
免疫原	Purified Alpha Lactalbumin

特記事項

This antibody can be used as an in vitro marker of terminally differentiated breast luminal epithelial cells.

The Life Science industry has been in the grips of a reproducibility crisis for a number of years. Abcam is leading the way in addressing this with our range of recombinant monoclonal antibodies and knockout edited cell lines for gold-standard validation. Please check that this product meets your needs before purchasing.

If you have any questions, special requirements or concerns, please send us an inquiry and/or contact our Support team ahead of purchase. Recommended alternatives for this product can be found below, along with publications, customer reviews and Q&As

製品の特性

製品の状態	Liquid
保存方法	Shipped at 4°C. Store at +4°C short term (1-2 weeks). Upon delivery aliquot. Store at -20°C or -80°C. Avoid freeze / thaw cycle.
バッファー	Preservative: 0.02% Sodium azide Constituent: 99.98% PBS
精製度	Purified IgM
特記事項 (精製)	This antibody was purified using affinity chromatography. The sample was eluted using a commercially bought Neutral Elution Buffer and exchanged into PBS using a G25 column.
一次抗体 備考	This antibody can be used as an in vitro marker of terminally differentiated breast luminal epithelial cells.
ポリ/モノ	モノクローナル

クローン名	F20.16
ミエローマ	x63-Ag8.653
アイソタイプ	IgM
軽鎖の種類	unknown

アプリケーション

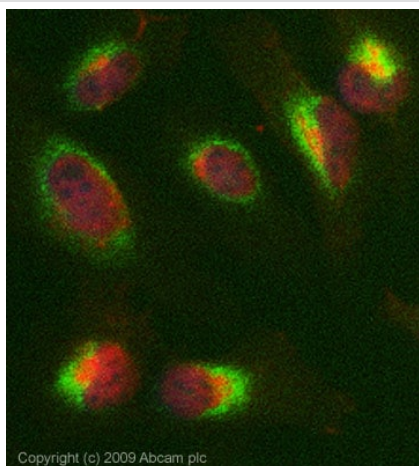
The Abpromise guarantee Abpromise保証は、次のテスト済みアプリケーションにおけるab20212の使用に適用されます
アプリケーションノートには、推奨の開始希釈率がありますが、適切な希釈率につきましてはご確認ください。

アプリケーション	Abreviews	特記事項
ICC/IF		Use a concentration of 1 µg/ml.

ターゲット情報

機能	Regulatory subunit of lactose synthase, changes the substrate specificity of galactosyltransferase in the mammary gland making glucose a good acceptor substrate for this enzyme. This enables LS to synthesize lactose, the major carbohydrate component of milk. In other tissues, galactosyltransferase transfers galactose onto the N-acetylglucosamine of the oligosaccharide chains in glycoproteins.
組織特異性	Mammary gland specific. Secreted in milk.
配列類似性	Belongs to the glycosyl hydrolase 22 family.
細胞内局在	Secreted.

画像



ICC/IF image of ab20212 stained HeLa cells. The cells were 4% PFA fixed (10 min) and then incubated in 1%BSA / 10% normal Goat serum / 0.3M glycine in 0.1% PBS-Tween for 1h to permeabilise the cells and block non-specific protein-protein interactions. The cells were then incubated with the antibody (ab20212, 1µg/ml) overnight at +4°C. The secondary antibody (green) was Alexa Fluor® 488 Goat anti-Mouse IgG (H+L) used at a 1/1000 dilution for 1h. Alexa Fluor® 594 WGA was used to label plasma membranes (red) at a 1/200 dilution for 1h. DAPI was used to stain the cell nuclei (blue) at a concentration of 1.43µM.

Immunocytochemistry/ Immunofluorescence - Anti-alpha Lactalbumin antibody [F20.16] (ab20212)

Please note: All products are "FOR RESEARCH USE ONLY. NOT FOR USE IN DIAGNOSTIC PROCEDURES"

Our Abpromise to you: Quality guaranteed and expert technical support

- Replacement or refund for products not performing as stated on the datasheet
- Valid for 12 months from date of delivery
- Response to your inquiry within 24 hours

- We provide support in Chinese, English, French, German, Japanese and Spanish
- Extensive multi-media technical resources to help you
- We investigate all quality concerns to ensure our products perform to the highest standards

If the product does not perform as described on this datasheet, we will offer a refund or replacement. For full details of the Abpromise, please visit <https://www.abcam.co.jp/abpromise> or contact our technical team.

Terms and conditions

- Guarantee only valid for products bought direct from Abcam or one of our authorized distributors