


Anti-alpha Internexin antibody ab7259

★ ★ ★ ★ ★ 2 Abreviews 7 References 画像数 5

医薬用外劇物

製品の概要

製品名	Anti-alpha Internexin antibody
製品の詳細	Rabbit polyclonal to alpha Internexin
由来種	Rabbit
特異性	Specifically recognizes a-internexin.
アプリケーション	適用あり: WB, IHC-FoFr, IHC-P, ICC/IF
種交差性	交差種: Mouse, Rat, Cow, Human 交差が予測される動物種: Mammals 
免疫原	Recombinant full length protein (Rat)
特記事項	<p>The Life Science industry has been in the grips of a reproducibility crisis for a number of years. Abcam is leading the way in addressing this with our range of recombinant monoclonal antibodies and knockout edited cell lines for gold-standard validation. Please check that this product meets your needs before purchasing.</p> <p>If you have any questions, special requirements or concerns, please send us an inquiry and/or contact our Support team ahead of purchase. Recommended alternatives for this product can be found below, along with publications, customer reviews and Q&As</p>

製品の特性

製品の状態	Liquid
保存方法	Shipped at 4°C. Store at +4°C short term (1-2 weeks). Upon delivery aliquot. Store at -20°C or -80°C. Avoid freeze / thaw cycle.
バッファー	pH: 7.60 Preservatives: 0.01% Thimerosal (merthiolate), 0.05% Sodium azide Constituents: 0.164% Sodium phosphate, 1.45% Sodium chloride, 1.5% BSA
精製度	Whole antiserum
ポリ/モノ	ポリクローナル
アイソタイプ	IgG

アプリケーション

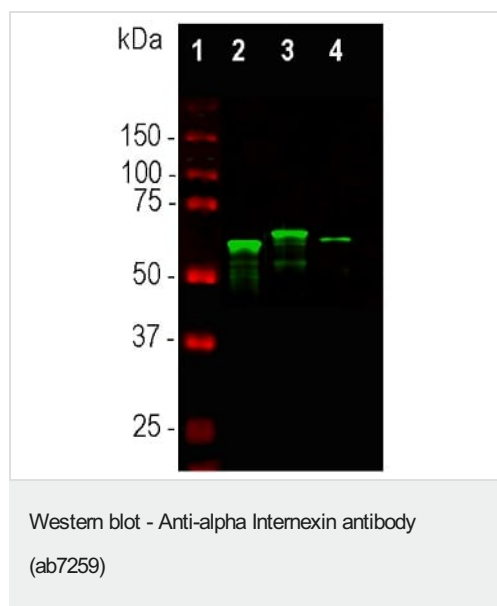
The Abpromise guarantee **Abpromise保証は、次のテスト済みアプリケーションにおけるab7259の使用に適用されず**
アプリケーションノートには、推奨の開始希釈率がありますが、適切な希釈率につきましてはご検討ください。

アプリケーション	Abreviews	特記事項
WB	★★★★☆ (1)	1/10000 - 1/20000. Predicted molecular weight: 66 kDa.
IHC-FoFr		1/500 - 1/1000.
IHC-P		1/2000.
ICC/IF		1/500 - 1/1000.

ターゲット情報

機能	Class-IV neuronal intermediate filament that is able to self-assemble. It is involved in the morphogenesis of neurons. It may form an independent structural network without the involvement of other neurofilaments or it may cooperate with NF-L to form the filamentous backbone to which NF-M and NF-H attach to form the cross-bridges.
組織特異性	Found predominantly in adult CNS.
配列類似性	Belongs to the intermediate filament family.
発生段階	Expressed in brain as early as the 16th week of gestation, and increased rapidly and reached a steady state level by the 18th week of gestation.
翻訳後修飾	O-glycosylated. Phosphorylated upon DNA damage, probably by ATM or ATR.

画像



All lanes : Anti-alpha Internexin antibody (ab7259) at 1/10000 dilution

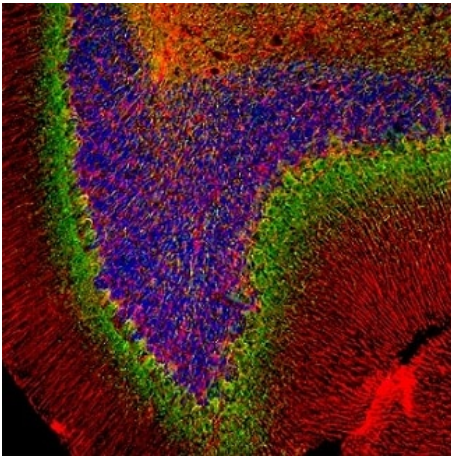
Lane 1 : Protein standard

Lane 2 : Mouse spinal cord lysate

Lane 3 : Rat spinal cord lysate

Lane 4 : Cow spinal cord lysate

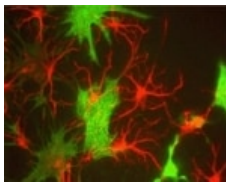
Predicted band size: 66 kDa



Immunohistochemistry (PFA perfusion fixed frozen sections) - Anti-alpha Internexin antibody (ab7259)

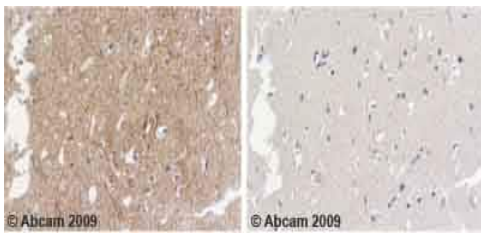
Immunofluorescence analysis of rat cerebellum section stained for alpha Internexin using ab7259 at a 1/2000 dilution (green) co-stained with chicken polyclonal antibody to GFAP at a 1/5000 dilution (red). DAPI was used to stain nuclear DNA (blue).

Following transcardial perfusion with 4% paraformaldehyde, brain was post-fixed for 24 hours, cut to 45 μ M, and free-floating sections were stained.



Immunocytochemistry/ Immunofluorescence - Anti-alpha Internexin antibody (ab7259)

Ab7259 shows red, neuronal progenitor cells, plectin (not one of our antibodies) shows fibroblast marker. Photo courtesy of: Dr. Gerry Shaw University of Florida

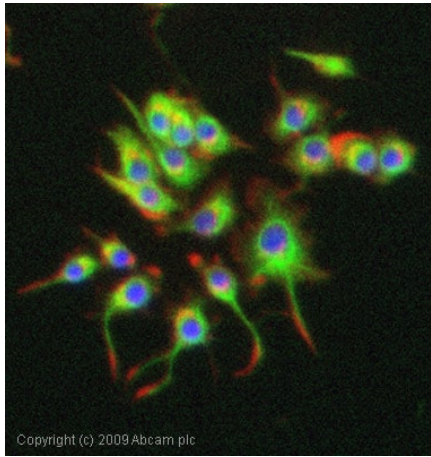


Immunohistochemistry (Formalin/PFA-fixed paraffin-embedded sections) - Anti-alpha Internexin antibody (ab7259)

Ab7259 staining Human normal temporal cortex. Staining is localised to intracellular compartment.

Left panel: with primary antibody diluted 1:2000. Right panel: isotype control.

Sections were stained using an automated system DAKO Autostainer Plus, at room temperature: sections were rehydrated and antigen retrieved with the Dako 3 in 1 AR buffer citrate pH6.1 in a DAKO PT Link. Slides were peroxidase blocked in 3% H₂O₂ in methanol for 10 mins. They were then blocked with Dako Protein block for 10 minutes (containing casein 0.25% in PBS) then incubated with primary antibody for 20 min and detected with Dako envision flex amplification kit for 30 minutes. Colorimetric detection was completed with Diaminobenzidine for 5 minutes. Slides were counterstained with Haematoxylin and coverslipped under DePeX. Please note that for manual staining we recommend to optimize the primary antibody concentration and incubation time (overnight incubation), and amplification may be required.



Immunocytochemistry/ Immunofluorescence - Anti-alpha Interneixin antibody (ab7259)

ICC/IF image of ab7259 stained PC12 cells. The cells were 100% methanol fixed (5 min) and then incubated in 1%BSA / 10% normal goat serum / 0.3M glycine in 0.1% PBS-Tween for 1h to permeabilise the cells and block non-specific protein-protein interactions. The cells were then incubated with the antibody (ab7259, 1/1000 dilution) overnight at +4°C. The secondary antibody (green) was Alexa Fluor® 488 goat anti-rabbit IgG (H+L) used at a 1/1000 dilution for 1h. Alexa Fluor® 594 WGA was used to label plasma membranes (red) at a 1/200 dilution for 1h. DAPI was used to stain the cell nuclei (blue) at a concentration of 1.43µM.

Please note: All products are "FOR RESEARCH USE ONLY. NOT FOR USE IN DIAGNOSTIC PROCEDURES"

Our Abpromise to you: Quality guaranteed and expert technical support

- Replacement or refund for products not performing as stated on the datasheet
- Valid for 12 months from date of delivery
- Response to your inquiry within 24 hours
- We provide support in Chinese, English, French, German, Japanese and Spanish
- Extensive multi-media technical resources to help you
- We investigate all quality concerns to ensure our products perform to the highest standards

If the product does not perform as described on this datasheet, we will offer a refund or replacement. For full details of the Abpromise, please visit <https://www.abcam.co.jp/abpromise> or contact our technical team.

Terms and conditions

- Guarantee only valid for products bought direct from Abcam or one of our authorized distributors