




Anti-Alpha B Crystallin (phospho S59) antibody ab5577

★★★★★ [3 Abreviews](#) [11 References](#) [画像数 1](#)

製品の概要

製品名	Anti-Alpha B Crystallin (phospho S59) antibody
製品の詳細	Rabbit polyclonal to Alpha B Crystallin (phospho S59)
由来種	Rabbit
アプリケーション	適用あり: WB
種交差性	交差種: Human 交差が予測される動物種: Sheep, Rabbit, Hamster, Pig, Cynomolgus monkey 
免疫原	Synthetic peptide corresponding to Human Alpha B Crystallin aa 54-64 (phospho S59). Sequence: FLRAPSWIDTG <div>  Run BLAST with  Run BLAST with </div>
特記事項	<p>The Life Science industry has been in the grips of a reproducibility crisis for a number of years. Abcam is leading the way in addressing this with our range of recombinant monoclonal antibodies and knockout edited cell lines for gold-standard validation. Please check that this product meets your needs before purchasing.</p> <p>If you have any questions, special requirements or concerns, please send us an inquiry and/or contact our Support team ahead of purchase. Recommended alternatives for this product can be found below, along with publications, customer reviews and Q&As</p>

製品の特性

製品の状態	Liquid
保存方法	Shipped at 4°C. Store at +4°C short term (1-2 weeks). Upon delivery aliquot. Store at -20°C or -80°C. Avoid freeze / thaw cycle.
バッファー	Preservative: 0.05% Sodium azide Constituents: PBS, 3% BSA
精製度	Immunogen affinity purified
ポリ/モノ	ポリクローナル
アイソタイプ	IgG

アプリケーション

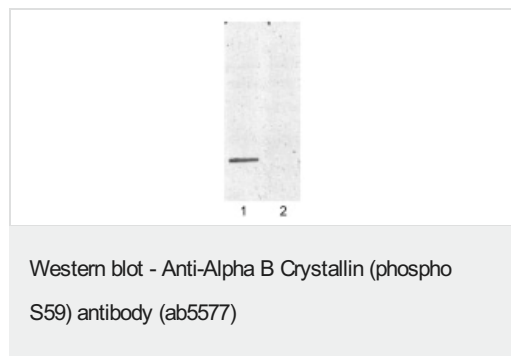
The Abpromise guarantee **Abpromise保証は、** 次のテスト済みアプリケーションにおけるab5577の使用に適用されます
アプリケーションノートには、推奨の開始希釈率がありますが、適切な希釈率につきましてはご検討ください。

アプリケーション	Abreviews	特記事項
WB		Use a concentration of 0.5 µg/ml. Detects a band of approximately 20 kDa.

ターゲット情報

機能	May contribute to the transparency and refractive index of the lens.
組織特異性	Lens as well as other tissues.
関連疾患	Defects in CRYAB are the cause of myofibrillar alpha-B crystallin-related (MFM-CRYAB) [MIM:608810]. A neuromuscular disorder that results in weakness of the proximal and distal limb muscles, weakness of the neck, velopharynx and trunk muscles, hypertrophic cardiomyopathy, and cataract in a subset of patients.
配列類似性	Belongs to the small heat shock protein (HSP20) family.
細胞内局在	Cytoplasm. Nucleus. Translocates to the nucleus during heat shock and resides in sub-nuclear structures known as SC35 speckles or nuclear splicing speckles.

画像



ab5577 at 0.5µg/ml concentration staining approximately 20 KDa Crystallin Alpha B in lane 1) phospho-alpha-B crystallin (Ser59) and lane 2) non phosphorylated alpha-B crystallin in U-251 MG (formally U-373 MG) (Human brain glioma cell line) whole cell lysate.

Please note: All products are "FOR RESEARCH USE ONLY. NOT FOR USE IN DIAGNOSTIC PROCEDURES"

Our Abpromise to you: Quality guaranteed and expert technical support

- Replacement or refund for products not performing as stated on the datasheet
- Valid for 12 months from date of delivery
- Response to your inquiry within 24 hours
- We provide support in Chinese, English, French, German, Japanese and Spanish
- Extensive multi-media technical resources to help you
- We investigate all quality concerns to ensure our products perform to the highest standards

If the product does not perform as described on this datasheet, we will offer a refund or replacement. For full details of the Abpromise, please visit <https://www.abcam.co.jp/abpromise> or contact our technical team.

Terms and conditions

- Guarantee only valid for products bought direct from Abcam or one of our authorized distributors