

### Anti-Alpha B Crystallin antibody [EPR2752] ab76467

リコンビナント **RabMAb**

★★★★★ **2 Abreviews** **5 References** 画像数 12

#### 製品の概要

製品名	Anti-Alpha B Crystallin antibody [EPR2752]
製品の詳細	Rabbit monoclonal [EPR2752] to Alpha B Crystallin
由来種	Rabbit
アプリケーション	<b>適用あり:</b> WB, IHC-P, ICC/IF, IP <b>適用なし:</b> Flow Cyt
種交差性	<b>交差種:</b> Rat, Human
免疫原	Synthetic peptide within Human Alpha B Crystallin (C terminal). The exact sequence is proprietary.
ポジティブ・コントロール	Fetal heart and rat eyeball lysates; human heart muscle tissue.
特記事項	<p>This product is a recombinant monoclonal antibody, which offers several advantages including:</p> <ul style="list-style-type: none"> <li>- High batch-to-batch consistency and reproducibility</li> <li>- Improved sensitivity and specificity</li> <li>- Long-term security of supply</li> <li>- Animal-free production</li> </ul> <p>For more information <a href="#">see here</a>.</p> <p>Our RabMAb<sup>®</sup> technology is a patented hybridoma-based technology for making rabbit monoclonal antibodies. For details on our patents, please refer to <a href="#">RabMAb<sup>®</sup> patents</a>.</p> <p>Mouse: We have preliminary internal testing data to indicate this antibody may not react with this species. Please contact us for more information.</p>

#### 製品の特性

製品の状態	Liquid
保存方法	Shipped at 4°C. Upon delivery aliquot and store at -20°C. Avoid repeated freeze / thaw cycles.
バッファー	pH: 7.20 Preservative: 0.01% Sodium azide Constituents: 59% PBS, 40% Glycerol (glycerin, glycerine), 0.05% BSA
精製度	Protein A purified
ポリ/モノ	モノクローナル

クローン名EPR2752

アイソタイプIgG

アプリケーション

The Abpromise guarantee

Abpromise保証は、次のテスト済みアプリケーションにおけるab76467の使用に適用されます  
アプリケーションノートには、推奨の開始希釈率がありますが、適切な希釈率につきましてはご検討ください。

アプリケーション	Abreviews	特記事項
WB	★★★★★ (1)	1/1000 - 1/2000. Predicted molecular weight: 20 kDa.
IHC-P	★★★★★ (1)	1/250. Perform heat mediated antigen retrieval before commencing with IHC staining protocol. See <b>IHC antigen retrieval protocols</b> .
ICC/IF		1/250.
IP		1/250.

追加情報

Is unsuitable for Flow Cyt.

ターゲット情報

機能

May contribute to the transparency and refractive index of the lens.

組織特異性

Lens as well as other tissues.

関連疾患

Defects in CRYAB are the cause of myofibrillar alpha-B crystallin-related (MFM-CRYAB) [MIM:608810]. A neuromuscular disorder that results in weakness of the proximal and distal limb muscles, weakness of the neck, velopharynx and trunk muscles, hypertrophic cardiomyopathy, and cataract in a subset of patients.

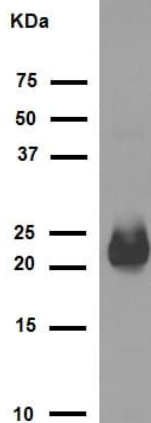
配列類似性

Belongs to the small heat shock protein (HSP20) family.

細胞内局在

Cytoplasm. Nucleus. Translocates to the nucleus during heat shock and resides in sub-nuclear structures known as SC35 speckles or nuclear splicing speckles.

画像



Western blot - Anti-Alpha B Crystallin antibody [EPR2752] (ab76467)

Anti-Alpha B Crystallin antibody [EPR2752] (ab76467) at 1/1000 dilution (purified) + Rat eyeball lysate at 10 µg

### Secondary

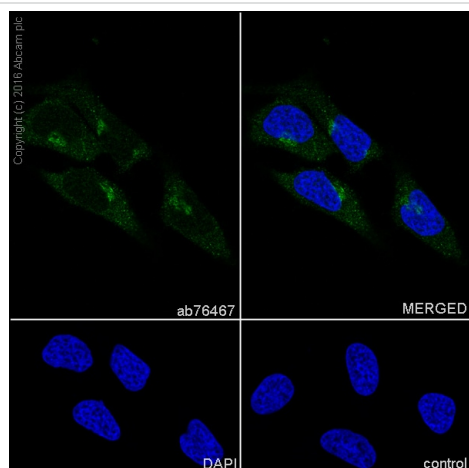
HRP goat anti-rabbit (H+L) at 1/1000 dilution

**Predicted band size:** 20 kDa

**Observed band size:** 22 kDa

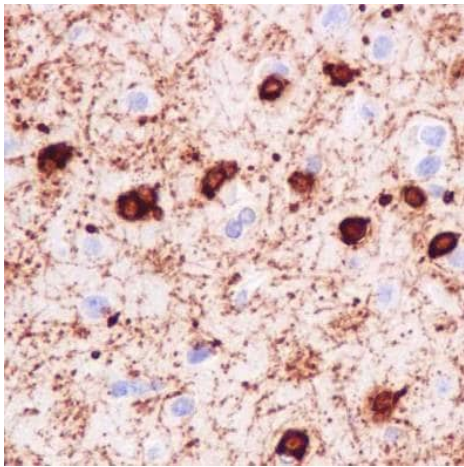
Blocking buffer: 5% NFDM/TBST

Dilution buffer: 5% NFDM/TBST



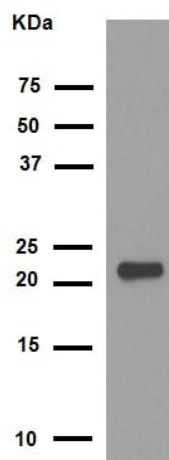
Immunocytochemistry/ Immunofluorescence - Anti-Alpha B Crystallin antibody [EPR2752] (ab76467)

Immunocytochemistry/Immunofluorescence analysis of HeLa (Human epithelial cell line from cervix adenocarcinoma) labelling Alpha B Crystallin with purified ab76467 at 1/250. Cells were fixed with 4% PFA and permeabilized with 0.1% triton X-100. **ab150077** Goat anti rabbit IgG (Alexa Fluor® 488) at 1/1000 was used as the secondary antibody. Nuclei were counterstained with DAPI. PBS was used instead of the primary antibody as the negative control.



Immunohistochemistry (Formalin/PFA-fixed paraffin-embedded sections) - Anti-Alpha B Crystallin antibody [EPR2752] (ab76467)

Immunohistochemical staining of paraffin embedded human brain with purified ab76467 at a working dilution of 1 in 250. The secondary antibody used is a HRP polymer for rabbit IgG. The sample is counter-stained with hematoxylin. Antigen retrieval was performed using Tris-EDTA buffer, pH 9.0.



Western blot - Anti-Alpha B Crystallin antibody [EPR2752] (ab76467)

Anti-Alpha B Crystallin antibody [EPR2752] (ab76467) at 1/1000 dilution (purified) + Human fetal heart tissue lysate at 10 µg/ml

#### Secondary

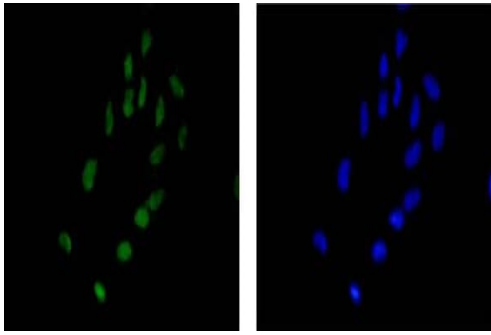
HRP goat anti-rabbit (H+L) at 1/1000 dilution

**Predicted band size:** 20 kDa

**Observed band size:** 22 kDa

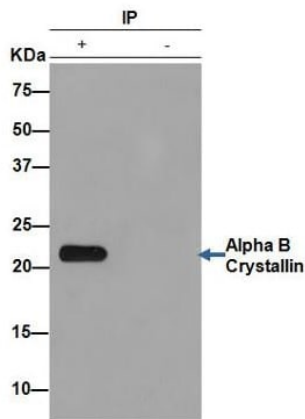
Blocking buffer: 5% NFDM/TBST

Dilution buffer: 5% NFDM/TBST



Immunocytochemistry/ Immunofluorescence - Anti-Alpha B Crystallin antibody [EPR2752] (ab76467)

Immunofluorescence staining of HeLa cells with purified ab76467 at a working dilution of 1 in 200, counter-stained with DAPI. The secondary antibody was Alexa Fluor® 488 goat anti rabbit, used at a dilution of 1 in 200. The cells were fixed in 4% PFA.

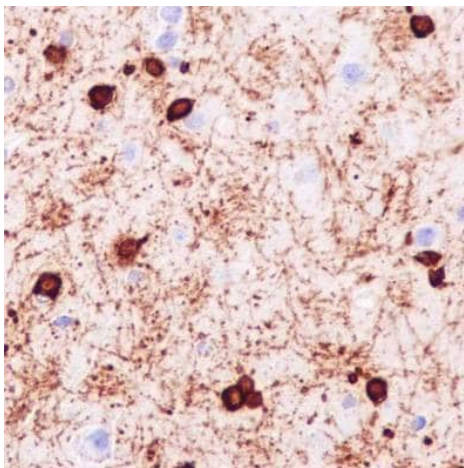


Western blot - Anti-Alpha B Crystallin antibody [EPR2752] (ab76467)

ab76467 (purified) at 1/250 immunoprecipitating alpha B crystallin in human fetal heart (Lane 1). Lane 2 - PBS. For western blotting, a HRP-conjugated anti-rabbit IgG, specific to the non-reduced form of IgG was used as the secondary antibody (1/1500).

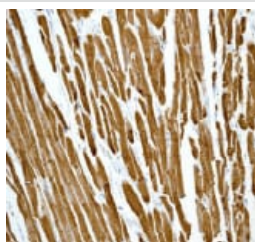
Blocking buffer and concentration: 5% NFDM/TBST.

Diluting buffer and concentration: 5% NFDM /TBST.



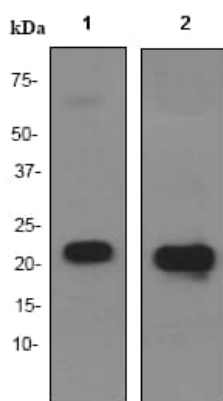
Immunohistochemistry (Formalin/PFA-fixed paraffin-embedded sections) - Anti-Alpha B Crystallin antibody [EPR2752] (ab76467)

Immunohistochemical staining of paraffin embedded human brain with unpurified ab76467 at a working dilution of 1 in 250. The secondary antibody used is a HRP polymer for rabbit IgG. The sample is counter-stained with hematoxylin. Antigen retrieval was performed using Tris-EDTA buffer, pH 9.0.



Immunohistochemistry (Formalin/PFA-fixed paraffin-embedded sections) - Anti-Alpha B Crystallin antibody [EPR2752] (ab76467)

Immunohistochemical staining of alpha B Crystallin in paraffin embedded human heart muscle with ab76467 at a 1/100 dilution. Perform heat mediated antigen retrieval before commencing with IHC staining protocol.



Western blot - Anti-Alpha B Crystallin antibody [EPR2752] (ab76467)

**Lane 1** : Anti-Alpha B Crystallin antibody [EPR2752] (ab76467) at 1/5000 dilution

**Lane 2** : Anti-Alpha B Crystallin antibody [EPR2752] (ab76467) at 1/20000 dilution

**Lane 1** : fetal heart lysate

**Lane 2** : rat eyeball lysate

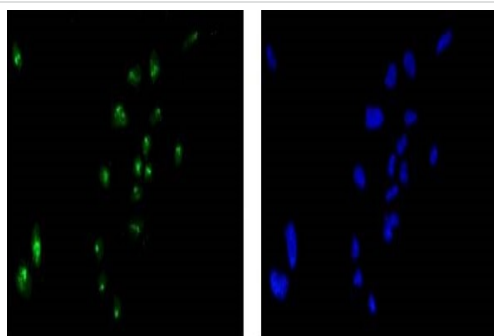
Lysates/proteins at 10 µg per lane.

#### Secondary

**All lanes** : goat anti-rabbit HRP at 1/2000 dilution

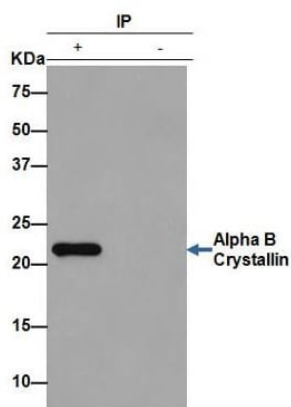
**Predicted band size:** 20 kDa

**Observed band size:** 20 kDa



Immunocytochemistry/ Immunofluorescence - Anti-Alpha B Crystallin antibody [EPR2752] (ab76467)

Immunofluorescence staining of HeLa cells with unpurified ab76467 at a working dilution of 1 in 200, counter-stained with DAPI. The secondary antibody was Alexa Fluor<sup>®</sup> 488 goat anti rabbit, used at a dilution of 1 in 200. The cells were fixed in 4% PFA.



Immunoprecipitation - Anti-Alpha B Crystallin antibody [EPR2752] (ab76467)

ab76467 (unpurified) at 1/250 immunoprecipitating alpha B crystallin in human fetal heart (Lane 1). Lane 2 - PBS. For western blotting, a HRP-conjugated anti-rabbit IgG, specific to the non-reduced form of IgG was used as the secondary antibody (1/1500).

Blocking buffer and concentration: 5% NFDM/TBST.

Diluting buffer and concentration: 5% NFDM /TBST.

#### Why choose a recombinant antibody?



**Research with confidence**  
Consistent and reproducible results



**Long-term and scalable supply**  
Recombinant technology



**Success from the first experiment**  
Confirmed specificity



**Ethical standards compliant**  
Animal-free production

Anti-Alpha B Crystallin antibody [EPR2752] (ab76467)

**Please note:** All products are "FOR RESEARCH USE ONLY. NOT FOR USE IN DIAGNOSTIC PROCEDURES"

#### Our Abpromise to you: Quality guaranteed and expert technical support

- Replacement or refund for products not performing as stated on the datasheet
- Valid for 12 months from date of delivery
- Response to your inquiry within 24 hours
- We provide support in Chinese, English, French, German, Japanese and Spanish
- Extensive multi-media technical resources to help you
- We investigate all quality concerns to ensure our products perform to the highest standards

If the product does not perform as described on this datasheet, we will offer a refund or replacement. For full details of the Abpromise, please visit <https://www.abcam.co.jp/abpromise> or contact our technical team.

#### **Terms and conditions**

---

- Guarantee only valid for products bought direct from Abcam or one of our authorized distributors