




Anti-Alpha B Crystallin antibody ab65940

画像数 1

製品の概要

製品名	Anti-Alpha B Crystallin antibody
製品の詳細	Goat polyclonal to Alpha B Crystallin
由来種	Goat
アプリケーション	適用あり: WB
種交差性	交差種: Mouse, Rat 交差が予測される動物種: Sheep, Rabbit, Chicken, Guinea pig, Hamster, Cow, Pig, Cynomolgus monkey, Orangutan 
免疫原	Synthetic peptide: RLEKDRFSVNLD , from the internal region of human alpha B Crystallin <div>  Run BLAST with  Run BLAST with </div>

特記事項

The Life Science industry has been in the grips of a reproducibility crisis for a number of years. Abcam is leading the way in addressing this with our range of recombinant monoclonal antibodies and knockout edited cell lines for gold-standard validation. Please check that this product meets your needs before purchasing.

If you have any questions, special requirements or concerns, please send us an inquiry and/or contact our Support team ahead of purchase. Recommended alternatives for this product can be found below, along with publications, customer reviews and Q&As

製品の特性

製品の状態	Liquid
保存方法	Shipped at 4°C. Store at -20°C. Stable for 12 months at -20°C.
バッファー	pH: 7.30 Preservative: 0.02% Sodium azide Constituents: Tris buffered saline, 0.5% BSA
精製度	Immunogen affinity purified
特記事項 (精製)	Purified from goat serum by ammonium sulphate precipitation followed by antigen affinity chromatography using the immunizing peptide.
ポリ/モノ	ポリクローナル
アイソタイプ	IgG

アプリケーション

The Abpromise guarantee

Abpromise保証は、次のテスト済みアプリケーションにおけるab65940の使用に適用されます

アプリケーションノートには、推奨の開始希釈率がありますが、適切な希釈率につきましてはご検討ください。

アプリケーション	Abreviews	特記事項
WB		Use a concentration of 0.03 - 0.1 µg/ml. Detects a band of approximately 18-19 kDa (predicted molecular weight: 20 kDa). A 1 hour primary incubation is recommended for this product. Approx 22kDa band observed in Mouse and Rat Eye lysates (calculated MW of 20.1kDa according to Mouse NP_034094.1 and Rat NP_037067.1).

ターゲット情報

機能

May contribute to the transparency and refractive index of the lens.

組織特異性

Lens as well as other tissues.

関連疾患

Defects in CRYAB are the cause of myofibrillar alpha-B crystallin-related (MFM-CRYAB) [MIM:608810]. A neuromuscular disorder that results in weakness of the proximal and distal limb muscles, weakness of the neck, velopharynx and trunk muscles, hypertrophic cardiomyopathy, and cataract in a subset of patients.

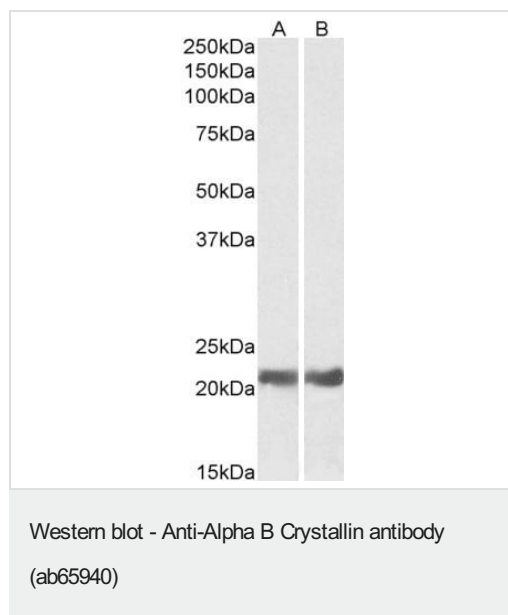
配列類似性

Belongs to the small heat shock protein (HSP20) family.

細胞内局在

Cytoplasm. Nucleus. Translocates to the nucleus during heat shock and resides in sub-nuclear structures known as SC35 speckles or nuclear splicing speckles.

画像



All lanes : Anti-Alpha B Crystallin antibody (ab65940) at 0.05 µg/ml

Lane 1 : Mouse eye lysate

Lane 2 : Rat eye lysate

Lysates/proteins at 35 µg per lane.

Predicted band size: 20 kDa

Please note: All products are "FOR RESEARCH USE ONLY. NOT FOR USE IN DIAGNOSTIC PROCEDURES"

Our Abpromise to you: Quality guaranteed and expert technical support

- Replacement or refund for products not performing as stated on the datasheet
- Valid for 12 months from date of delivery
- Response to your inquiry within 24 hours

- We provide support in Chinese, English, French, German, Japanese and Spanish
- Extensive multi-media technical resources to help you
- We investigate all quality concerns to ensure our products perform to the highest standards

If the product does not perform as described on this datasheet, we will offer a refund or replacement. For full details of the Abpromise, please visit <https://www.abcam.co.jp/abpromise> or contact our technical team.

Terms and conditions

- Guarantee only valid for products bought direct from Abcam or one of our authorized distributors